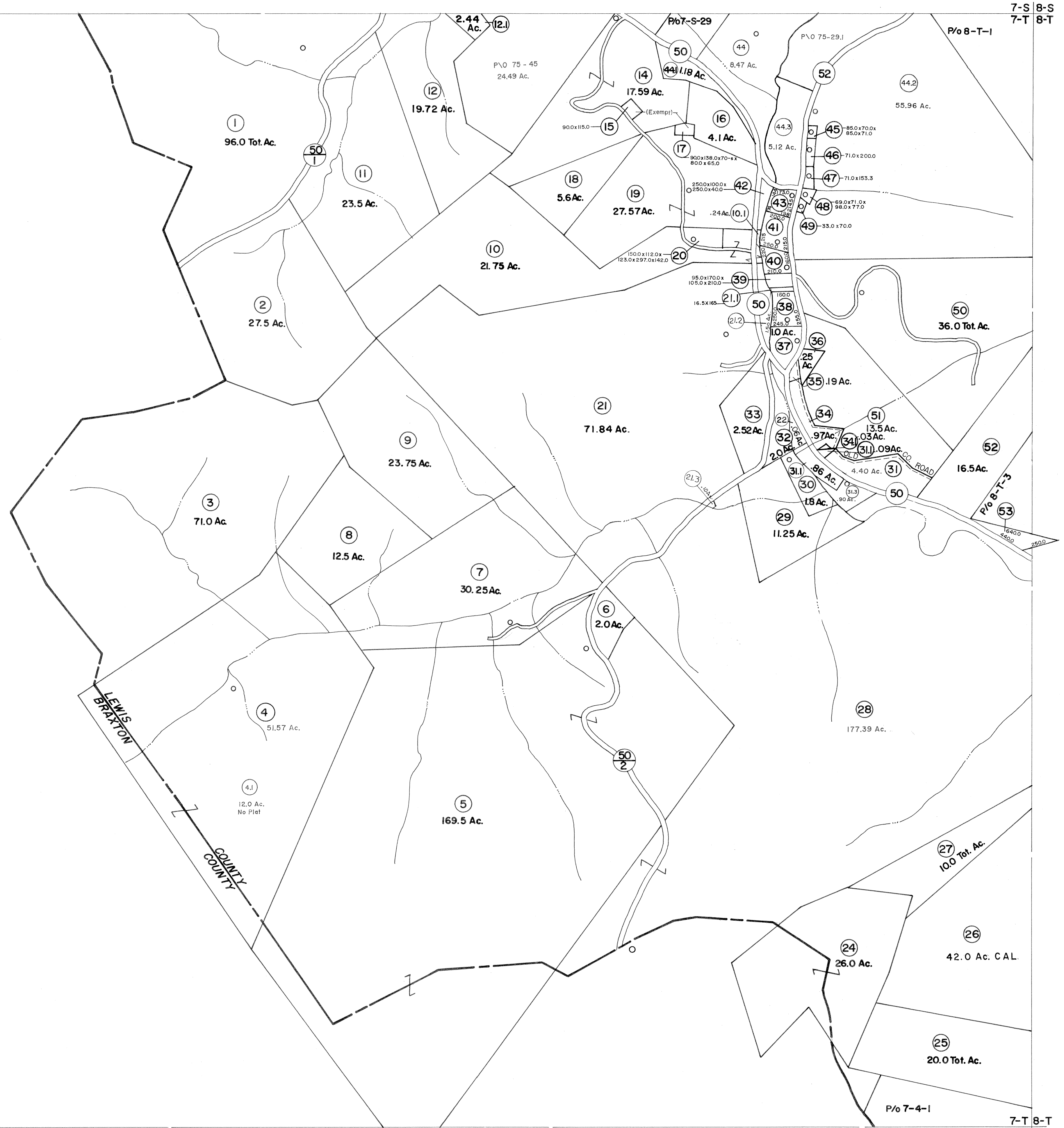


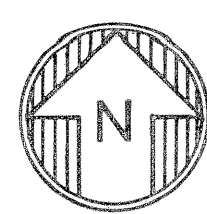
6-S 7-S
7-T

7-S 8-S
7-T 8-T



7-T
7-U

7-T 8-T
7-U 8-U



For Tax Purposes Only

Prepared by
VOGT, IVERS AND ASSOCIATES
 ENGINEERS-ARCHITECTS
 CHARLESTON, W.VA.
 CINCINNATI, OHIO

Property line ————
 Edge of pavement or roadway - - - - -
 Corporation line - - - - -
 District line - - - - -
 County line - - - - -

Original lot line - - - - -
 Deed lot number (15)
 Parcel or index number (29)
 Improvement o
 Railroad ————

Revisions			
1	3-74 PAM	9	REV. TO 1-1-90 NCS
2	Revised to 7-1-81 C.P.	10	O.G.I.S 4-1-96 J.E.B
3	To December 1983 C.P.	11	6-1-2000 J.E.B
4	To 7-1-84 C.P.	12	3-15-2003 JEB
5	Revised to 7-1-87 C.P.	13	5-1-05 J.E.B
6	Revised to 7-1-87 C.P.	14	5-1-06 J.E.B
7	REV. TO 1-1-89 NCS	15	4-1-07 J.E.B
8		16	

KEY MAP

6-S 7-S 8-S
 7-T 8-T
 7-U 8-U

LEWIS COUNTY

STATE OF WEST VIRGINIA

Office of Assessor

DISTRICT

COLLINS SETTLEMENT

SHEET NO: 7-T

Date, Aerial Photography: 4-25-62
 Photo No: LE-2-108

Date, Map: 10-19-64
 Scale: 1" = 400'