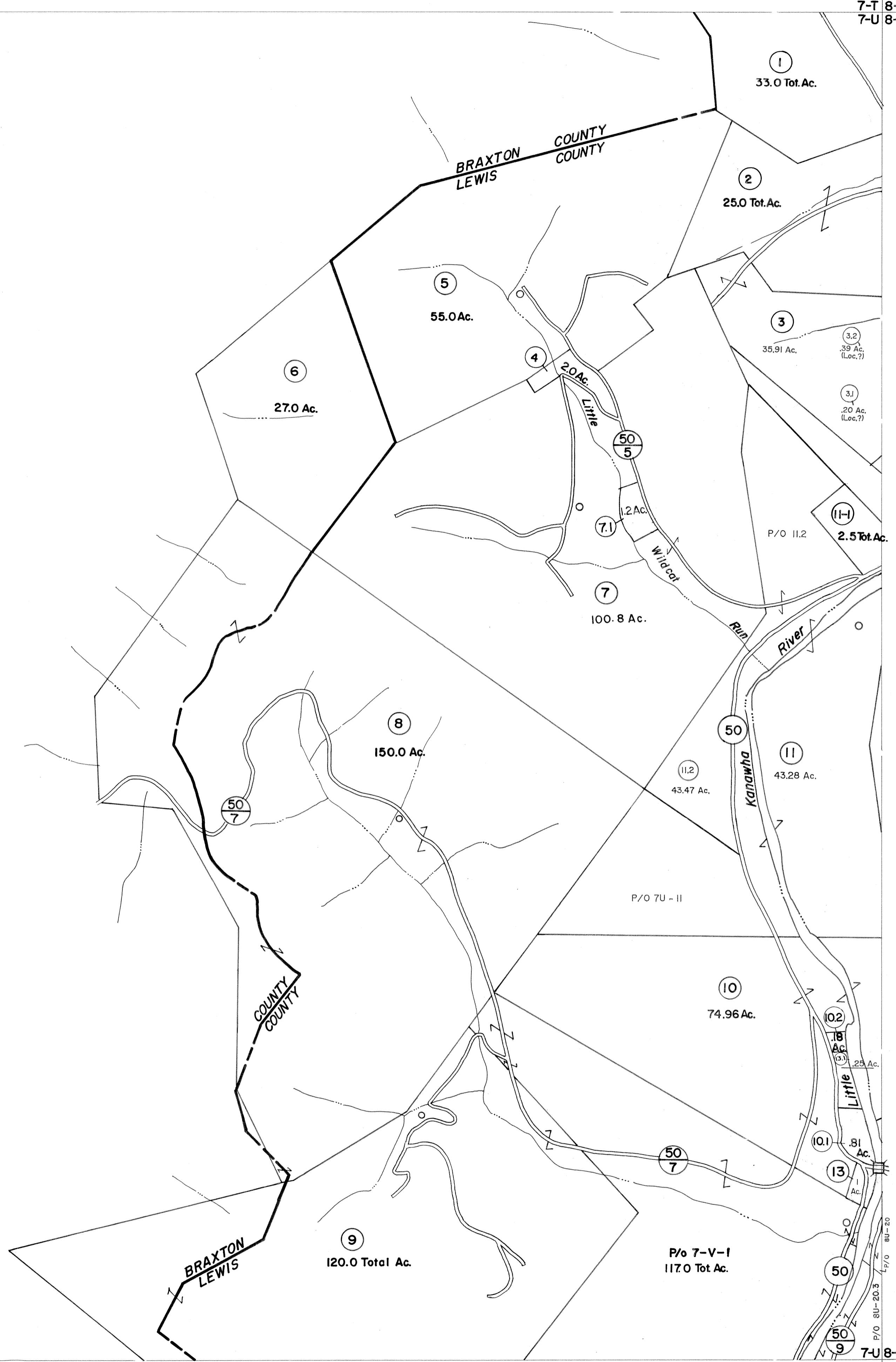


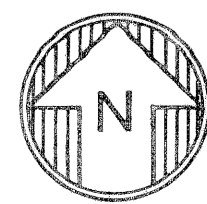
7-T  
7-U

7-T 8-T  
7-U 8-U



7-U  
7-V

7-U 8-U  
7-V 8-V



For Tax Purposes Only  
 Prepared by  
**VOGT, IVERS AND ASSOCIATES**  
 ENGINEERS-ARCHITECTS  
 CHARLESTON, W.VA  
 CINCINNATI, OHIO

Property line	—————	Original lot line	-----
Edge of pavement or roadway	———	Deed lot number	(15)
Corporation line	-----	Parcel or index number	⊙
District line	-----	Improvement	○
County line	-----	Railroad	—+—

Revisions			
1	PARCEL 11-1 ADDED	9	17
2	10-28-64	10	18
3	GOLDEN 3-74 PAM	11	19
4	Revised to 7-1-81 J.E.B.	12	20
5	To December 1983 C.P.	13	21
6	Revised to 7-1-81 J.E.B.	14	22
7	3-15-98 J.E.B.	15	23
8	5-1-06 J.E.B.	16	24

KEY MAP  
 7-T 8-T  
 7-U 8-U  
 7-V 8-V

**LEWIS COUNTY**  
 STATE OF WEST VIRGINIA  
 Office of Assessor

DISTRICT  
**COLLINS SETTLEMENT**  
 SHEET NO: 7-U  
 Date, Aerial Photography: 4-25-62  
 Photo No: LE-2-109  
 Date, Map: 5-18-64  
 Scale: 1"=400'