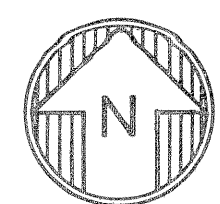
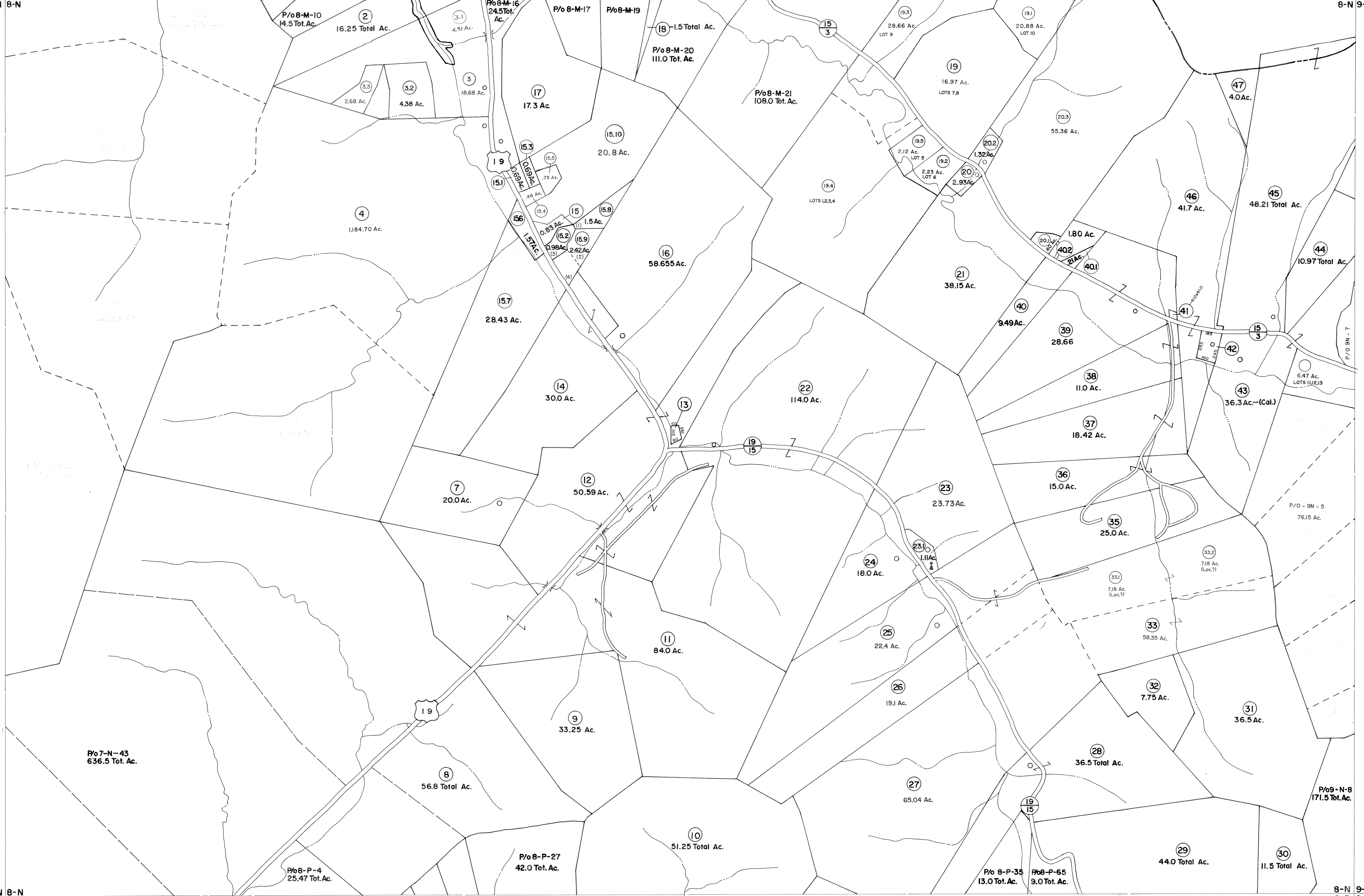


7-M 8-M
7-N 8-N

8-M 9-M
8-N 9-N

7-N 8-N
7-P 8-P

8-N 9-N
8-P 9-P



For Tax Purposes Only

Prepared by
VOGT, IVERS AND ASSOCIATES
 ENGINEERS-ARCHITECTS
 CHARLESTON, W.VA.
 CINCINNATI, OHIO

Property line	---	Original lot line	---
Edge of pavement or roadway	---	Deed lot number	(15)
Corporation line	---	Parcel or index number	(99)
District line	---	Improvement	o
County line	---	Railroad	o

Revisions	
1	ENOLDEN G 29 76 T G 9 4-1-07 J.E.B
2	REVISION TO 7-1-85 C.P.
3	16 December 1983 C.P.
4	To 7-1-84 C.P.
5	3-15-98 J.E.B
6	6-1-2000 J.E.B
7	4-15-2001 J.E.B
8	5-1-06 J.E.B

KEY MAP

7-M 8-M 9-M
 7-N 8-N 9-N
 7-P 8-P 9-P

LEWIS COUNTY
 STATE OF WEST VIRGINIA
 Office of Assessor

DISTRICT
COLLINS SETTLEMENT

SHEET NO: 8-N

Date, Aerial Photography: 4-25-62
 Photo No: LE-2-121

Date, Map: 11-2-64
 Scale: 1" = 400'