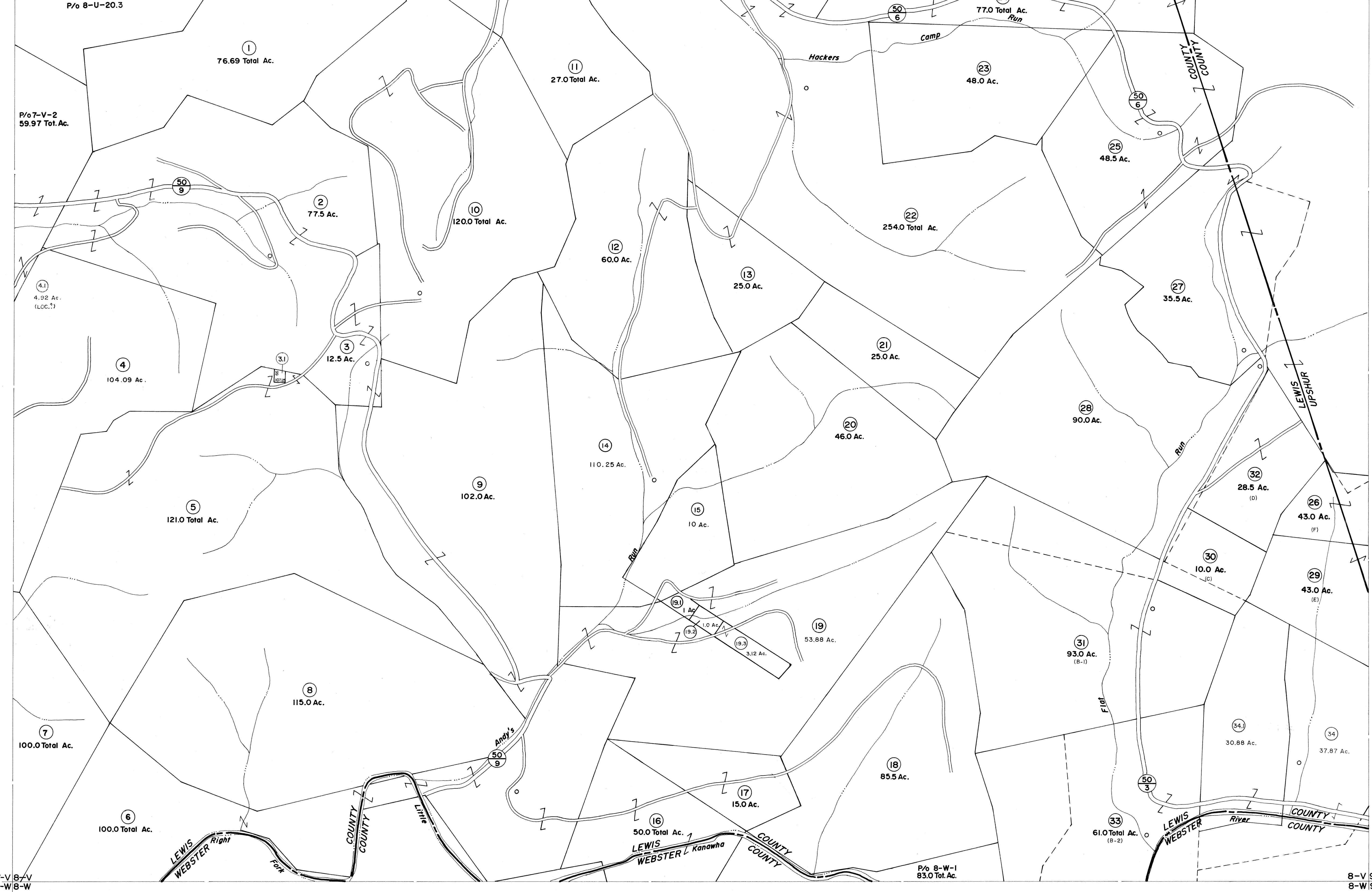


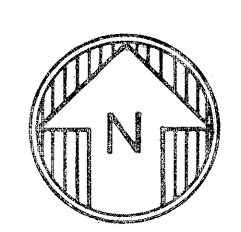
7-U8-U
7-V8-V

8-U
8-V 9-V



7-V8-V
7-W8-W

8-V 9-V
8-W 9-W



For Tax Purposes Only

Prepared by
VOGT, IVERS AND ASSOCIATES
 ENGINEERS-ARCHITECTS
 CHARLESTON, W.VA.
 CINCINNATI, OHIO

Property line —————
 Edge of pavement or roadway ————
 Corporation line - - - - -
 District line - - - - -
 County line - - - - -

Original lot line - - - - -
 Deed lot number (15)
 Parcel or index number (99)
 Improvement ————
 Railroad ————

Revisions			
1	PARCEL 3-1 ADDED 10-21-64	9	O.G.I.S 4-15-96 J.E.B
2	GOLDEN 3-74 P.A.M	10	6-1-2000 J.E.B
3	Revised to 7-81 D.P.	11	4-15-2001 J.E.B
4	to December 1983 C.P.	12	
5	REVISED TO 7-1-87	13	
6	Revised to 7-1-87	14	
7	REV TO 1-1-90 NCS	15	
8	OGIS 3-6-92 TL	16	

KEY MAP

7-U8-U
 7-V8-V 9-V
 7-W8-W 9-W

LEWIS COUNTY

STATE OF WEST VIRGINIA

Office of Assessor

DISTRICT
COLLINS SETTLEMENT

SHEET NO: 8-V

Date, Aerial Photography: 4-25-62
 Photo No: LE-2-114

Date, Map: 9-19-64
 Scale: 1" = 400'