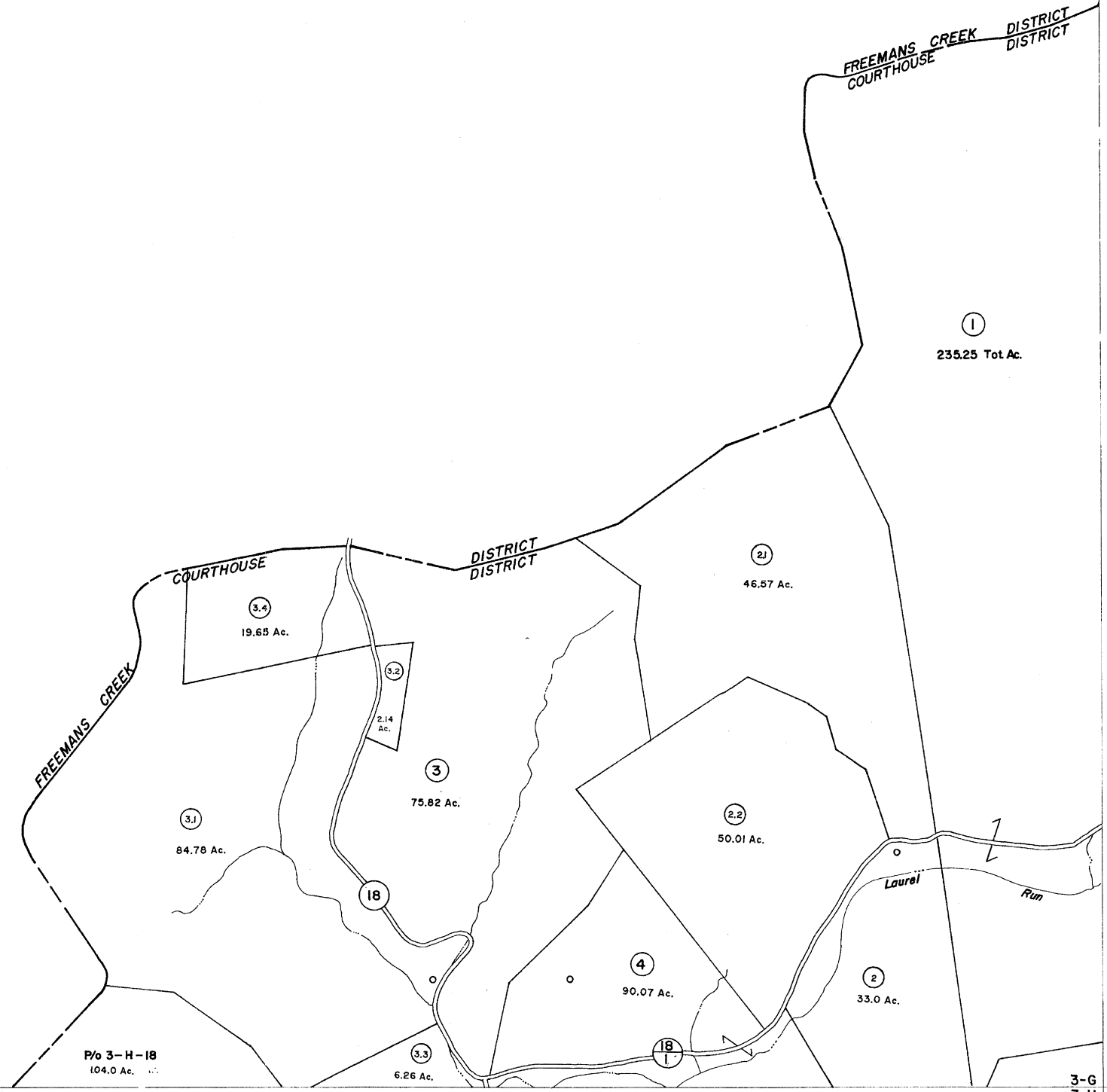


3-6

3-G 4-G

3-G
2-H 3-H

3-G 4-G
3-H 4-H

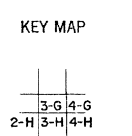


For Tax Purposes Only

Prepared by
VOGT, IVERS AND ASSOCIATES
 ENGINEERS-ARCHITECTS
 CHARLESTON, W.VA.
 CINCINNATI, OHIO

Property line	—————	Original lot line	-----
Edge of pavement or roadway	-----	Deed lot number	(15)
Corporation line	-----	Parcel or index number	(15)
District line	-----	Improvement	o
County line	-----	Railroad	—+—+—+—

Revisions	
1	Revised 4-25-71
2	Revised to 7-1-81
3	4-15-2001 J.E.B.
4	8-15-2002 J.E.B.
5	3-5-2003 J.E.B.
6	8-15-2004 J.E.B.
7	5-1-05 J.E.B.
8	8-1-08 J.E.B.
9	4-15-09 J.E.B.
10	
11	
12	
13	
14	
15	
16	
17	
18	
19	
20	
21	
22	
23	
24	



LEWIS COUNTY
 STATE OF WEST VIRGINIA
 Office of Assessor

DISTRICT
COURTHOUSE

SHEET NO: 3-G

Date, Aerial Photography: 4-25-62
 Photo No: LE - 2-29

Date, Map: 1-5-62
 Scale: 1" = 40'