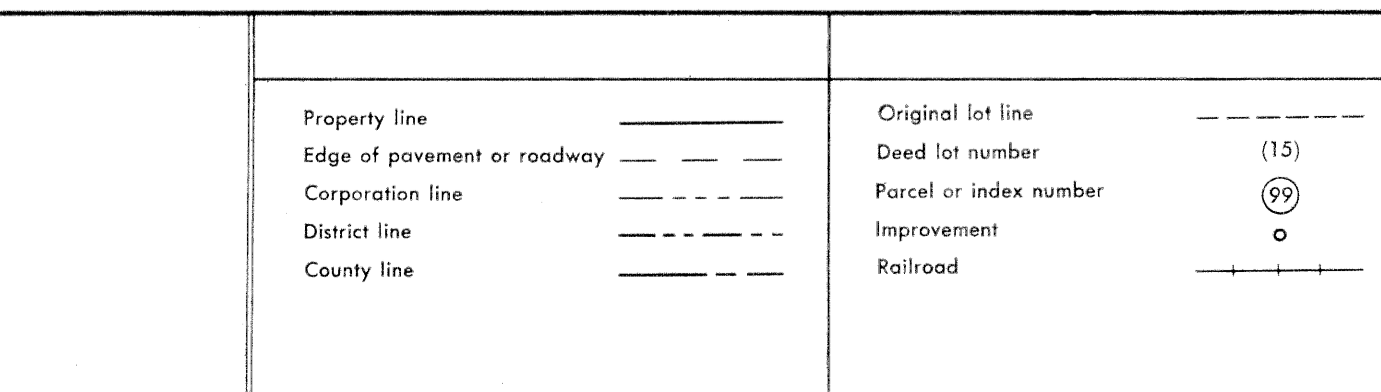


For Tax Purposes Only

Prepared by
VOGT, IVERS AND ASSOCIATES
 ENGINEERS-ARCHITECTS
 CHARLESTON, W.VA.
 CINCINNATI, OHIO



Revisions			
1	PARCEL 17-1, ADDED, 4-13-65	9	1-1-90
2	REVISED TO: 4-22-71	10	OGIS 3-6-92
3	REVISED TO: 7-18-77	11	O.G.I.S 4-15-96
4	To December, 1983 C.P.	12	3-15-98
5	7-1-84 L.E.S.	13	6-1-2000
6	Revised to 7-1-85	14	5-1-05
7	To 7-1-86 C.P.	15	
8	1-1-89	16	

KEY MAP

3-H 4-H-5-H
 3-J 4-J-5-J
 3-K 4-K-5-K

LEWIS COUNTY

STATE OF WEST VIRGINIA

Office of Assessor

DISTRICT

COURTHOUSE

SHEET NO: 4-J

Date, Aerial Photography: 4-25-62
 Photo No: LE-2-42

Date, Map: 1-4-65
 Scale: 1"=400'