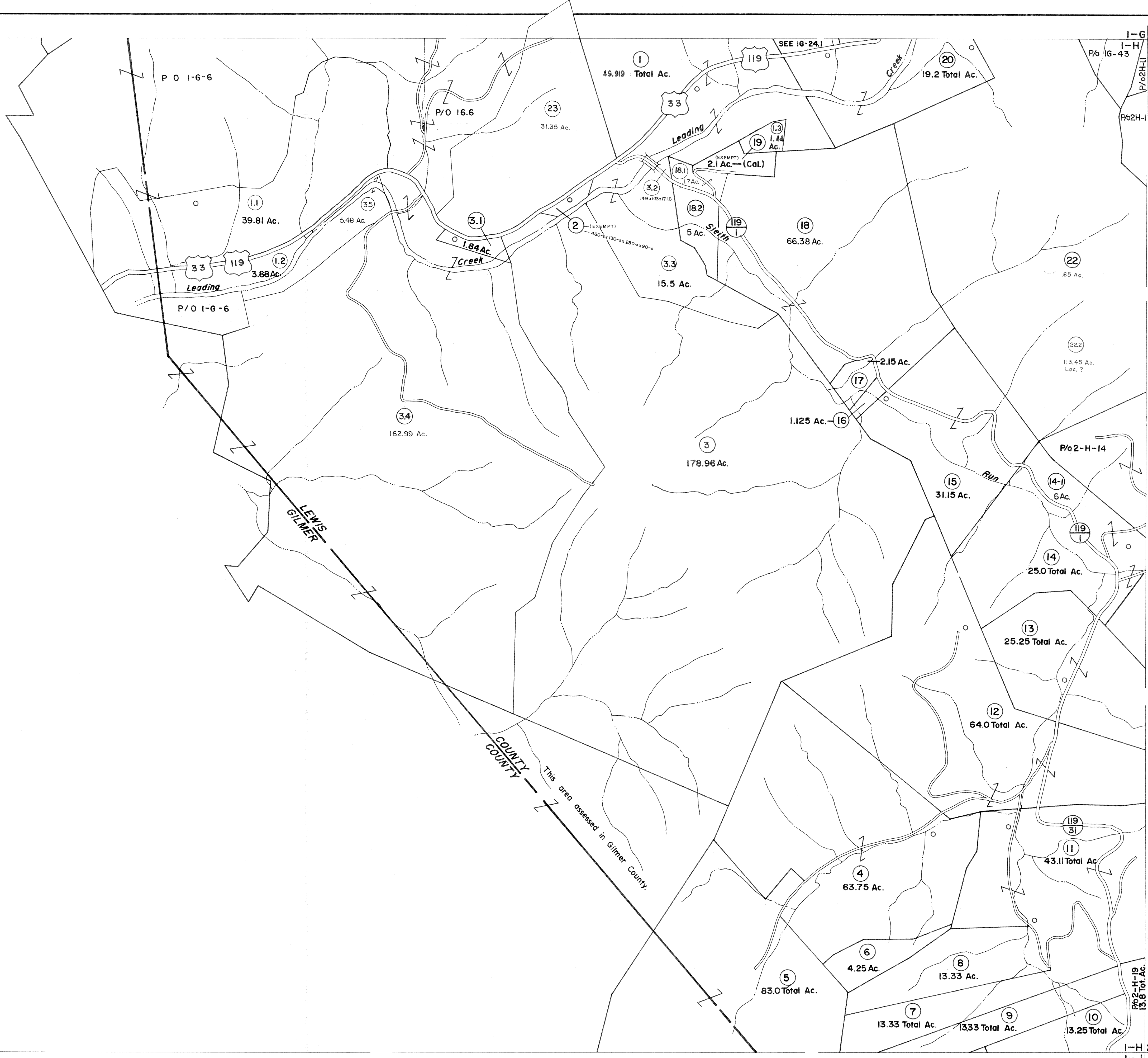


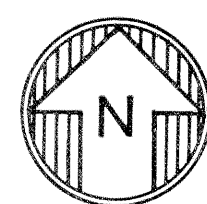
I-H

I-G 2-G  
I-H 2-H



I-H

I-H 2-H  
I-J

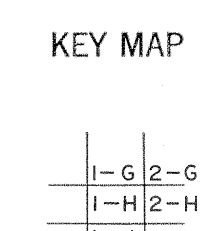


For Tax Purposes Only  
 Prepared by  
**VOGT, IVERS AND ASSOCIATES**  
 ENGINEERS-ARCHITECTS  
 CHARLESTON, W.VA.  
 CINCINNATI, OHIO

Property line	—————
Edge of pavement or roadway	- - - - -
Corporation line	—————
District line	—————
County line	—————

Original lot line	—————
Deed lot number	(15)
Parcel or index number	⊙
Improvement	⊙
Railroad	—————

Revisions				
1	PARCEL 14-1, ADDED, 3-23-65	9	4-15-2001 J.E.B	17
2	6/76 PW	10	8-18-2004 JEB	18
3	Revised to 7-1-8 C.P.	11		19
4	To December 1983 C.P.	12		20
5	7-1-84 L.E.S.	13		21
6	July, 1986 TRL	14		22
7	July, 1987 TRL	15		23
8	OGIS 3-6-92 TL	16		24



**LEWIS COUNTY**  
 STATE OF WEST VIRGINIA  
 Office of Assessor

DISTRICT  
**FREEMANS CREEK**  
 SHEET NO: I-H  
 Date, Aerial Photography: 4-25-62  
 Photo No: LE-2-7  
 Date, Map: 1-13-65  
 Scale: 1" = 400'