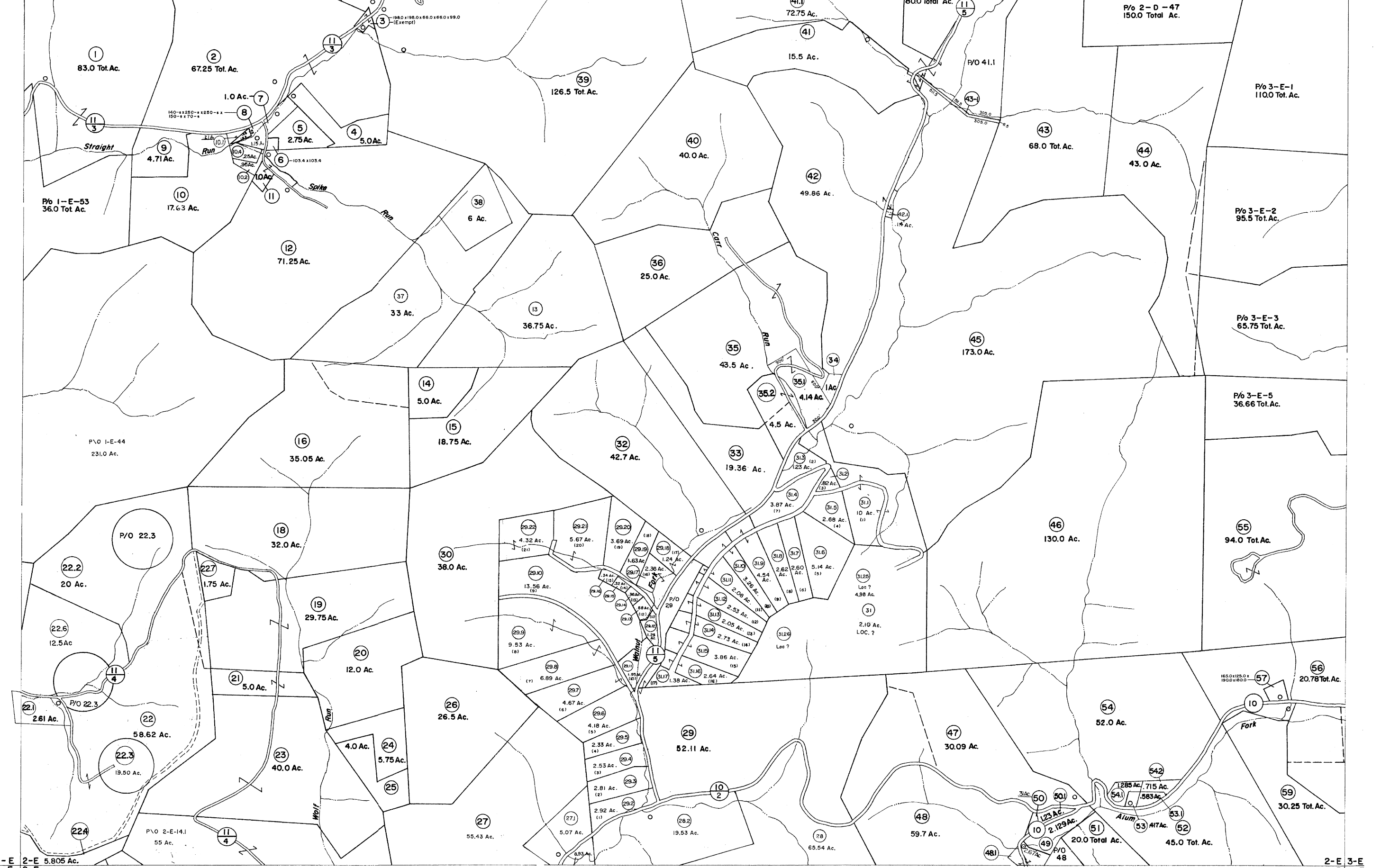


1-D 2-D
1-E 2-E

2-D 3-D
2-E 3-E



1-E 2-E 5.805 Ac.
1-F 2-F

2-E 3-E
2-F 3-F



For Tax Purposes Only

Prepared by
VOGT, IVERS AND ASSOCIATES
 ENGINEERS-ARCHITECTS
 CHARLESTON, W.VA.
 CINCINNATI, OHIO

Property line ———
 Edge of pavement or roadway - - - -
 Corporation line ———
 District line ———
 County line ———

Original lot line - - - - -
 Deed lot number (15)
 Parcel or Index number (99)
 Improvement o
 Railroad ———

Revisions			
1	PARCEL 43-1, ADDED, 3-1-85	9	July, 1987 TRL
2	GOLDEN 3/12/74	10	To 1-1-89 JEB
3	" " " " " "	11	" " " " " "
4	Revised to 7-1-85	12	O.G.I.S. 4-15-96 J.E.B
5	To December 1983 C.P.	13	4-15-2001 J.E.B
6	7-1-84 L.E.S.	14	5-1-05 J.E.B
7	Revised to 7-1-85	15	5-1-06 J.E.B
8	July, 1986 TRL	16	4-1-07 J.E.B

KEY MAP

1-D-2-D-3-D
 1-E-2-E-3-E
 1-F-2-F-3-F

LEWIS COUNTY

STATE OF WEST VIRGINIA

Office of Assessor

DISTRICT

FREEMANS CREEK

SHEET NO: 2-E

Date, Aerial Photography: 4-25-62
 Photo No: L E 2-16

Date, Map: 1-8-65
 Scale: 1"=400'