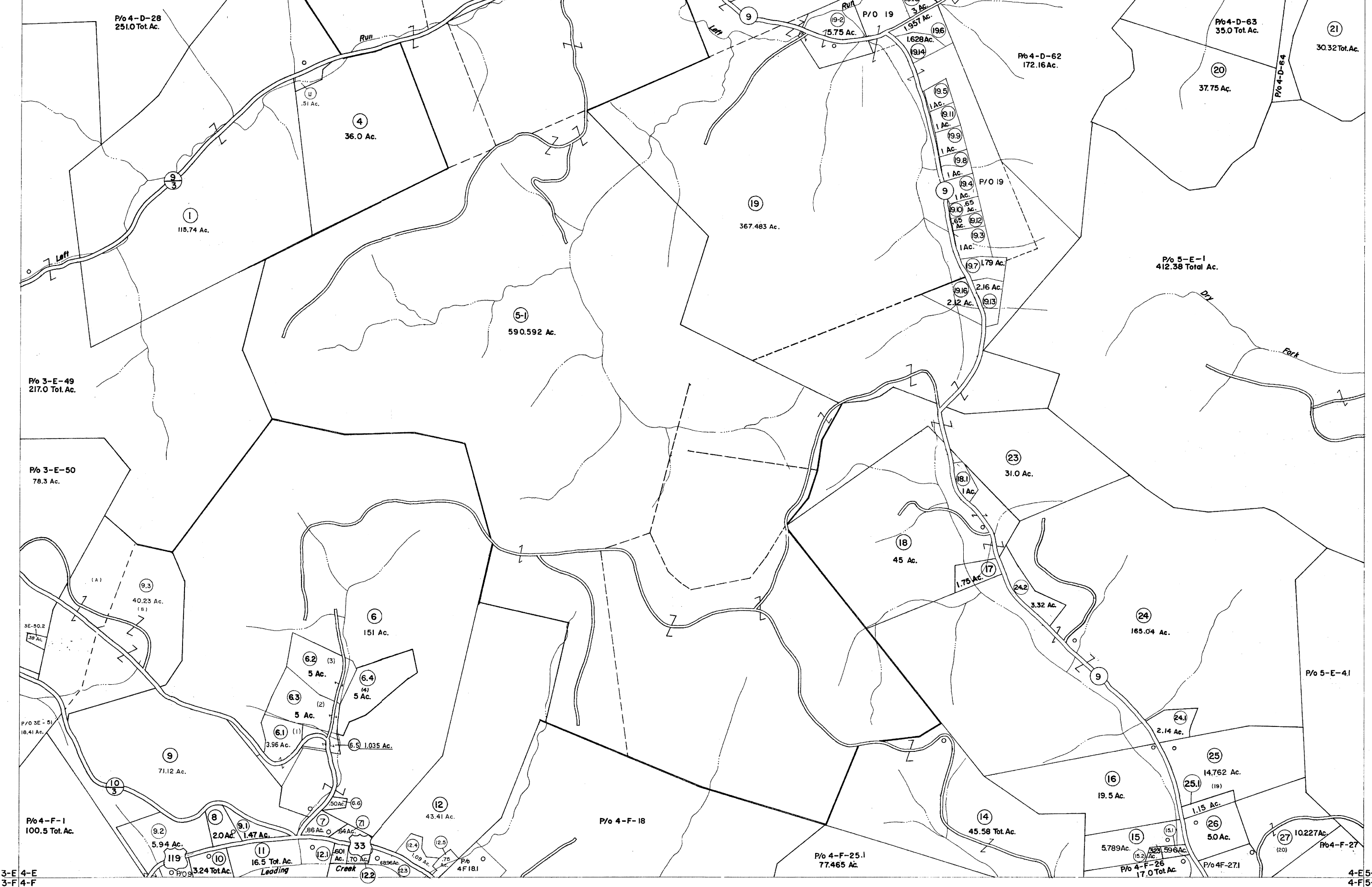


3-D 4-D  
3-E 4-E

4-D5-D  
4-E 5-E



3-E 4-E  
3-F 4-F

4-E 5-E  
4-F 5-F



For Tax Purposes Only

Prepared by  
**VOGT, IVERS AND ASSOCIATES**  
 ENGINEERS-ARCHITECTS  
 CHARLESTON, W.VA.  
 CINCINNATI, OHIO

Property line  
 Edge of pavement or roadway  
 Corporation line  
 District line  
 County line

Original lot line  
 Dead lot number  
 Parcel or index number  
 Improvement  
 Railroad

Revisions	
1 PARCELS 5-1,19-1,22-1,	9 July, 1986 TRL 17
2 ADDED, 3-1-65	10 July, 1987 TRL 18
3 PARCEL 19-2 ADDED, 4-7-65	11 To 1-1-89 JEB 19
4 GOLDEN 3-74 PAM	12 Revised to 1-1-90 JEB 20
5 6-76 PW	13 0615 3-6-92 TL 21
6 Revised to 7-1-84 JEB	14 0,6,1,5 4-15-96 J.E.B 22
7 7-1-84 L.E.S	15 3-15-98 J.E.B 23
8 Revised to 7-1-85 JEB	16 3-15-2003 JEB 24

KEY MAP  
 3-D4-D5-D  
 3-E4-E5-E  
 3-F4-F5-F

**LEWIS COUNTY**  
 STATE OF WEST VIRGINIA  
 Office of Assessor

DISTRICT  
**FREEMANS CREEK**

SHEET NO: 4-E

Date, Aerial Photography: 4-25-62  
 Photo No: LE-2-46  
 Date, Map: 1-8-62  
 Scale: 1" = 40'