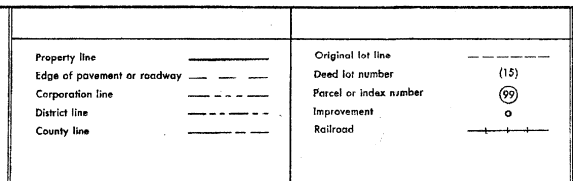


**For Tax Purposes Only**

Prepared by  
**VOGT, IVERS AND ASSOCIATES**  
 ENGINEERS-ARCHITECTS  
 CHARLESTON, W.VA.  
 CINCINNATI, OHIO



Revisions			
1	PARCELS 10-1, 27-1, ADDED	9	G.G.S 4-15-96 J.E.B
2	3-4-65	10	6-1-2000 J.E.B
3	PARCEL 9-1, ADDED, 4-5-65	11	6-15-2002 J.E.B
4	5-25-76	12	5-1-05 J.E.B
5	Revised to 7-1-81	13	8-1-08 J.E.B
6	To December 1983 C.P.	14	4-1-07 J.E.B
7	Revised to 1-1-90	15	8-1-08 J.E.B
8	Revised to 1-1-90	16	4-15-09 J.E.B

**KEY MAP**

4-B-5-B  
 4-C-5-C  
 4-D-5-D

**LEWIS COUNTY**

STATE OF WEST VIRGINIA

Office of Assessor

DISTRICT  
**FREEMANS CREEK**

SHEET NO: 5-C

Date, Aerial Photography: 4-25-62  
 Photo No: LE-2-58

Date, Map: 3-4-65  
 Scale: 1" = 400'