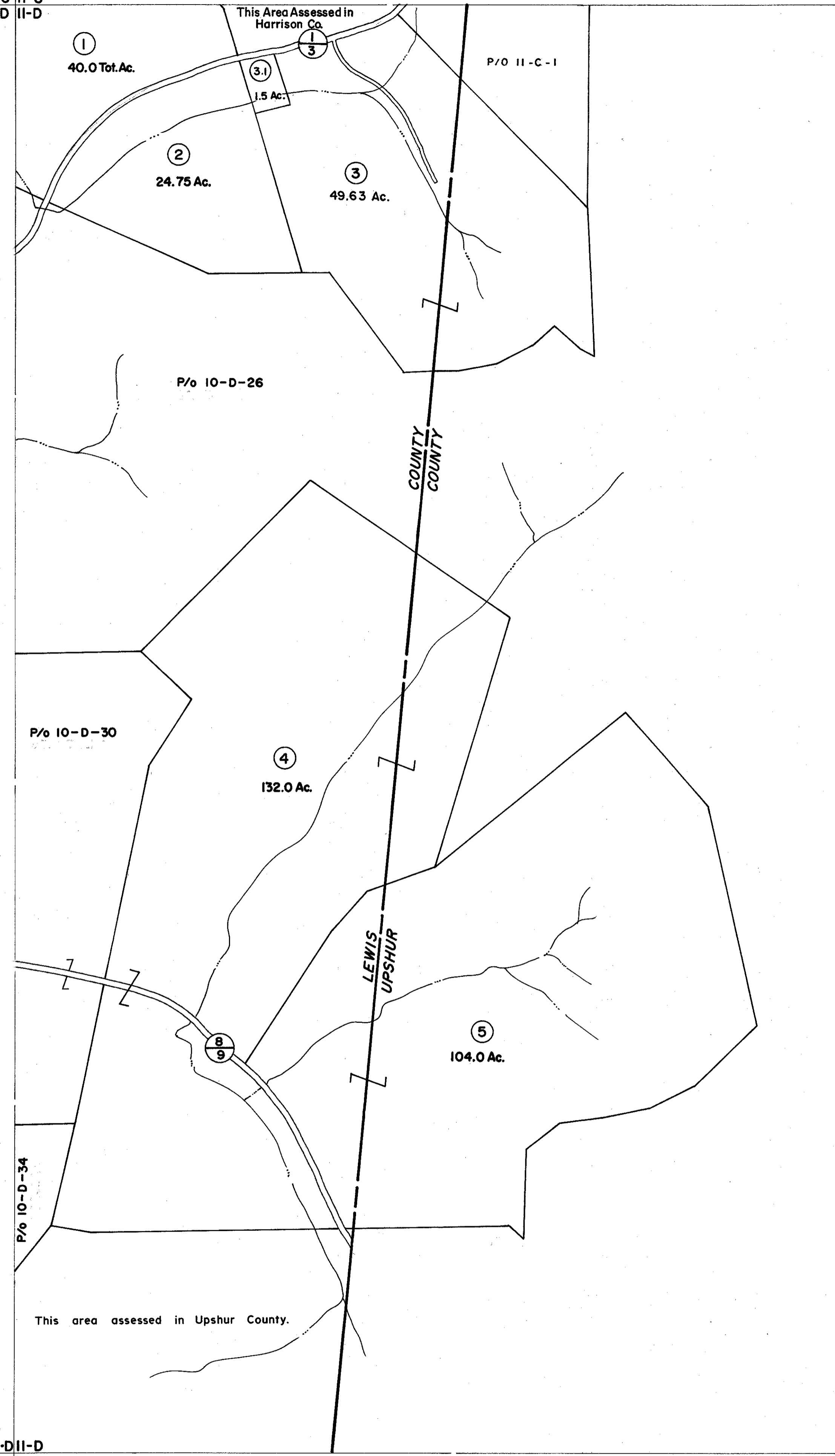
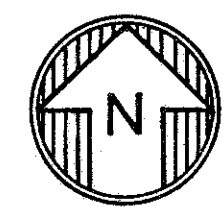


10-C 11-C
10-D 11-D



10-D 11-D
10-E 11-E



For Tax Purposes Only

Prepared by
VOGT, IVERS AND ASSOCIATES
 ENGINEERS-ARCHITECTS
 CHARLESTON, W.VA.
 CINCINNATI, OHIO

Property line _____
 Edge of pavement or roadway - - - - -
 Corporation line - - - - -
 District line - - - - -
 County line - - - - -

Original lot line - - - - -
 Deed lot number (15) _____
 Parcel or index number (9) _____
 Improvement _____
 Railroad _____

Revisions	
1	Revised 12/18/35
2	O.G.I.S. 4-15-96 J.E.B.
3	
4	
5	
6	
7	
8	
9	
10	
11	
12	
13	
14	
15	
16	
17	
18	
19	
20	
21	
22	
23	
24	

KEY MAP

10-C 11-C
 10-D 11-D
 10-E 11-E

LEWIS COUNTY

STATE OF WEST VIRGINIA

Office of Assessor

DISTRICT

HACKERS CREEK

SHEET NO: 11-D

Date, Aerial Photography: 4-25-62
 Photo No: UP-3-157

Date, Map: 11-5-62
 Scale: 1" = 400'