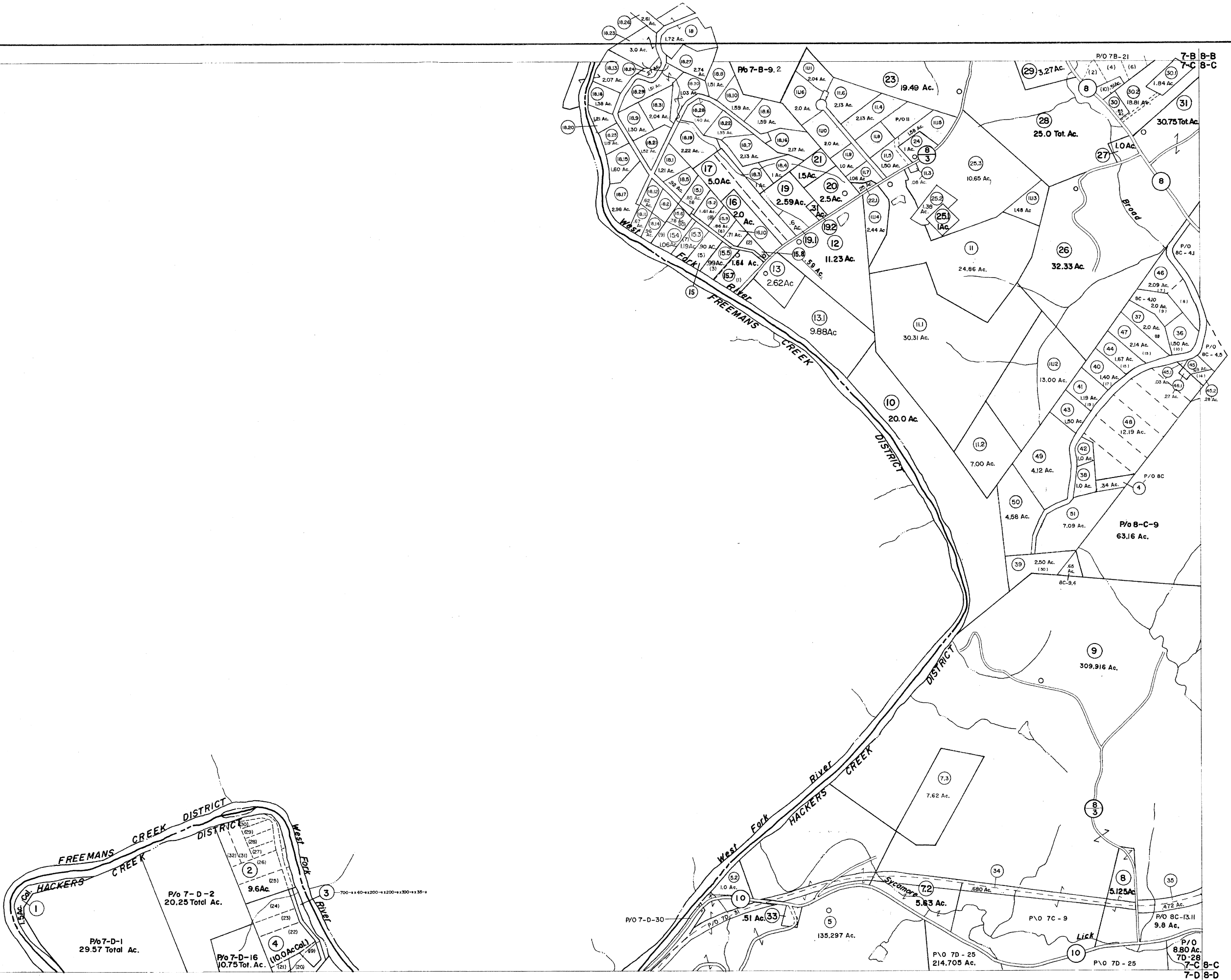


7-B  
7-C

7-C  
7-D



For Tax Purposes Only

Prepared by  
**VOGT, IVERS AND ASSOCIATES**  
 ENGINEERS-ARCHITECTS  
 CHARLESTON, W.VA  
 CINCINNATI, OHIO

Property line	-----	Original lot line	-----
Edge of pavement or roadway	-----	Deed lot number	(15)
Corporation line	-----	Parcel or index number	(9)
District line	-----	Improvement	o
County line	-----	Railroad	o

Revisions			
1	6-28-76	SAH	9
2	Revised to 7-18-87		10
3	Revised to 7-18-87		11
4	To 7-1-84	C.P.	12
5	REV TO 7-1-85	NCS	13
6	Revised to 7-1-87		14
7	To 1-1-89		15
8	1-1-90	TRI	16
9	0615	3-6-92	TL
10	0615	4-15-96	J.E.B
11		3-15-98	J.E.B
12		6-1-2000	J.E.B
13		4-15-2001	J.E.B
14		6-15-2002	J.E.B
15		3-15-2003	J.E.B
16		8-15-2004	J.E.B
17	4-1-07	J.E.B	
18	8-1-08	J.E.B	
19	4-15-09	J.E.B	
20			
21			
22			
23			
24			

KEY MAP

7-B 5-B  
 7-C 8-C  
 7-D 8-D

**LEWIS COUNTY**

STATE OF WEST VIRGINIA

Office of Assessor

DISTRICT  
**HACKERS CREEK**

SHEET NO: 7-C

Date, Aerial Photography: 4-25-62  
 Photo No: LE-2-93

Date, Map: 2-4-64  
 Scale: 1"=400'