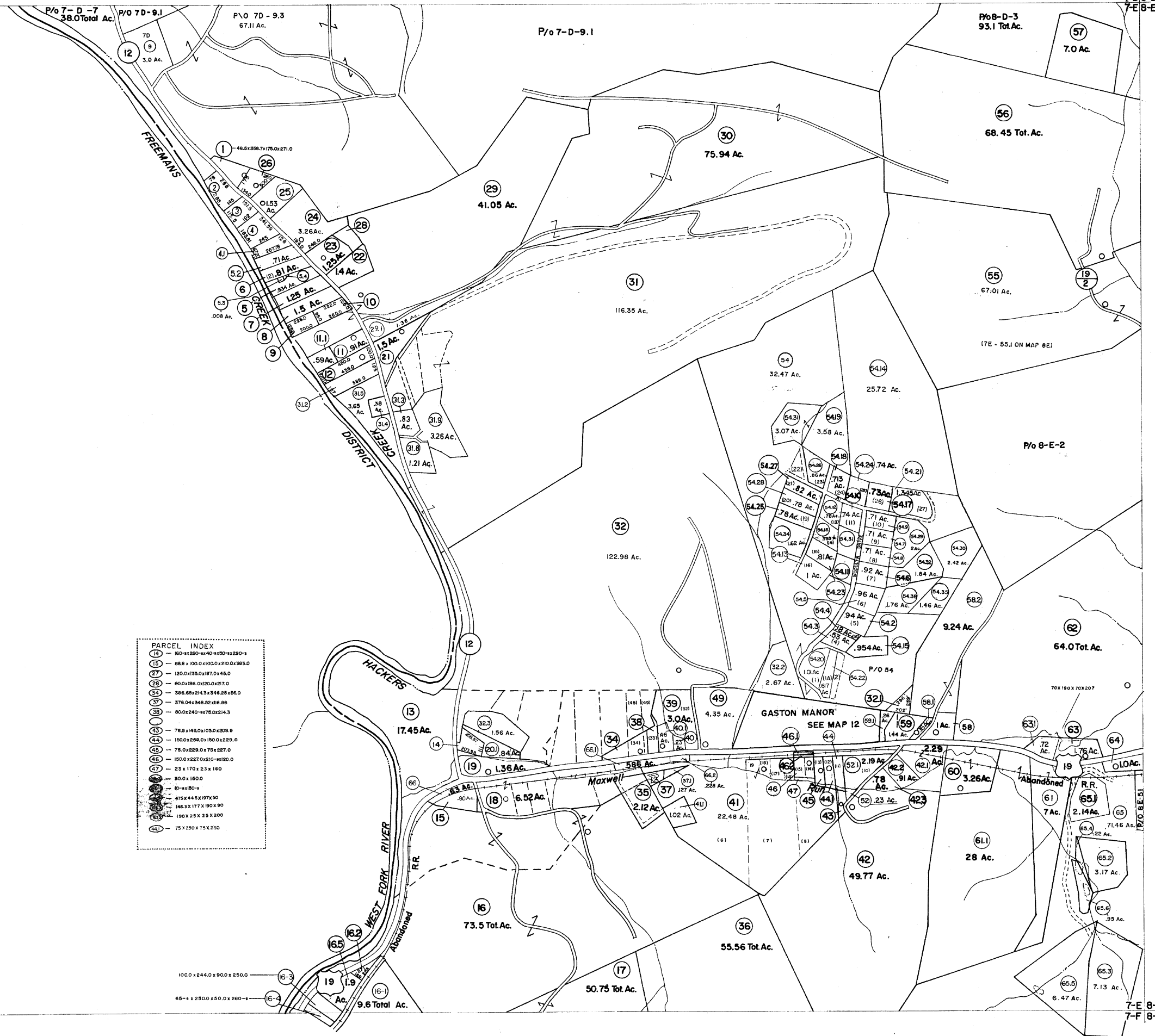


7-D
7-E

7-D-B-D
7-E-B-E

7-E
7-F

7-E-B-E
7-F-B-F



PARCEL INDEX

14	180 x 250 x 140 x 170 x 1250 x 1
15	88.8 x 100.0 x 100.0 x 210.0 x 363.0
27	120.0 x 135.0 x 187.0 x 48.0
28	80.0 x 186.0 x 102.0 x 217.0
33	386.65 x 214.3 x 348.25 x 156.0
37	376.04 x 348.52 x 118.98
38	80.0 x 240.0 x 175.0 x 214.3
43	78.0 x 148.0 x 103.0 x 208.9
44	150.0 x 258.0 x 150.0 x 229.0
45	75.0 x 228.0 x 75.0 x 227.0
46	180.0 x 227.0 x 210.0 x 1120.0
47	23 x 170 x 23 x 160
48	80.0 x 180.0
49	10 x 180 x 1
50	475 x 445 x 197 x 90
51	146.3 x 177 x 90 x 90
52	190 x 25 x 25 x 200
53	175 x 250 x 75 x 230

For Tax Purposes Only

Prepared by
VOGT, IVERS AND ASSOCIATES
 ENGINEERS-ARCHITECTS
 CHARLESTON, W.VA.
 CINCINNATI, OHIO

Property line ————
 Edge of pavement or roadway ————
 Corporation line ————
 District line - - - - -
 County line ————

Original lot line ————
 Dead lot number (15) ————
 Parcel or index number (15) ————
 Improvement (15) ————
 Railroad ————

Revisions			
1	PARCELS 461,46-2	9	6-28-76 BAH
2	ADDED, 11-2-84	10	To 7-1-84 C.P.
3	PARCELS 16-1, 16-2, 16-3 & 16-4, ADDED 12-21-84	11	REV TO 7-1-85 NCS
4	ADDED, 3-31-85	12	REV TO 7-1-86 NCS
5	PARCELS 31-1 & 32-1	13	Revised to 7-1-87
6	ADDED, 3-31-85	14	To 1-1-87
7	3-74 PAM	15	1-1-90
8	Revised to 7-1-81	16	OGIS 3-6-92 TL
9		17	0-6-1-95 JEB
10		18	6-1-2000 JEB
11		19	4-15-2001 J.E.B.
12		20	8-18-2002 JEB
13		21	3-18-2003 JEB
14		22	8-18-2004 JEB
15		23	5-1-05 JEB
16		24	5-1-06 JEB

4-1-07 JEB
 8-1-08 JEB

KEY MAP

7-D B-D
 7-E B-E
 7-F B-F

LEWIS COUNTY

STATE OF WEST VIRGINIA

Office of Assessor

DISTRICT
HACKERS CREEK

SHEET NO: 7-E

Date, Aerial Photography: 4-25-62
 Photo No: LE-2-94
 Date, Map: 1-31-64
 Scale: 1" = 400'