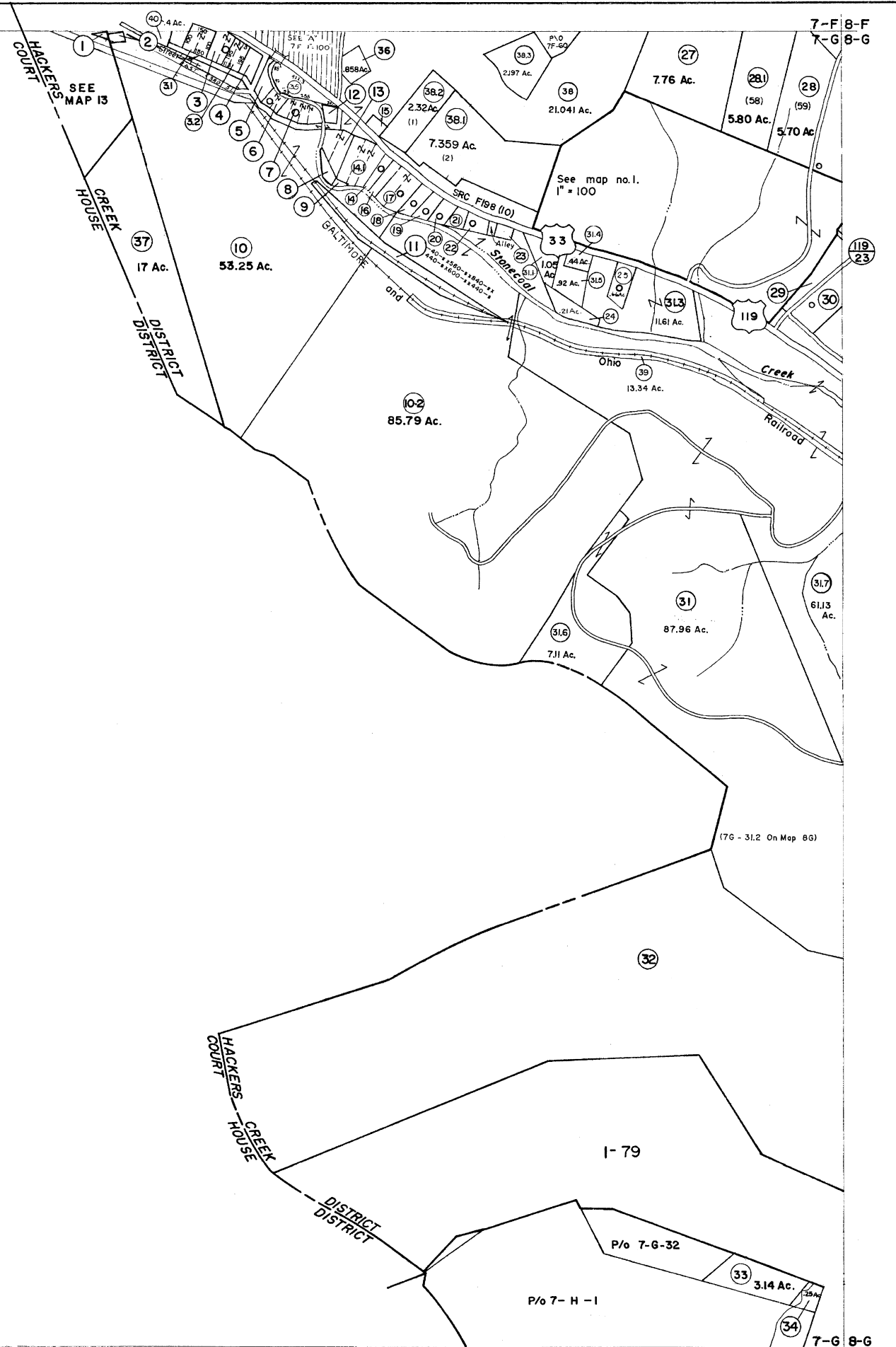


7-F  
7-G

7-F 8-F  
7-G 8-G

7-G  
7-H

7-G 8-G  
7-H 8-H



**PARCEL INDEX**

1	100.0 x 103.80 x 117.7
2	73.4 x 98.0 x 40.8 x 95.4
3	360.0 x 186.0 x 365.0 x 240.0
4	84.0 x 200.0 x 20.0 x 49.0 x 186.5
5	80.0 x 210.0 x 300.0 x 70.0 x 180.0
6	94.0 x 128.0 x 130.0 x 130.0
7	128.0 x 210.0 x 107.0 x 364.0
8	181.24 x 51.0 x 79.0 x 83.0 x 15.8
9	75.0 x 90.0 x 51.0
10	131.0 x 90.0 x 75.0 x 107.0
11	84.0 x 75.0 x 336.0 x 181.24 x 185.0
12	241.0 x 57.0 x 263.5 x 47.0
13	88' x 110'
14	75.0 x 208.0 x 58.0 x 241.0
15	150.0 x 206.0 x 150.0 x 208.0
16	75.0 x 208.0 x 84.0 x 208.0
17	75.0 x 180.0 x 102.0 x 208.0
18	100.0 x 114.0 x 105.0 x 128.0
19	98.0 x 98.0 x 109.0 x 114.0
20	130.0 x 160.0 x 150.0 x 98.0
21	110.0 x 160.0 x 110.0 x 80.0
22	400.0 x 110.0 x 240.0 x 200.0
23	101.0 x 420.0 x 100.0 x 428.0
24	1000.0 x 851.0 x 855.0 x 132.0 x 460.0 x 137.0
25	718.0 x 600.0 x 1082.0 x 252.0 x 708.0
26	512.0 x 61.0 x 261.0 x 263.0 x 163.0
27	512.0 x 175.0 x 512.0 x 175.0
28	189.0 x 263.5 x 185.0 x 399.8

**For Tax Purposes Only**

Prepared by  
**VOGT, IVERS AND ASSOCIATES**  
 ENGINEERS-ARCHITECTS

CHARLESTON, W.VA.  
 CINCINNATI, OHIO

Property line	—————	Original lot line	-----
Edge of pavement or roadway	-----	Deed lot number	(15)
Corporation line	-----	Parcel or index number	(20)
District line	-----	Improvement	o
County line	-----	Railroad	—+—+—

Revisions			
1	REV. TO 7-1-86	NCS	17
2	PARCEL 10-2 ADDED, 3-31-65	TR	18
3	GOLDEN 3-74 PAM	1-1-90	19
4	BAH 6-28-76	O.G.I.S 4-15-96	20
5	4-26-79 Derr	6-1-2000	21
6	Revised to 7-1-81	6-15-2002	22
7	To 7-1-84 C.P.	3-15-2003	23
8	REV. TO 7-1-85	8-1-08	24

KEY MAP

7-F 8-F  
 7-G 8-G  
 7-H 8-H

**LEWIS COUNTY**

STATE OF WEST VIRGINIA

Office of Assessor

DISTRICT  
**HACKERS CREEK**

SHEET NO: **7-G**

Date, Aerial Photography: 4-25-62  
 Photo No: 1.E-2-127

Date, Map: 11-18-64  
 Scale: 1" = 400'