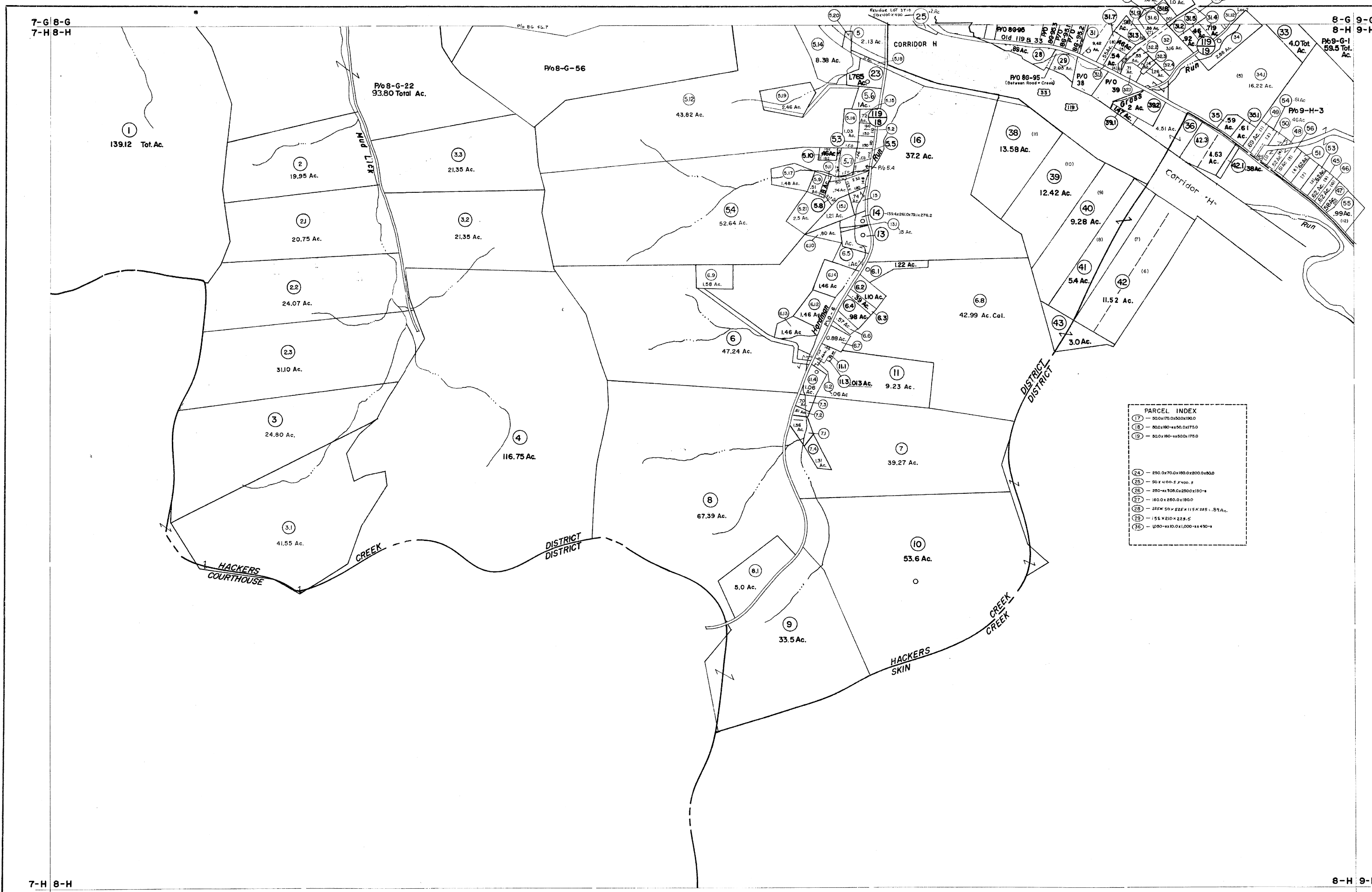


7-G 8-G
7-H 8-H

8-G 9-G
8-H 9-H

7-H 8-H

8-H 9-H



PARCEL INDEX

17	50.0x170.0x50.0x190.0
18	50.0x180.0x50.0x175.0
19	50.0x180.0x50.0x175.0
24	250.0x70.0x180.0x200.0x80.0
25	50.0x100.0x70.0x50.0
26	250.0x100.0x250.0x180.0
27	160.0x250.0x180.0
28	225.0x50.0x225.0x115.0x225.0x89.0
29	156.0x210.0x225.0
35	1250.0x10.0x1,000.0x430.0

For Tax Purposes Only

Prepared by
VOGT, IVERS AND ASSOCIATES
ENGINEERS-ARCHITECTS
CHARLESTON, W.VA.
CINCINNATI, OHIO

Property line	---
Edge of pavement or roadway	---
Corporation line	---
District line	---
County line	---
Original lot line	---
Deed lot number	(15)
Parcel or index number	(99)
Improvement	o
Railroad	---

Revisions

1	Golden 3-19-74 T.G.	9	7-1-89 JEB	17	8-15-2004 JEB
2	6-30-76 BAH	10	1-1-90 TRL	18	5-1-05 J.E.B.
3	Amended 7-1-89 JEB	11	OGIS 3-6-92 TL	19	5-1-05 J.E.B.
4	Amended 1-22-92 JEB	12	O.G.I.S 4-15-96 J.E.B.	20	4-1-07 J.E.B.
5	To 7-1-89 C.P.	13	3-15-98 J.E.B.	21	8-1-08 JEB
6	Amended 7-1-89 JEB	14	4-15-2001 J.E.B.	22	4-15-09 JEB
7	REV. TO 7-1-86 NCS	15	6-15-2002 J.E.B.	23	
8	Revised to 7-1-87 JEB	16	3-15-2003 JEB	24	

KEY MAP

7-G 8-G 9-G
7-H 8-H 9-H

LEWIS COUNTY

STATE OF WEST VIRGINIA

Office of Assessor

DISTRICT
HACKERS CREEK

SHEET NO: 8-H

Date, Aerial Photography: 4-25-62
Photo No: LE-2-126

Date, Map: 11-5-64
Scale: 1"=400'