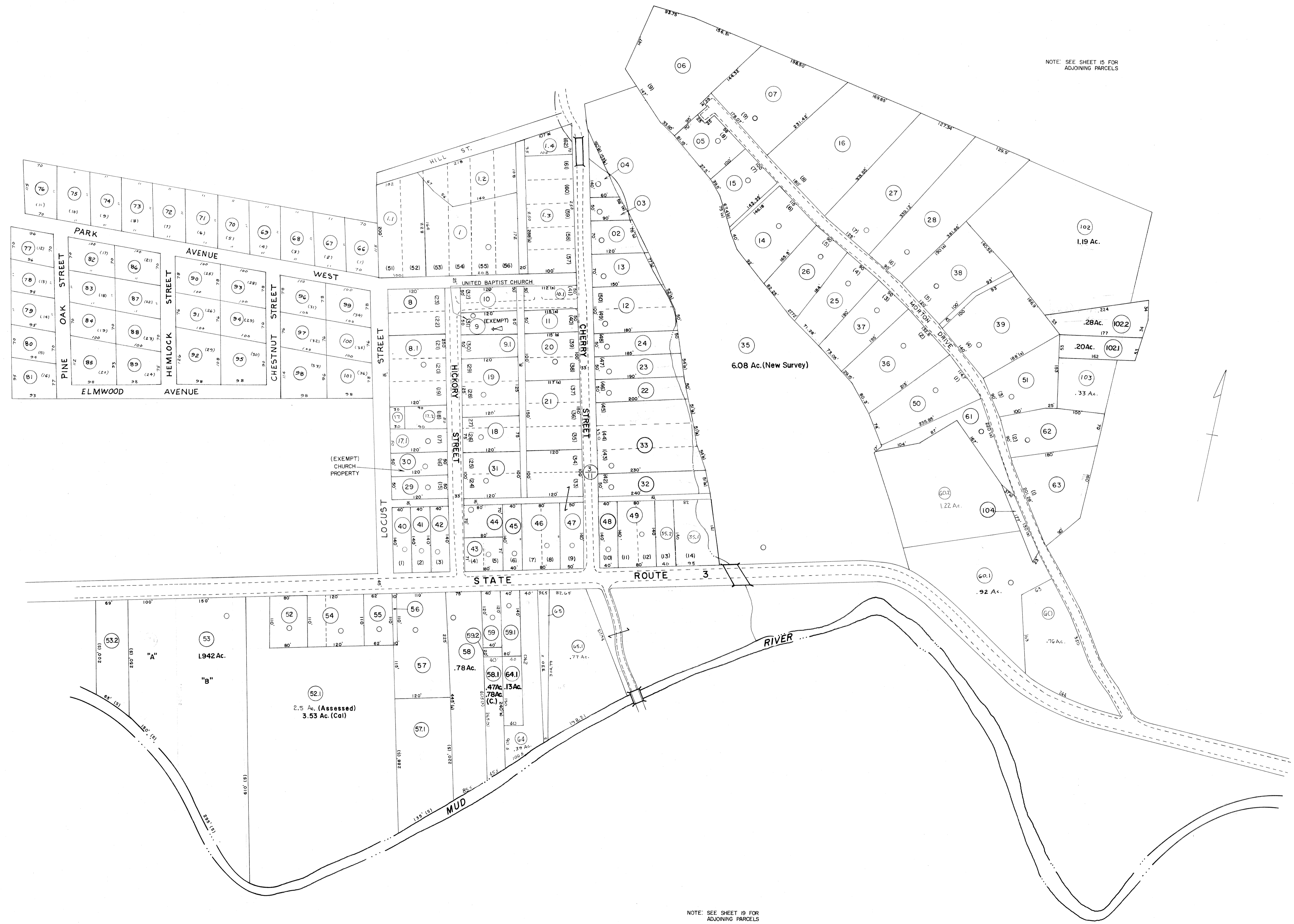


NOTE: SEE SHEET 15 FOR ADJOINING PARCELS



NOTE: SEE SHEET 19 FOR ADJOINING PARCELS

FOR TAX PURPOSES ONLY

Prepared by  
L. ROBERT KIMBALL  
Consulting Engineer  
Ebensburg, Pennsylvania

Legend	
Property line	Original lot line
Edge of pavement or roadway	Deed lot number in parenthesis (15)
Corporation line	Parcel or index number in circle (29)
District line	Improvement
County line	Railroad

Revisions	
1	REVISED 3/17/64
2	REVISED 9/16/65
3	3-24-72 JHP
4	8-28-74 Newly S.S.
5	Revised to 7-21
6	7/1/84 RLB
7	REV. TO 7-1-85 NCS
8	11-20-03 HD

STATE OF WEST VIRGINIA  
COUNTY OF LINCOLN  
Office of Assessor

CARROLL DISTRICT  
SHEET 35

Date, Aerial Photography: MAY, 1961  
Photo No: 721  
Date, Map: NOV, 1962  
Scale: 1" = 100'