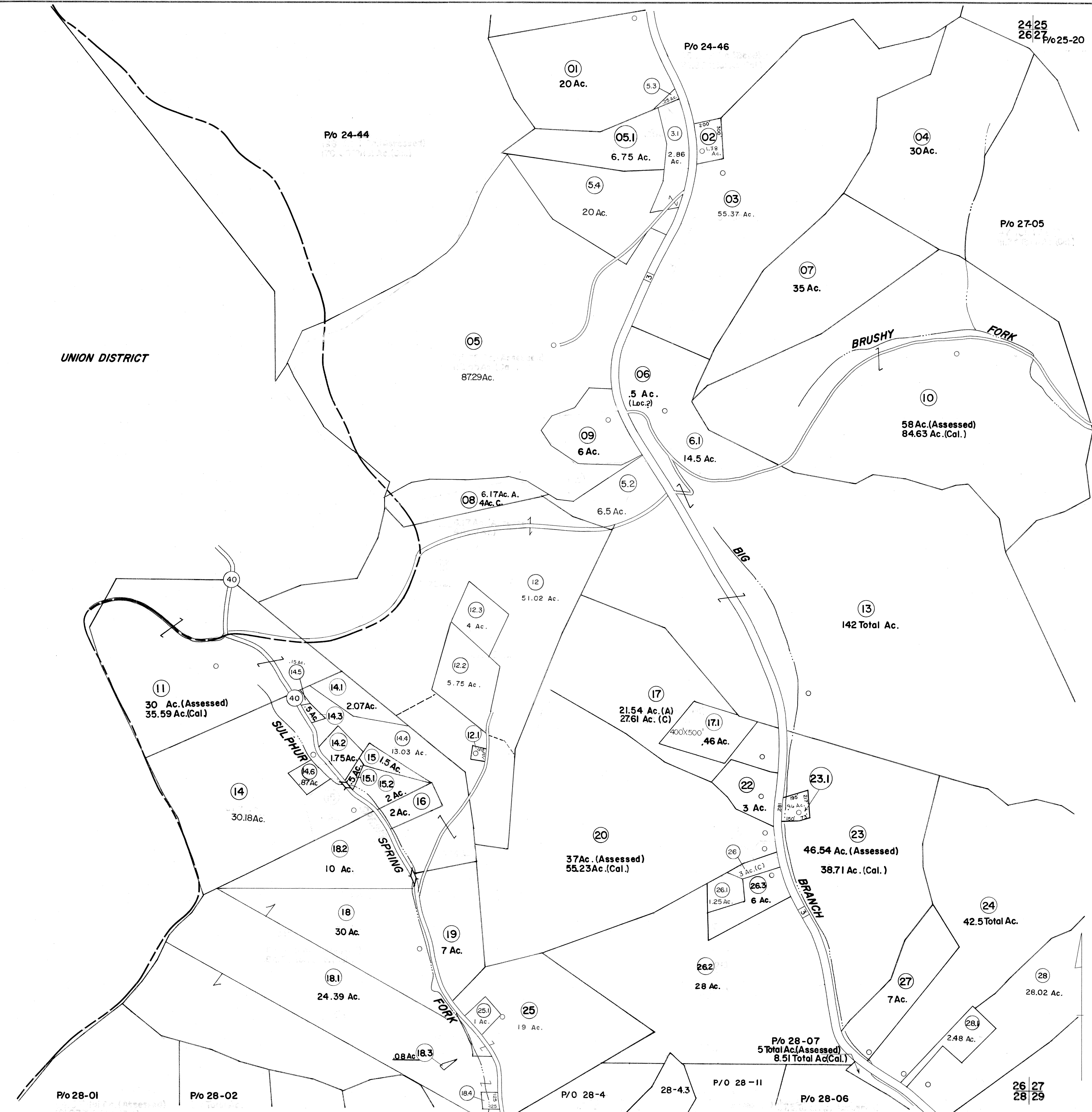


UNION DISTRICT

P/o 27-05



FOR TAX PURPOSES ONLY

Prepared by
L. ROBERT KIMBALL
Consulting Engineer
Ebensburg, Pennsylvania

Legend

| | | | |
|-----------------------------|-------|----------------------------------|-------|
| Property line | ----- | Original lot line | ----- |
| Edge of pavement or roadway | ----- | Dead lot number in parenthesis | (15) |
| Corporation line | ----- | Parcel or index number in circle | (29) |
| District line | ----- | Improvement | ○ |
| County line | ----- | Railroad | + |

Revisions

| | | | | |
|---|-------------------|----|-------------------|----|
| 1 | REVISED 5/6/65 | 9 | Revised to 7-1-89 | 17 |
| 2 | 3-27-72 | 10 | O.G.L.S. 10-1-96 | 18 |
| 3 | W.A. 75 | 11 | 11-17-03 | 19 |
| 4 | Revised to 7-81 | 12 | | 20 |
| 5 | Revised to 7-1-89 | 13 | | 21 |
| 6 | July 1984 | 14 | | 22 |
| 7 | Revised to 7-1-85 | 15 | | 23 |
| 8 | To 7/1/87 C.P. | 16 | | 24 |

STATE OF WEST VIRGINIA
COUNTY OF LINCOLN
Office of Assessor

DUVAL DISTRICT
SHEET 26

Date, Aerial Photography: MAY, 1961
Photo No: 77
Date, Map: DEC, 1964
Scale: 1"=400'