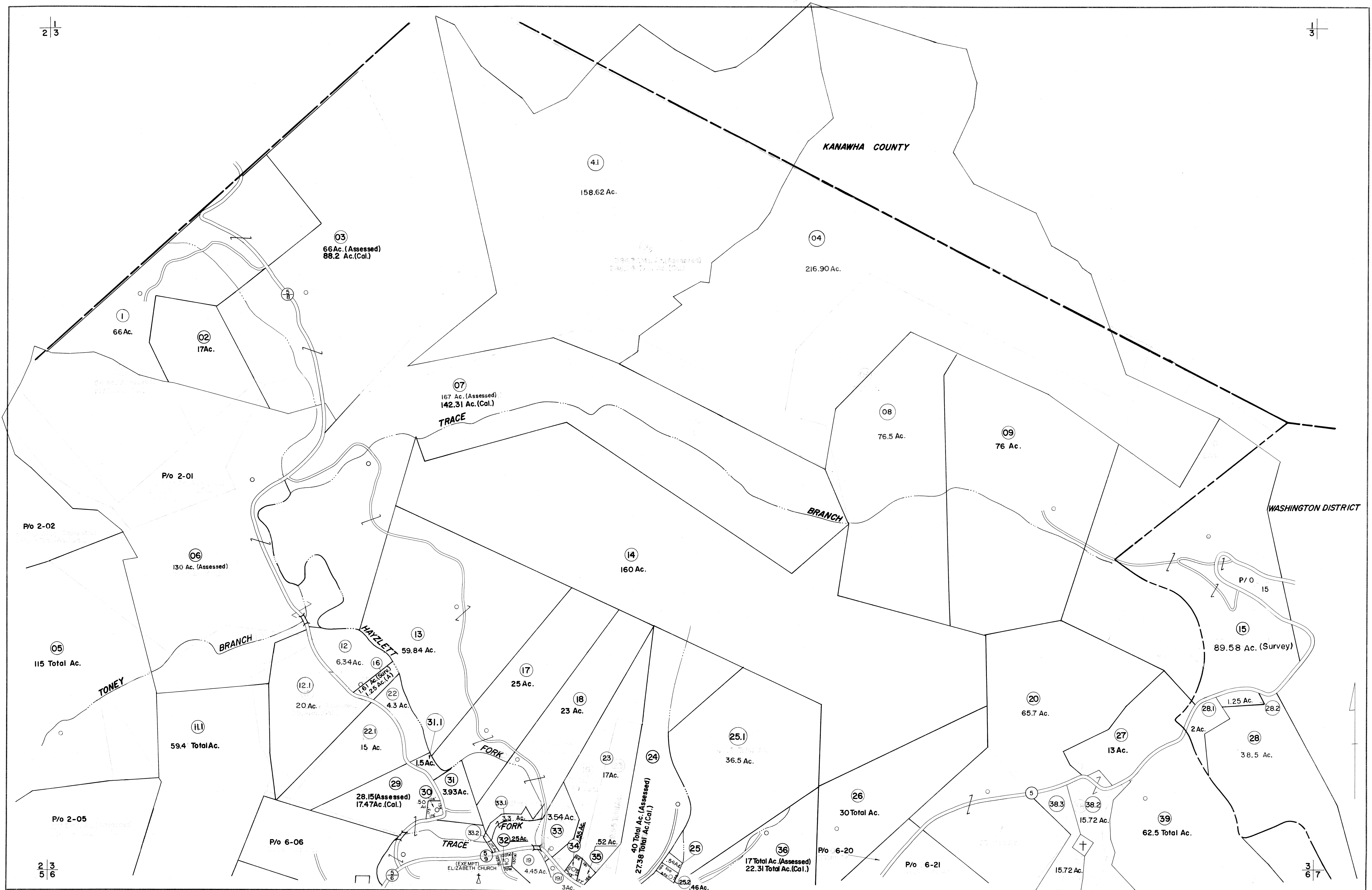


KANAWHA COUNTY

WASHINGTON DISTRICT



FOR TAX PURPOSES ONLY

Prepared by
L. ROBERT KIMBALL
 Consulting Engineer
 Ebensburg, Pennsylvania

Legend

Property line	-----	Original lot line	-----
Edge of pavement or roadway	-----	Deed lot number in parenthesis	(15)
Corporation line	-----	Parcel or index number in circle	(09)
District line	-----	Improvement	o
County line	-----	Railroad	+

Revisions

No.	Description	Date	By
1	REVISED	4/15/65	OGIS
2	REVISED	9/16/65	SAJ
3	REVISED	10/75	HD
4	Revised to T-81		
5	Added 1914		
6	Revised to T-85		
7	To 7/1/87 C.P.		
8	Revised to 7-1-89		

STATE OF WEST VIRGINIA
 COUNTY OF LINCOLN
 Office of Assessor

**DUVAL DISTRICT
 SHEET 03**

Date, Aerial Photography: MAY, 1961
 Photo No: 442
 Date, Map: DEC., 1964
 Scale: 1"=400'