

WAYNE COUNTY

HARTS CREEK DISTRICT

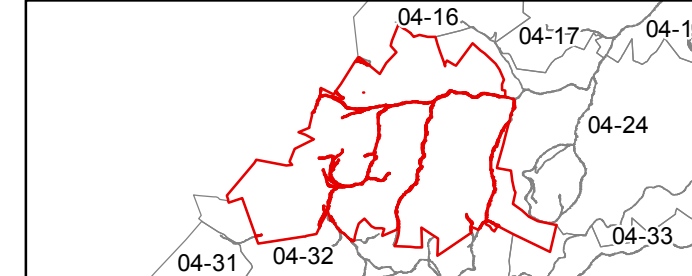
FOR TAX PURPOSES ONLY
Prepared by Lincoln County, WV

Legend

Property Line	Original Lot Line
Road Right of Way	Lot Number (15)
Corporation Line	Parcel Number (99)
District Line	Water
County Line	Railroad

R	11	Revised 5/12/65	9	17
0	2	Revised 7/1/81	10	18
V	3	Revised 7/1/84	11	19
J	4	Revised 7/1/87	12	20
S	5	Revised 7/1/89	13	21
I	6	Revised 7/1/96	14	22
O	7	Revised 12/30/2016	15	23
S	8		16	24

STATE OF WEST VIRGINIA
COUNTY OF LINCOLN
Office of Assessor



HARTS CREEK DISTRICT
SHEET 23
Date, Aerial Photography: 2003
Created: 2/1/2017
Scale: 1" = 400'