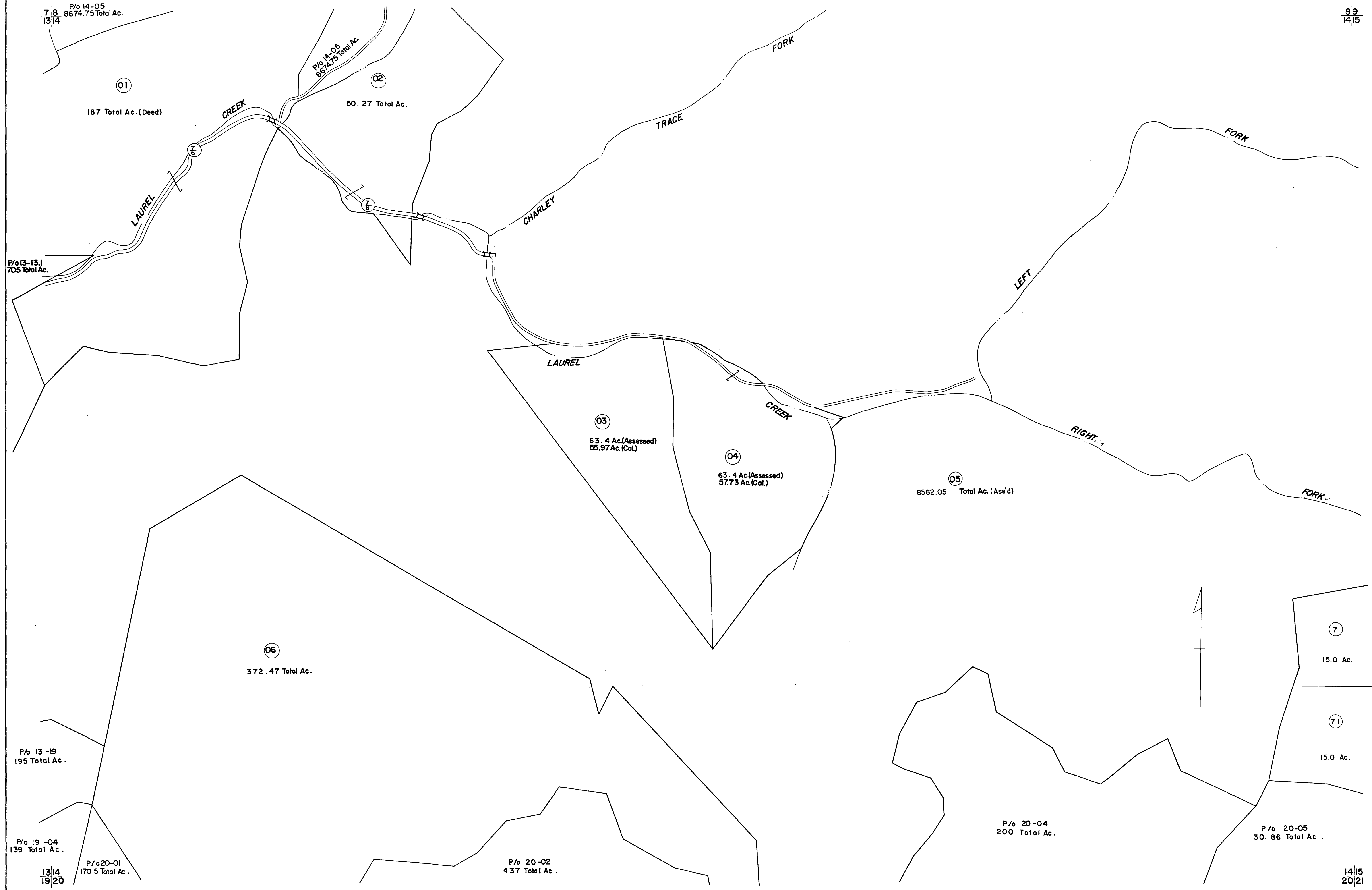


P/o 14-05  
7.8 8674.75 Total Ac.  
13/14

8.9  
14/15



FOR TAX PURPOSES ONLY

Prepared by  
L. ROBERT KIMBALL  
Consulting Engineer  
Ebensburg, Pennsylvania

Legend	
Property line	Original lot line
Edge of pavement or roadway	Deed lot number in parenthesis
Corporation line	Parcel or index number in circle
District line	Improvement
County line	Railroad

Revisions	
1	GUNNAGE 5/21/76 T.G.
2	Revised to 7.81
2	7-1-84 L.E.S.
4	
5	
6	
7	
8	

STATE OF WEST VIRGINIA  
COUNTY OF LINCOLN  
Office of Assessor

HARTS CREEK DISTRICT  
SHEET 14  
Date, Aerial Photography: MAY, 1961 Date, Map: APRIL, 1964  
Photo No: 729 Scale: 1"=400'

156 IMPERIAL, A.B. SMITH CO., PGH., PA. H1244-1782