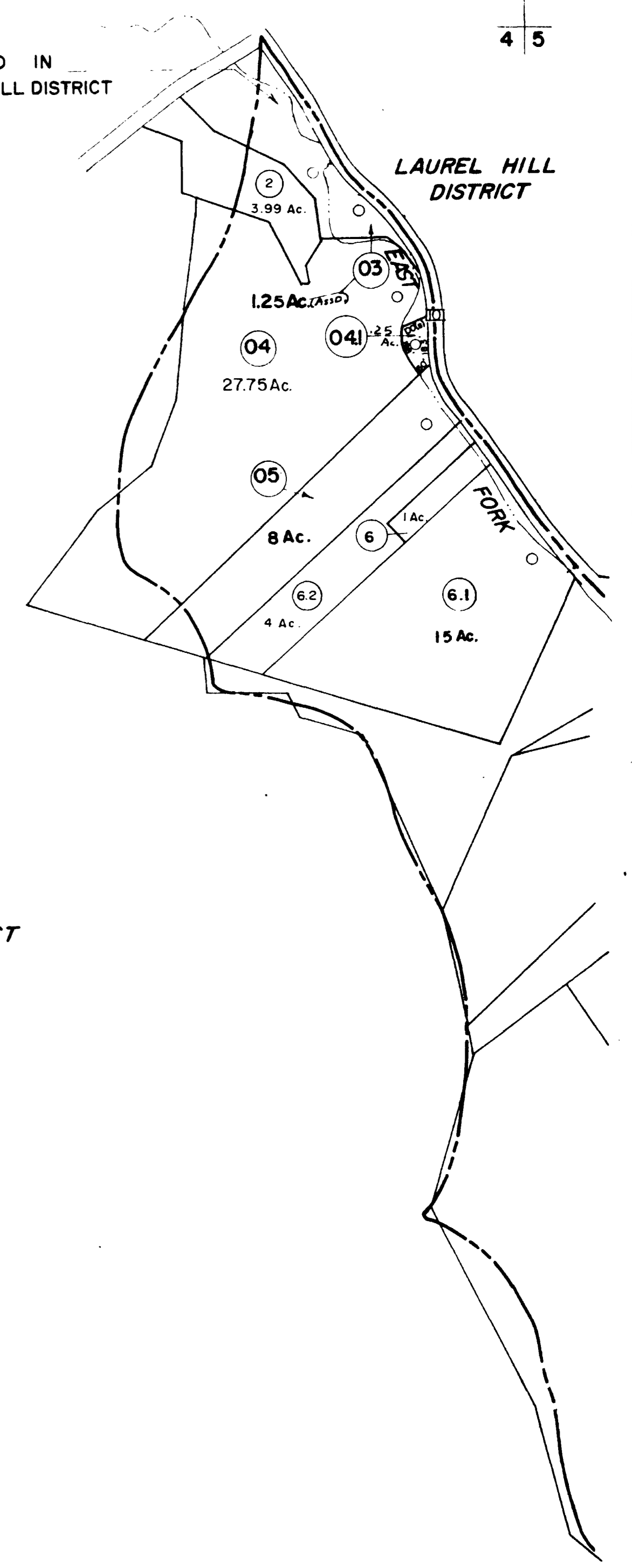


TAXED IN  
LAUREL HILL DISTRICT

4 5



LAUREL HILL DISTRICT

P/O 11-02  
217 Total Ac.

4 5  
10 11

FOR TAX PURPOSES ONLY

Prepared by  
**L. ROBERT KIMBALL**  
Consulting Engineer  
Ebensburg, Pennsylvania

Legend	
Property line	Original lot line
Edge of pavement or roadway	Deed lot number in parenthesis (15)
Corporation line	Parcel or index number in circle (15)
District line	Improvement
County line	Railroad

Revisions

No.	Date	Description	By	No.	Date	Description	By
1	REVISED 5/13/65			17			
2	Nicely 8-27-74	T.G.		18			
3	Gunnage 6/20/76	T.G.		19			
4	Revised 2-7-81			20			
5	7-1-84	LES		21			
6	7/1/87	C.P.		22			
7				23			
8	O.G.I.S 7-1-96	J.E.B.		24			

STATE OF WEST VIRGINIA  
COUNTY OF LINCOLN  
Office of Assessor

HARTS CREEK DISTRICT  
SHEET 04

Date, Aerial Photography: MAY, 1964 Date, Map: APRIL, 1964  
Photo No: 675 Scale: 1"=400'