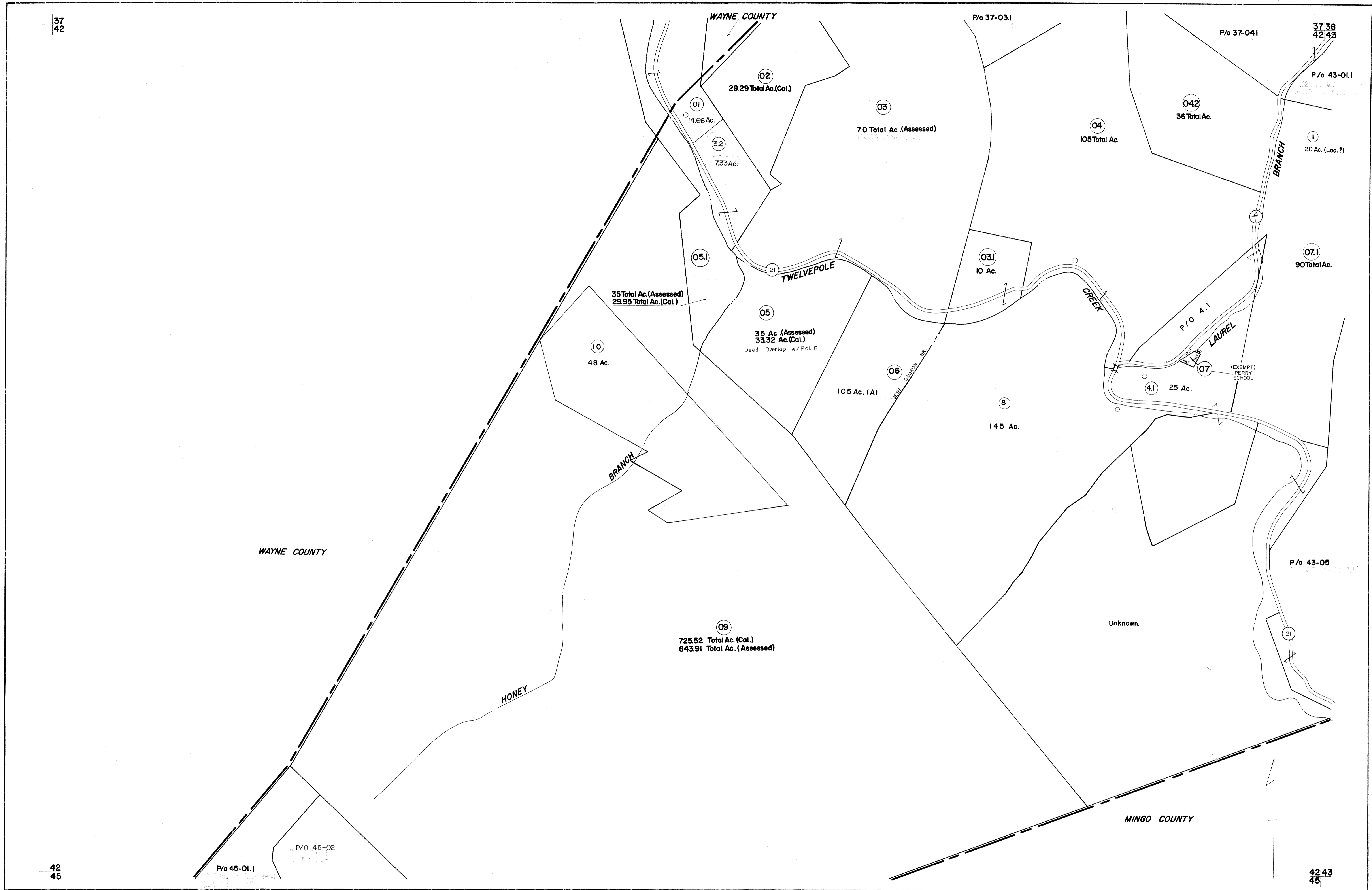


37
42

42
45



FOR TAX PURPOSES ONLY

Prepared by
L. ROBERT KIMBALL
Consulting Engineer
Ebensburg, Pennsylvania

Legend	
Property line	Original lot line
Edge of pavement or roadway	Deed lot number in parenthesis (15)
Corporation line	Parcel or index number in circle (10)
District line	Improvement
County line	Railroad

Revisions	
1	8-28-74 Nicely BS 9
2	Revised to 7-81 10
3	7-1-84 L.E.S. 11
4	10/1/85 12
5	to 7/1/87 C.P. 13
6	Revised to 7-1-87 14
7	Revised to 7-1-87 15
8	11-19-03 HD 16
9	
10	
11	
12	
13	
14	
15	
16	
17	
18	
19	
20	
21	
22	
23	
24	

STATE OF WEST VIRGINIA
COUNTY OF LINCOLN

Office of Assessor

HARTS CREEK DISTRICT
SHEET 42

Date, Aerial Photography: MAY, 1964
Photo No: 634
Date, Map: APRIL, 1964
Scale: 1"=400'

156 INFERIAL, A.S.M. SMITH CO., FGH., PA., HD24-102