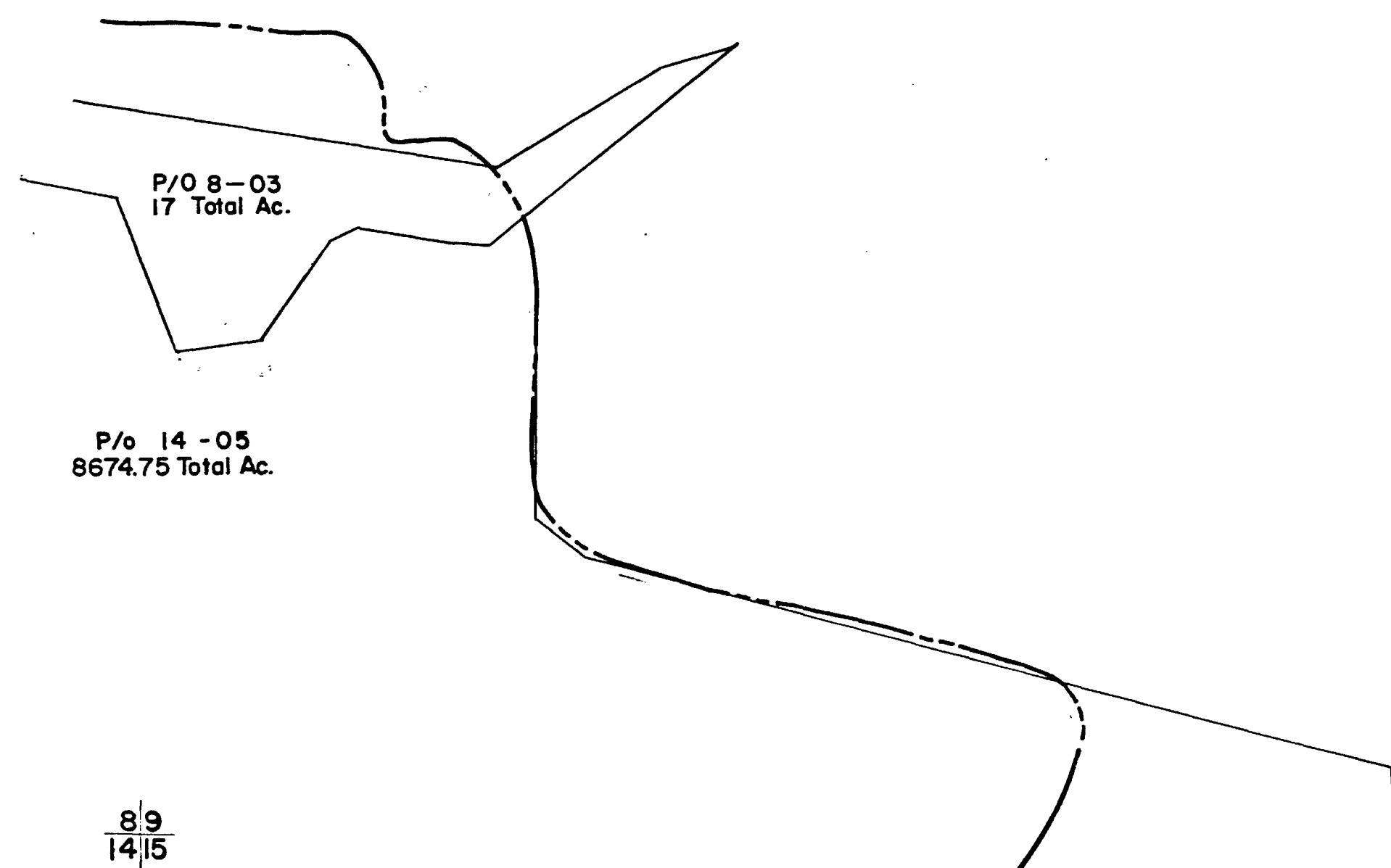


JEFFERSON DISTRICT



FOR TAX PURPOSES ONLY

Prepared by  
**L. ROBERT KIMBALL**  
 Consulting Engineer  
 Ebensburg, Pennsylvania

Legend

Property line	-----	Original lot line	.....
Edge of pavement or roadway	-----	Dead lot number in parenthesis	(15)
Corporation line	-----	Parcel or index number in circle	(99)
District line	-----	Improvement	○
County line	-----	Railroad	+

Revisions

1	REVISED 5/13/65	9	17
2	REVISION TO 1-81	10	18
3	7-1-84 L.E.S.	11	19
4		12	20
5		13	21
6		14	22
7		15	23
8		16	24

STATE OF WEST VIRGINIA  
 COUNTY OF LINCOLN

Office of Assessor

MAPPERS COMPANY

HARTS CREEK DISTRICT  
 SHEET 09

Date, Aerial Photography: MAY, 1961 Date, Map:  
 Photo No: Scale: 1"=400'