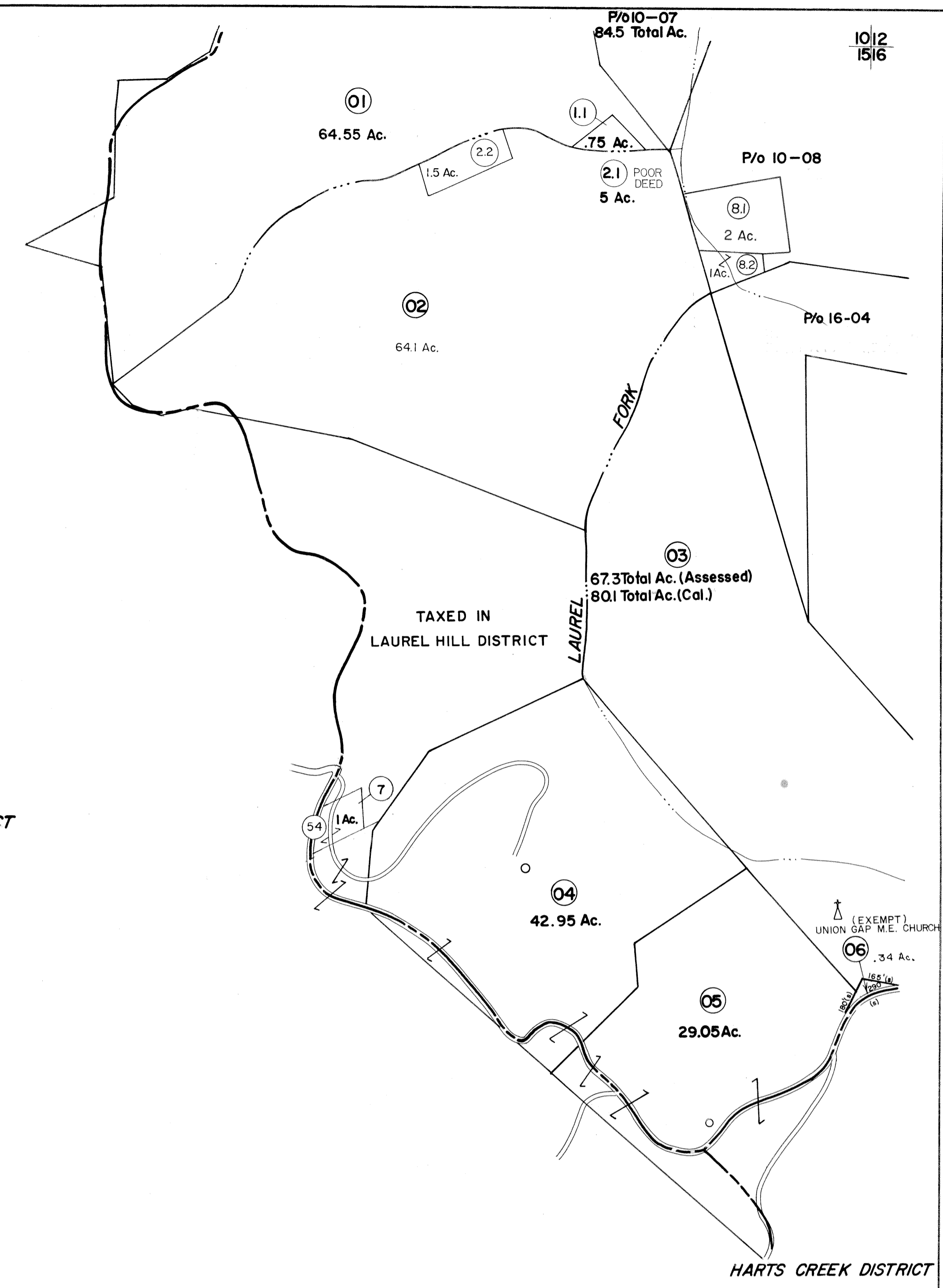


10
15

1012
1516



LAUREL HILL DISTRICT

HARTS CREEK DISTRICT

1516
20

FOR TAX PURPOSES ONLY

Prepared by
L. ROBERT KIMBALL
Consulting Engineer
Ebensburg, Pennsylvania

Legend	
Property line	Original lot line
Edge of pavement or roadway	Deed lot number in parenthesis (15)
Corporation line	Parcel or index number in circle (01)
District line	Improvement
County line	Railroad

Revisions	
1	11/5/75
2	Revised to 7-81
3	July 1988
4	To 7/1/87 C.P.
5	SBH 11/10/03
6	
7	
8	

STATE OF WEST VIRGINIA
COUNTY OF LINCOLN
Office of Assessor

JEFFERSON DISTRICT
SHEET 15

Date, Aerial Photography: MAY, 1961 Date, Map: Aug., 1964
Photo No: 616 Scale: 1"=400'

135 IMPERIAL, A.S.M. SMITH CO., P.O.H., PA. 17244-1702