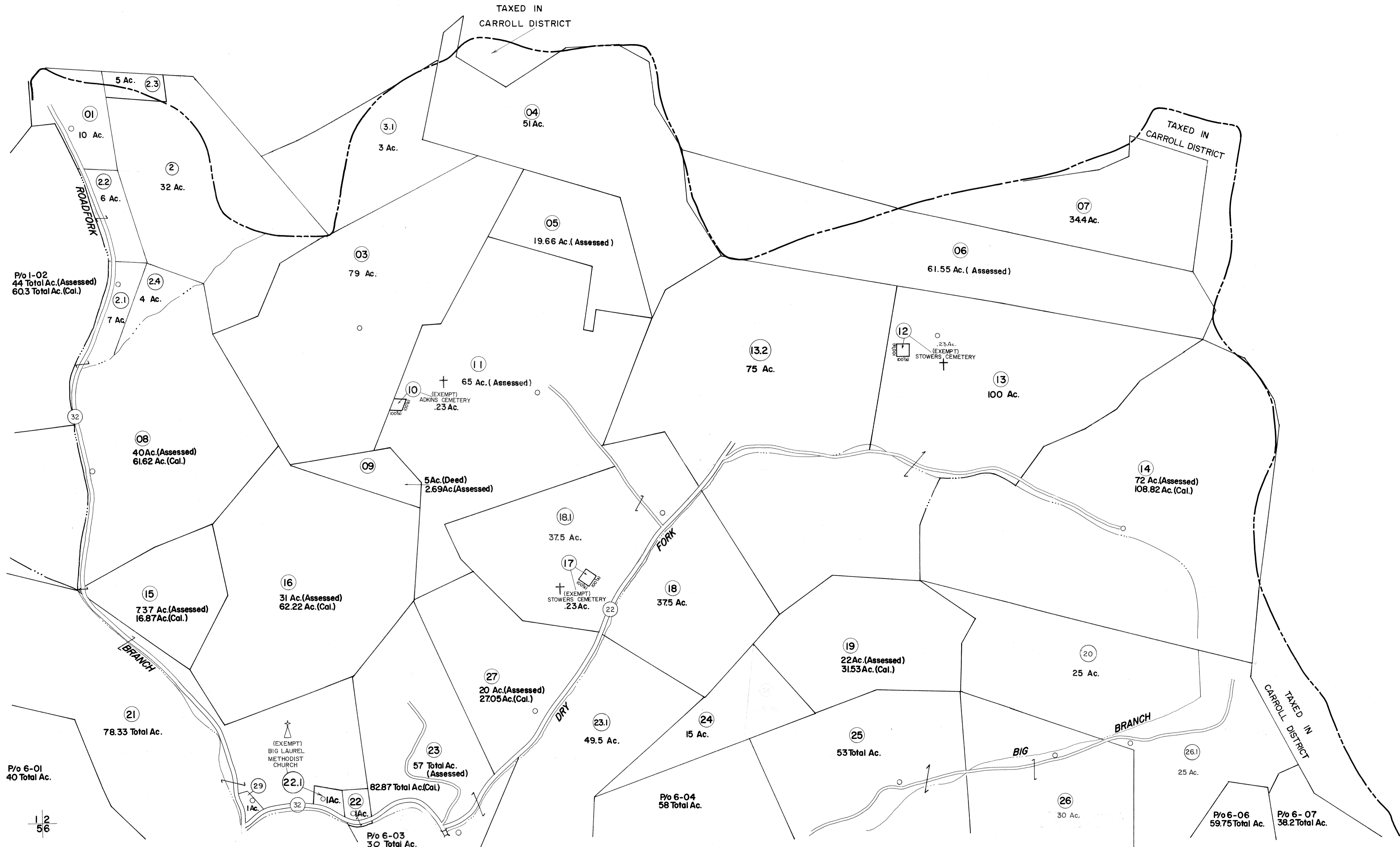


CARROLL DISTRICT



FOR TAX PURPOSES ONLY

Prepared by  
**L. ROBERT KIMBALL**  
 Consulting Engineer  
 Ebensburg, Pennsylvania

**Legend**

Property line	Original lot line	Dead lot number in parenthesis (15)
Edge of pavement or roadway	Parcel or index number in circle (29)	Improvement
Corporation line	Improvement	Railroad
District line		
County line		

**Revisions**

1	REVISED 5/7/65	9	
2	7-25-75	10	J.C.
3	11-6-75	11	T.G.
4	Revised to 7-81	12	S.H.
5	REVISED TO 7-1-83	13	
6	July 1985	14	TR
7	7/1/87 C.P.	15	
8	7-1-89	16	TR

STATE OF WEST VIRGINIA  
 COUNTY OF LINCOLN  
 Office of Assessor

UNION DISTRICT  
 SHEET 02

Date, Aerial Photography: MAY, 1964  
 Photo No: 612  
 Date, Map: MAY, 1964  
 Scale: 1"=400'