

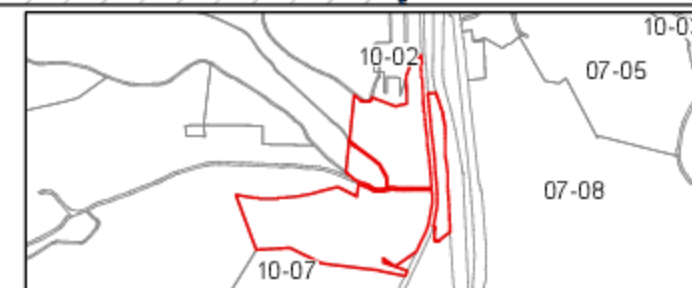
FOR TAX PURPOSES ONLY
Prepared by Lincoln County, WV

Legend

Property Line	Original Lot Line
Road Right of Way	Lot Number (15)
Corporation Line	Parcel Number (99)
District Line	Water
County Line	Railroad

R	1	Revised 5/12/85	9	17
e	2	Revised 7/1/81	10	18
v	3	Revised 7/1/84	11	19
f	4	Revised 7/1/87	12	20
s	5	Revised 7/1/88	13	21
j	6	Revised 7/1/88	14	22
o	7	Revised 7/1/88	15	23
n	8	Revised 11/20/2016	16	24
s				

STATE OF WEST VIRGINIA
COUNTY OF LINCOLN
Office of Assessor



WEST HAMLIN CORPORATION
SHEET 06
Date, Aerial Photography: 2003
Created: 2/1/2017
Scale: 1" = 100'