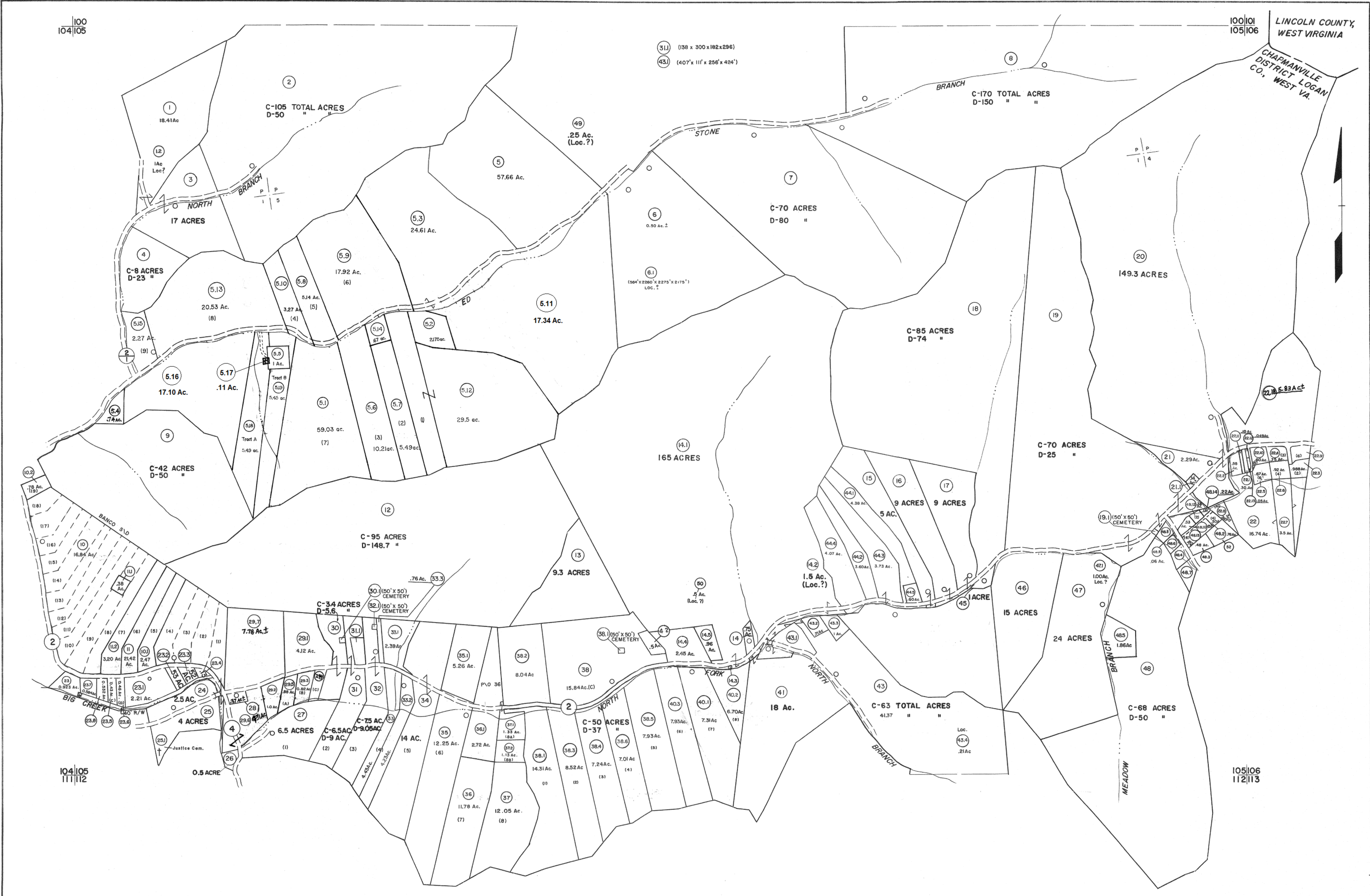


100
104|105

100|101
105|106 LINCOLN COUNTY,
WEST VIRGINIA



For Tax Purposes Only
 Prepared by
MICHAEL BAKER, JR., INC.
 Consulting Engineers
 Rochester, Pennsylvania

Legend	
Property line	-----
Edge of pavement or roadway	-----
Corporation line	-----
District line	-----
County line	-----
Original lot line	-----
Dead lot number	(15)
Parcel or index number	(9)
Improvement	-----
Railroad	-----

Revisions			
1	4-1-64	9	7-1-02 TO 7-1-04 L.S.S
2	2-78	10	4-15-08 H.A.S
3	REV TO 1-1-83	11	3/6/10 SBH
4	Revised to 7-1-84	12	11-9-12 H.A.S
5	REV TO 7-1-86	13	8-19-16 M.C./J.T.
6	7-1-88	14	11-16
7	9-1-97	15	
8	7-1-2000	16	

KEY MAP

LOGAN COUNTY
 STATE OF WEST VIRGINIA
 Office of Assessor

DISTRICT
GUYAN
 SHEET NO: 105
 Date, Aerial Photography: November, 1962 Date, Map: April, 1963
 Photo No: Scale: 1" = 400'