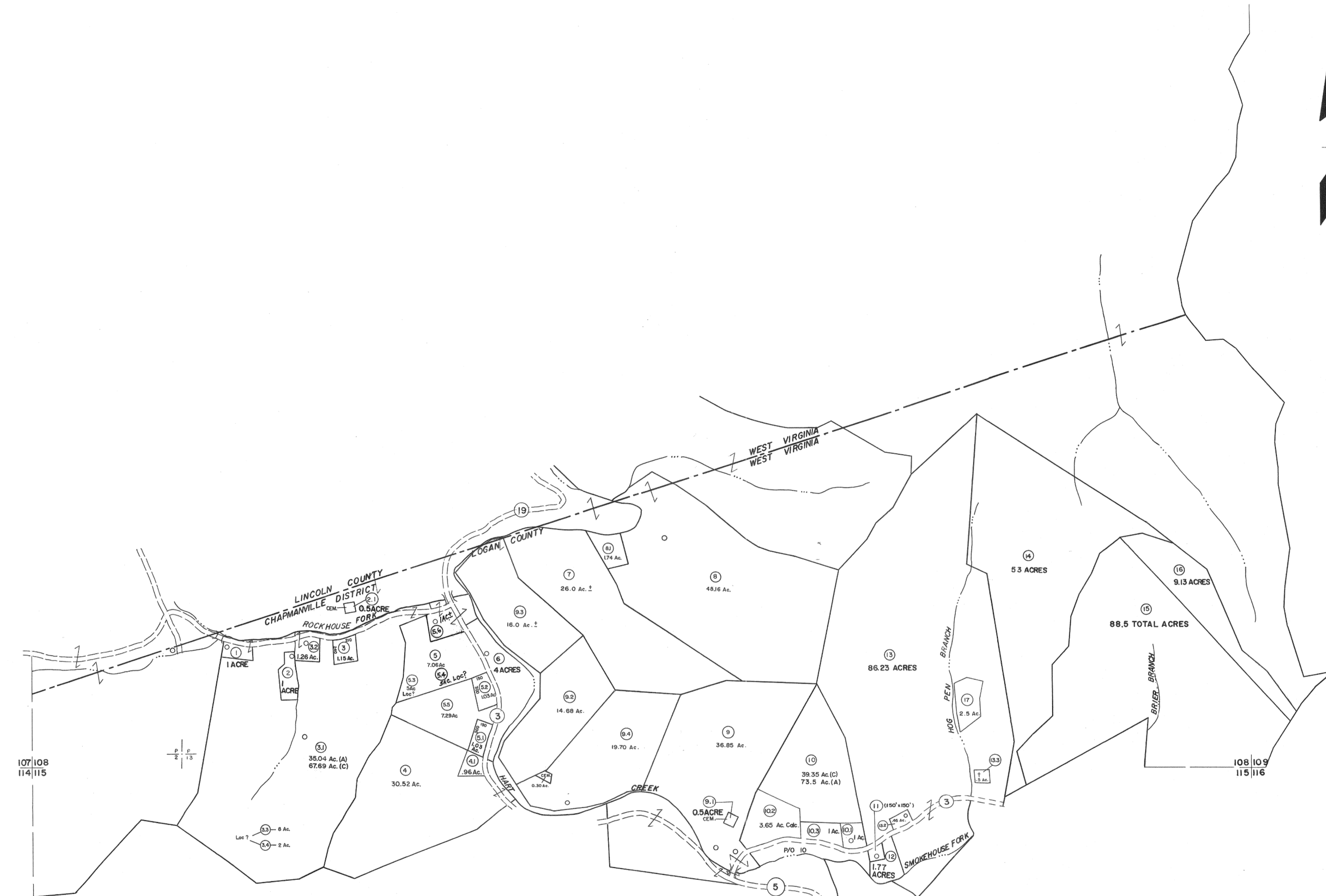


107 108

102
108 109



107 108
114 115

108 109
115 116

For Tax Purposes Only
 Prepared by
MICHAEL BAKER, JR., INC.
 Consulting Engineers
 Rochester, Pennsylvania

Legend	
Property line	—
Edge of pavement or roadway	—
Corporation line	—
District line	—
County line	—
Original lot line	—
Deed lot number	(15)
Parcel or index number	(99)
Improvement	○
Railroad	—

Revisions	
1	4-1-64
2	REV. TO 1-1-83 NCS
3	REV. TO 7-1-84 J.E.B.
4	REV. TO 7-1-86 NCS
5	7-1-88 TRL
6	9-1-97 J.E.B.
7	7-1-02 TO 7-1-04 L.S.S.
8	3/6/10 S&H

KEY MAP

LOGAN COUNTY
 STATE OF WEST VIRGINIA
 Office of Assessor

DISTRICT
GUYAN
SHEET NO: 108
 Date, Aerial Photography: November, 1962 Date, Map: April, 1963
 Photo No: Scale: 1" = 400'