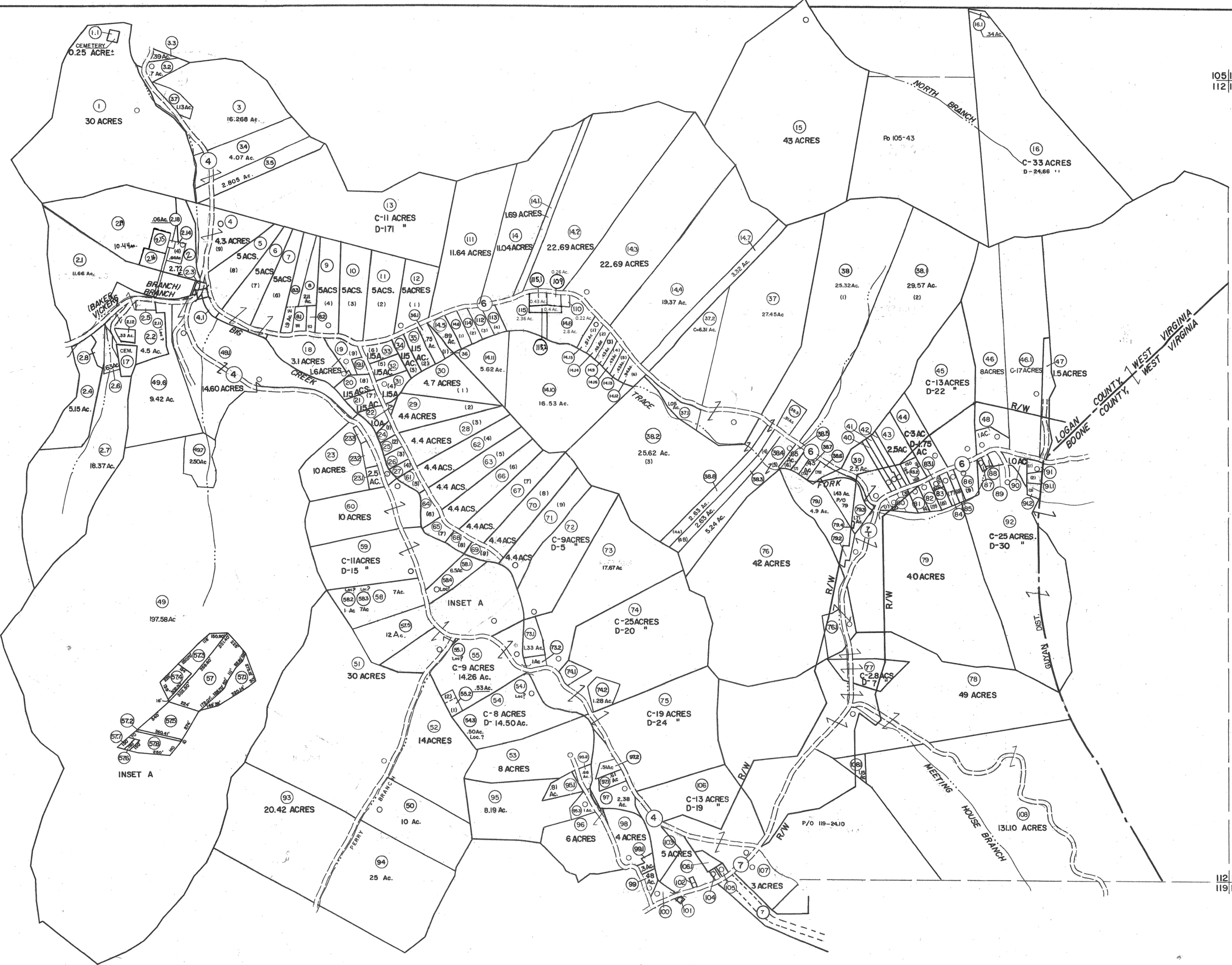


- 91 .33 Ac.
- 91.1 (85 x 151.78 x 53.06 x 68.22 x 134.7) .33 Ac.
- 91.2 (134.7 x 123.31 x 96.68 x 122.23) .33 Ac.
- 17 (189.46 x 189.85 x 105.67 x 92.85 x 28.0)
- 24 (132' x 165' 85' 85')
- 25 (144.4 x 180 x 110 x 165)
- 26 (114.4 x 195 x 120 x 180)
- 27 (100' x 210' x 108' x 195)
- 40 (50' x 500' x 50' x 535')
- 41 (50' x 535' x 50' x 352' x 115')
- 42 (50' x 550' x 352' x 50' x 535')
- 61 (208.5 x 75 x 276 x 29)
- 64 (274.5 x 188 x 334 x 78)
- 65 (174.4 x 135 x 249 x 188)
- 68 (176 x 155 x 220 x 135)
- 69 (286.6 x 35 x 291.7 x 250)
- 80 (319 x 243 x 350 x 2)
- 81 (100' x 289' x 105' x 243')
- 82 (100' x 295' x 105' x 269')
- 83 (100' x 191' x 100' x 195)
- 84 (175 x 287.75 x 291')
- 85 (60 x 285 x 160 x 287')
- 86 (225 x 300 x 130 x 285')
- 87 (50' x 120')
- 88 (60 x 112 x 92 x 90)
- 89 (95 x 165 x 43 x 112)
- 100 (250' x 70' x 180' x 210')
- 101 (55.2 x 57 x 56.7 x 34.6 x 45.5)
- 102 (40' x 100')
- 104 (50' x 100')
- 105 (75' x 100')
- 106 (157' x 200' x 64' x 200')
- 109 (100' x 120')
- 110 (92' x 100' x 60' x 71')
- 41 (145' x 50' x 150' x 95')
- 19.1 (165' x 164' x 202' x 153.5')
- 232 (15' x 325' x 285' x 236')
- 233 (211' x 102' x 218' x 50')
- 74.1 (125' x 155' x 250' x 225')
- 2.3 .08486 Ac.
- 2.5 .187965 Ac.



For Tax Purposes Only
 Prepared by
MICHAEL BAKER, JR., INC.
 Consulting Engineers
 Rochester, Pennsylvania

Legend

Property line	—	Original lot line	—
Edge of pavement or roadway	—	Deed lot number	(15)
Corporation line	—	Parcel or index number	(99)
District line	—	Improvement	○
County line	—	Railroad	—

Revisions

1	4-1-64	9	7-1-02 TO 7-1-04 L.S.B	17
2	2-78	10	4-15-08	18
3	REV. TO 1-1-83	11	3/5/10	19
4	7-1-85	12	11-7-12	20
5	7-1-88	13	2-23-13	21
6	7-1-88	14	2/25/15	22
7	9-1-97	15	11-16	23
8	7-1-2000	16		24

KEY MAP
 105
 111 112 113
 119

LOGAN COUNTY
 STATE OF WEST VIRGINIA
 Office of Assessor

DISTRICT
GUYAN
SHEET NO:112
 Date, Aerial Photography: November, 1962 Date, Map: April, 1963
 Photo No: Scale: 1" = 400'