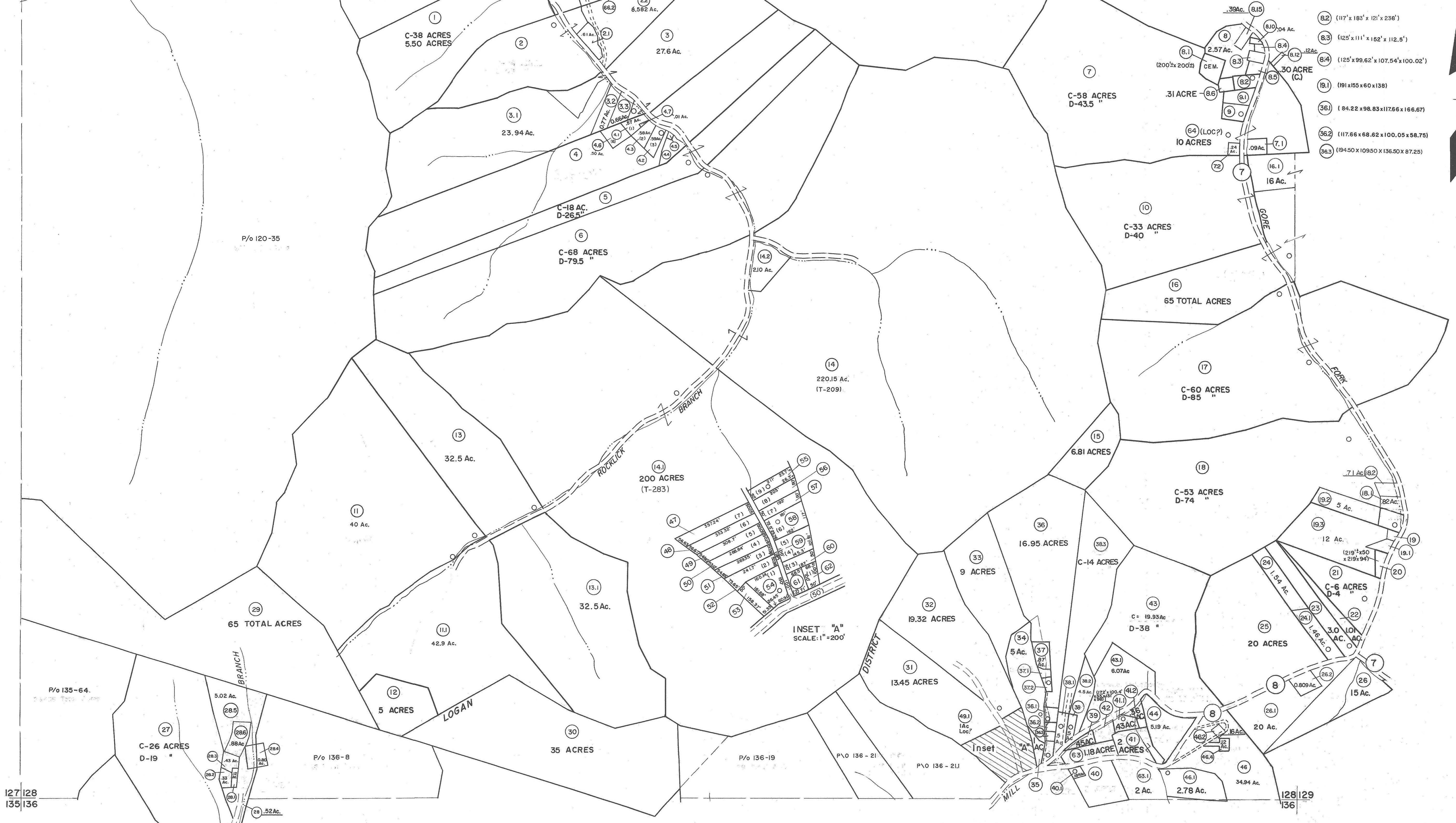


119|120
127|128

120|121
128|129



127|128
135|136

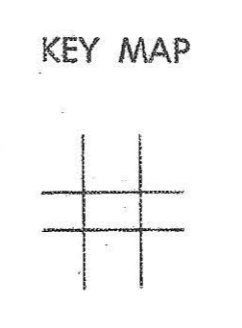
128|129
136

For Tax Purposes Only

Prepared by
MICHAEL BAKER, JR., INC.
 Consulting Engineers
 Rochester, Pennsylvania

Legend	
Property line	—
Edge of pavement or roadway	—
Corporation line	—
District line	—
County line	—
Original lot line	—
Dead lot number	(15)
Parcel or index number	(16)
Improvement	—
Railroad	—

Revisions			
1	4-1-64	9	7-1-02 TO 7-1-04 L.S.S.
2	2-78	10	4-15-08 HHS
3	To 1-1-83 C.P.	11	3/2/10 S&H
4	To JULY 1, 1983 C.P.	12	7-14-11 H&S
5	Revised to 7-1-84	13	11-7-12 H&S
6	REV. TO 7-1-88	14	2/25/15 S&H
7	8-1-97	15	
8	7-1-2000	16	



LOGAN COUNTY
 STATE OF WEST VIRGINIA
 Office of Assessor

DISTRICT **GUYAN**

SHEET NO: 128

Date, Aerial Photography: November 1962 Date, Map: April 1963
 Photo No. Scale: 1" = 400'