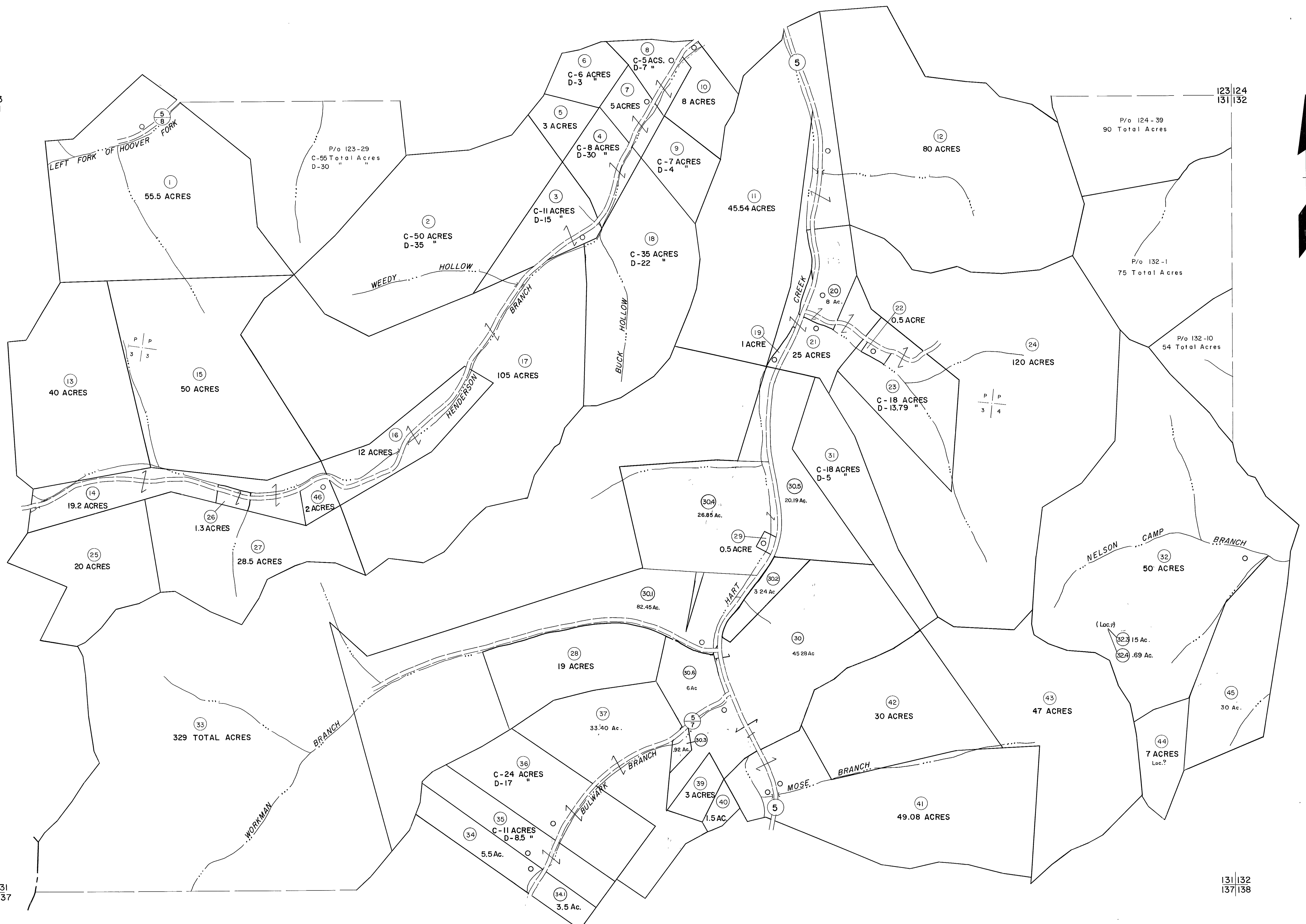


122|23
130|131

123|24
131|132

130|131
137

131|132
137|138



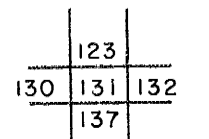
Legend

Property line	—	Original lot line	---
Edge of pavement or roadway	—	Deed lot number	(15)
Corporation line	---	Parcel or index number	(29)
District line	---	Improvement	o
County line	---	Railroad	—+—

Revisions

1	4-1-64	9	17
2	To 1-1-83 C.P.	10	18
3	Revised to 7-1-84	11	19
4	REV. TO 7-1-86 NCS	12	20
5	REV. TO 7-1-88 NCS	13	21
6	7-1-02 TO 7-1-04 L.S.	14	22
7	3/2/10 SBH	15	23
8	7-1-11	16	24

KEY MAP



LOGAN COUNTY
STATE OF WEST VIRGINIA
Office of Assessor

DISTRICT **GUYAN**

SHEET NO: 131

Date, Aerial Photography: November, 1962 Date, Map: April, 1963
Photo No. Scale: 1" = 400'

For Tax Purposes Only
Prepared by
MICHAEL BAKER, JR., INC.
Consulting Engineers
Rochester, Pennsylvania