

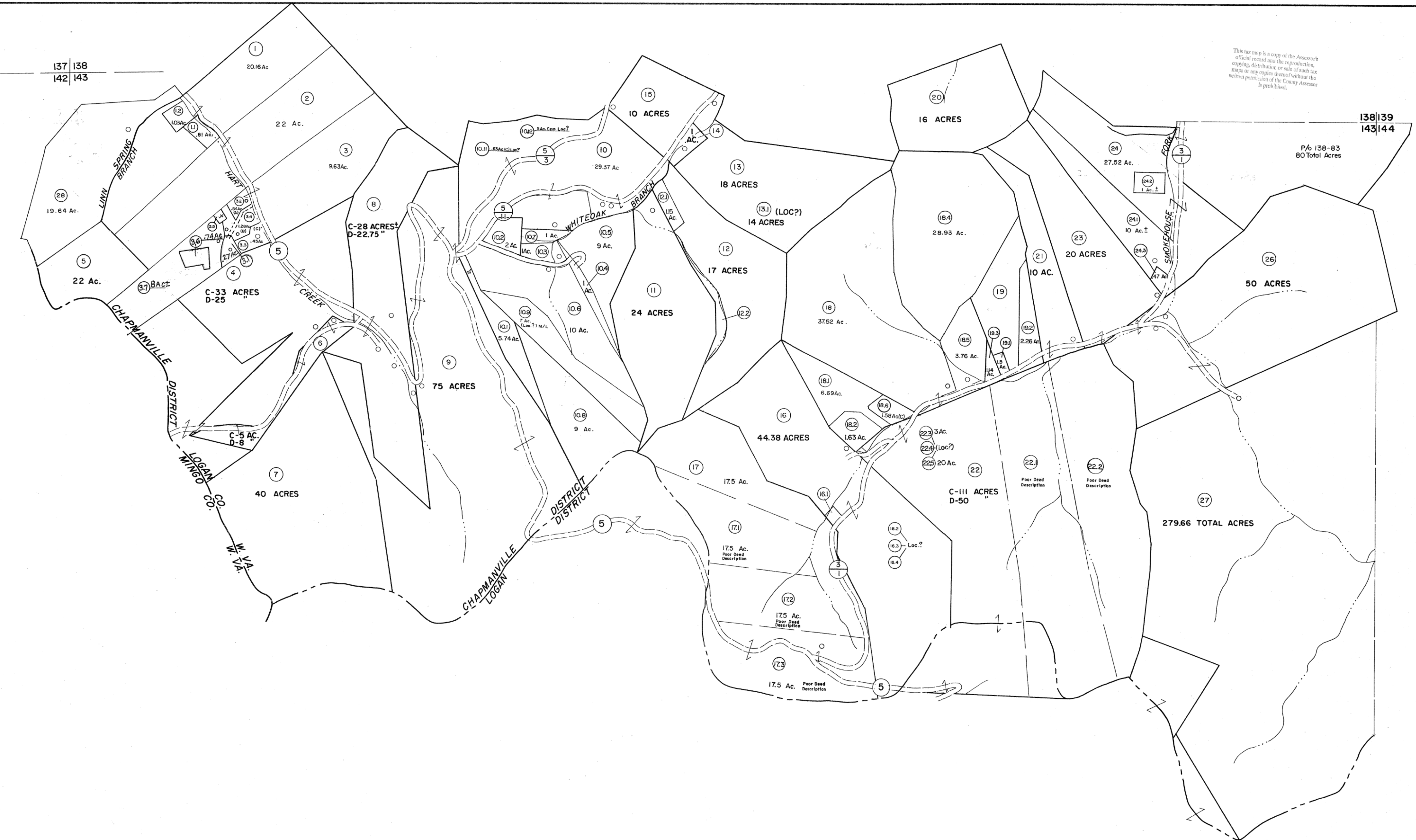
This tax map is a copy of the Assessor's official record and the reproduction, copying, distribution or sale of such map or any copies thereof without the written permission of the County Assessor is prohibited.

137|138
142|143

138|139
143|144

142|143

143|144
146



For Tax Purposes Only
Prepared by
MICHAEL BAKER, JR., INC.
Consulting Engineers
Rochester, Pennsylvania

Legend	
Property line	-----
Edge of pavement or roadway	-----
Corporation line	-----
District line	-----
County line	-----
Original lot line	-----
Dead lot number	(15)
Parcel or index number	(10)
Improvement	(10)
Railroad	-----

Revisions			
1	4-1-64	9	7-1-02 TO 7-1-04 L.S.S.
2	2-78	10	4-15-08 H&S
3	January 1983 M	11	4-28-16 D&MC
4	To 7-1-83 C.P.	12	11-16
5	Special to 7-1-84	13	
6	REV. TO 7-1-86 NCS	14	
7	REV. TO 7-1-88 NCS	15	
8	8-1-97 J.E.B	16	

KEY MAP
138
142|143|144

LOGAN COUNTY
STATE OF WEST VIRGINIA
Office of Assessor

DISTRICT **GUYAN**
SHEET NO: 143
Date, Aerial Photography: November, 1962 Date, Map: April, 1963
Photo No: Scale: 1" = 400'