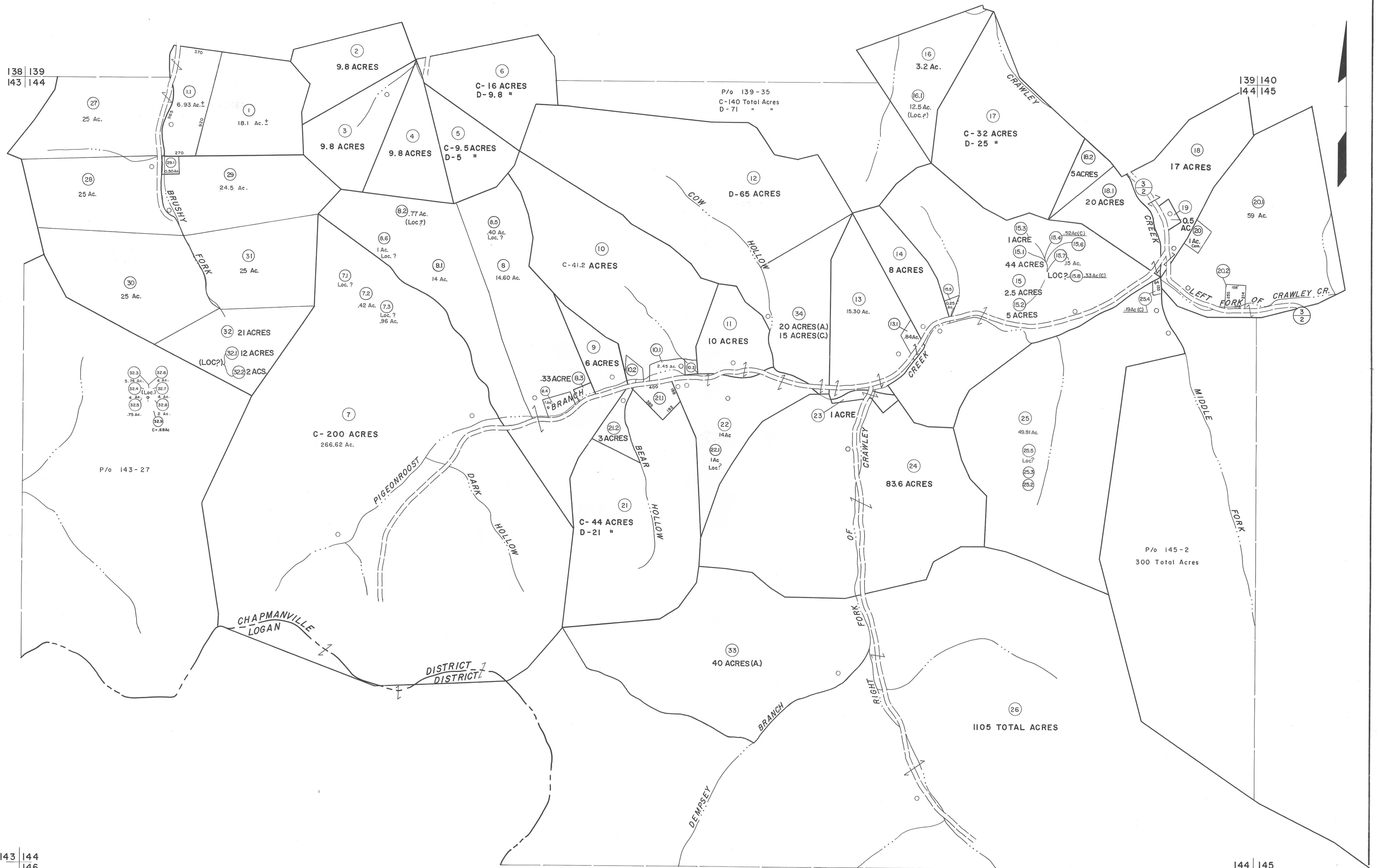


138 | 139
143 | 144

139 | 140
144 | 145

143 | 144
146

144 | 145
146 | 147



For Tax Purposes Only

Prepared by
MICHAEL BAKER, JR., INC.
Consulting Engineers
Rochester, Pennsylvania

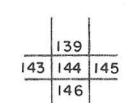
Legend

Property line	—	Original lot line	---
Edge of pavement or roadway	—	Dead lot number	(15)
Corporation line	—	Parcel or index number	(99)
District line	---	Improvement	○
County line	---	Railroad	—+—

Revisions

1	4-1-64	9	7-1-02 TO 7-1-04 L.S.S.	17
2	2-78	10	4-15-08 H&S	18
3	January 1989	11	11-6-08 H&S	19
4	To 7-1-83 C.P.	12	2/27/10 S&H	20
5	Revised to 7-1-84	13	11-8-12 H&S	21
6	REV. TO 7-1-86	14		22
7	REV. TO 7-1-88	15		23
8	8-1-97	16		24

KEY MAP



LOGAN COUNTY
STATE OF WEST VIRGINIA
Office of Assessor

DISTRICT

GUYAN

SHEET NO: 144

Date, Aerial Photography: November, 1962 Date, Map: April, 1963
Photo No: Scale: 1" = 400'