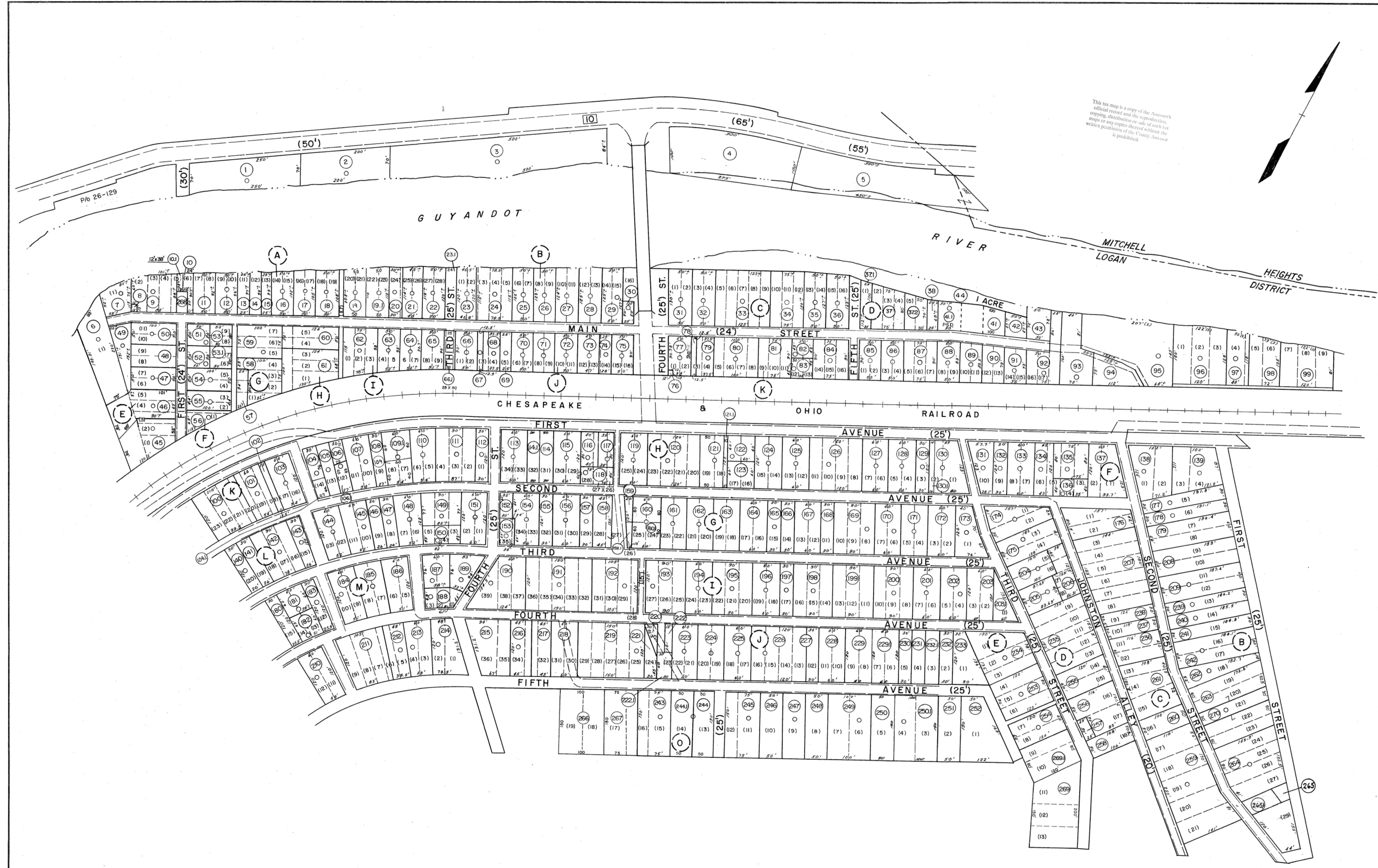
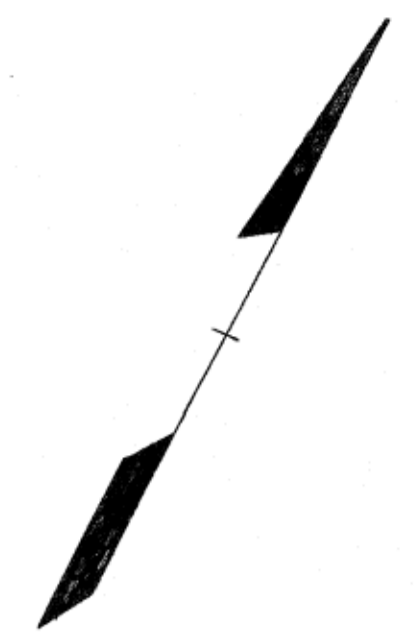


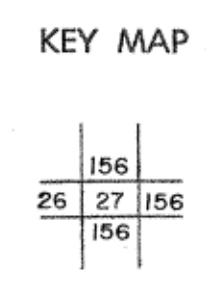
This tax map is a copy of the Assessor's official record and the reproduction, copying, distribution or sale of such maps or any copies thereof without the written permission of the County Assessor is prohibited.



**For Tax Purposes Only**  
 Prepared by  
**MICHAEL BAKER, JR., INC.**  
 Consulting Engineers  
 Rochester, Pennsylvania

Legend	
Property line	Original lot line
Edge of pavement or roadway	Deed lot number (15)
Corporation line	Parcel or index number (99)
District line	Improvement (O)
County line	Railroad

Revisions	
1 4-1-64	9 7-1-02 TO 7-1-04 L.S.S.
2 2-14-78 T.G.	10 4-15-08 H.S.
3 Revised to 1-1-83	11 2/24/10 S.B.H.
4 7-1-85 L.S.	12
5 Revised to 7-1-81	13
6 7-1-86 S.P.H.	14
7 Revised to 7-1-88 R.E.B.	15
8 9-1-97 J.E.B.	16



**LOGAN COUNTY**  
 STATE OF WEST VIRGINIA  
 Office of Assessor

DISTRICT  
**GUYAN (HENLAWSON)**  
 SHEET NO: 27  
 Date, Aerial Photography: Nov., 1962 Date, Map: April, 1963  
 Photo No: 347-3-8 Scale: 1" = 100'