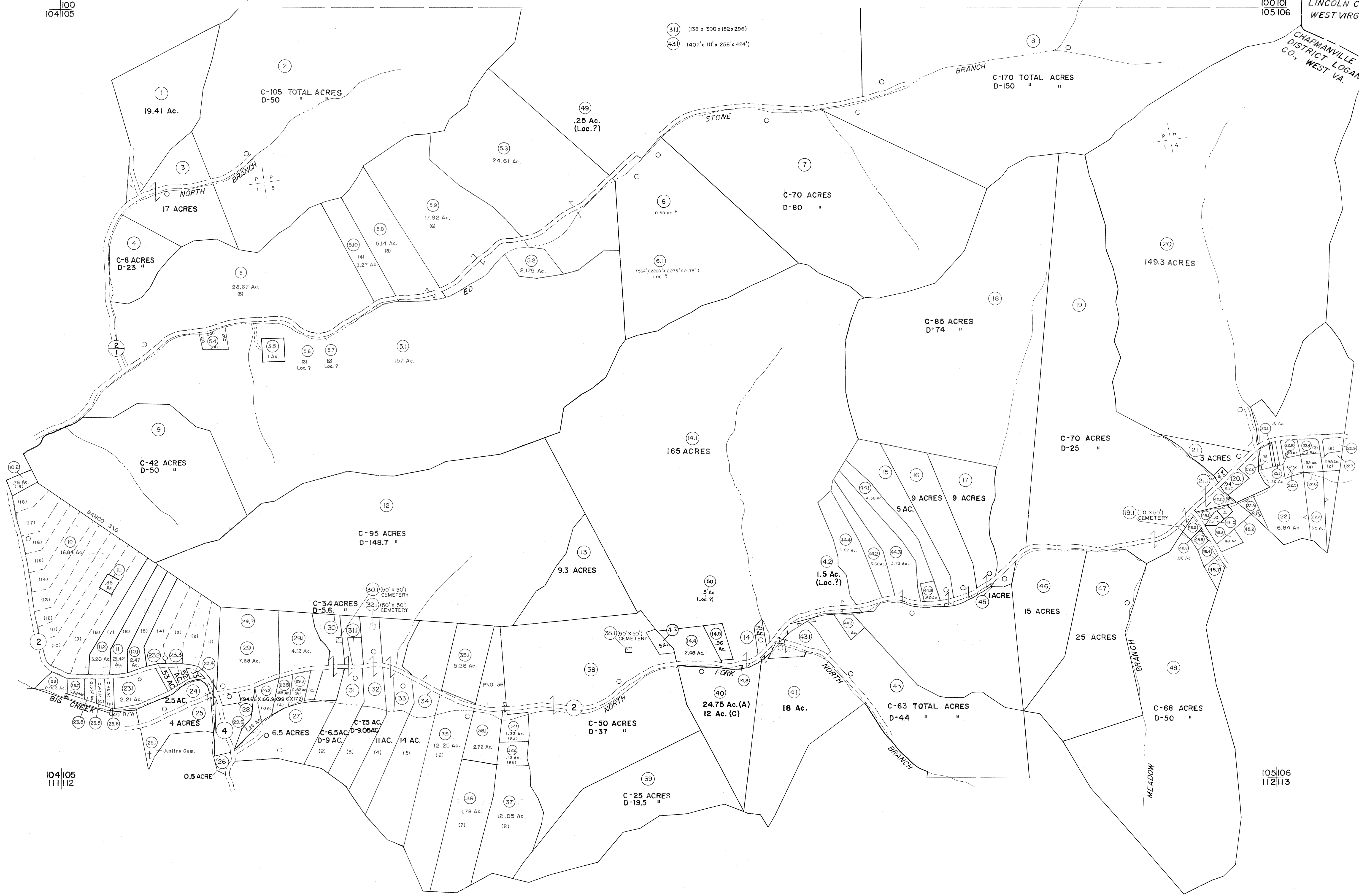


100
104|105

100|101
105|106

LINCOLN COUNTY,
WEST VIRGINIA

CHAPMANVILLE
DISTRICT LOGAN
CO., WEST VA.



104|105
111|112

105|106
112|113

For Tax Purposes Only

Prepared by
MICHAEL BAKER, JR., INC.
Consulting Engineers
Rochester, Pennsylvania

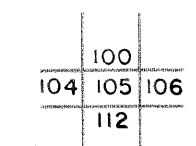
Legend

Property line	—	Original lot line	—
Edge of pavement or roadway	—	Dead lot number	(15)
Corporation line	—	Parcel or index number	(16)
District line	—	Improvement	(17)
County line	—	Railroad	(18)

Revisions

1	4-1-64	9	7-1-02 TO 7-1-04 L.S.S	17
2	2-78	10		18
3	REV. TO 1-1-83	11	NCS	19
4	Revised to 7-1-84	12		20
5	REV. TO 7-1-86	13	NCS	21
6	7-1-88	14	TRL	22
7	9-1-97	15	J.E.B	23
8	7-1-2000	16	J.E.B	24

KEY MAP



LOGAN COUNTY
STATE OF WEST VIRGINIA
Office of Assessor

DISTRICT

GUYAN

SHEET NO: 105

Date, Aerial Photography November 1962 Date, Map April 1963
Photo No: Scale: 1" = 400'