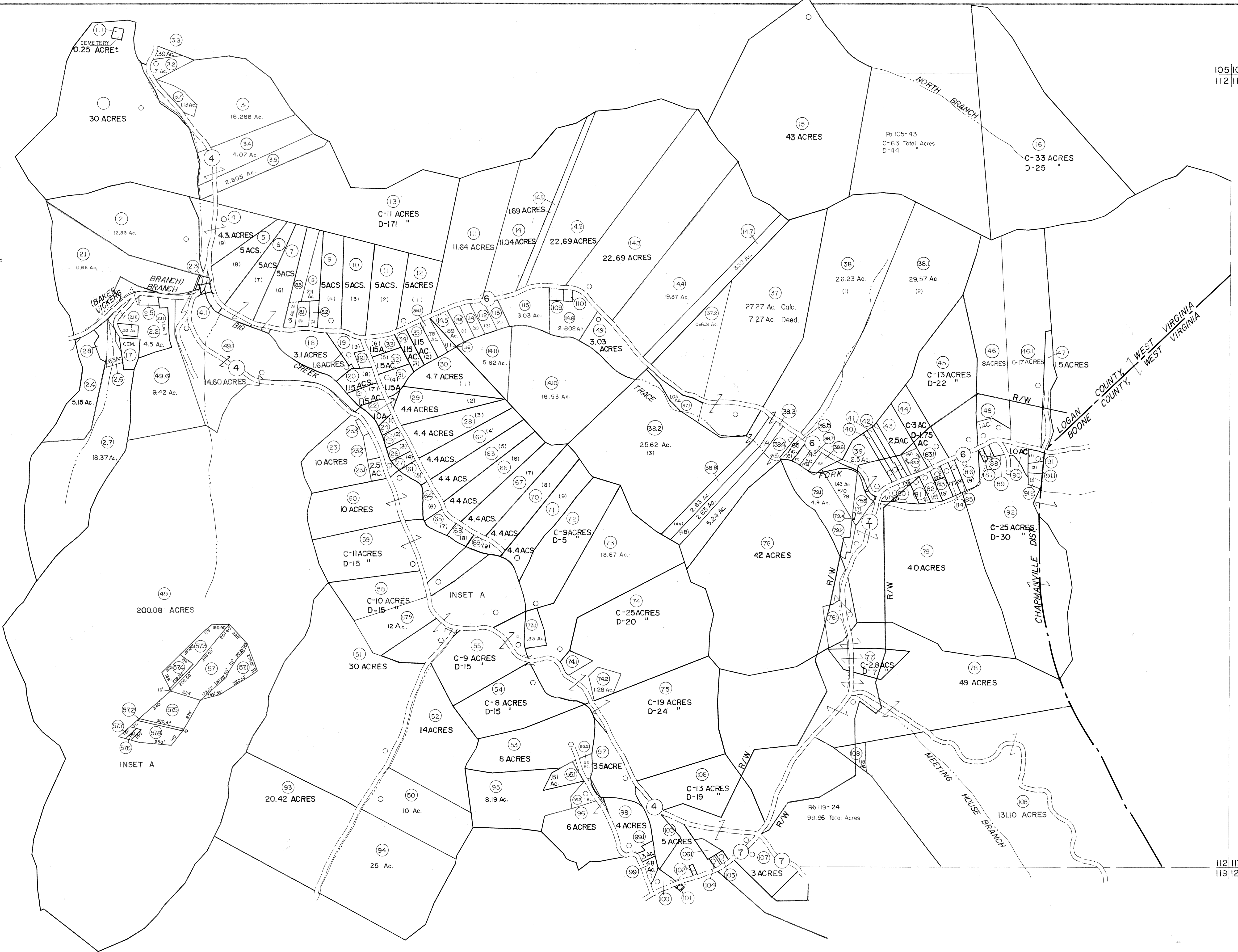


- 91 .33 Ac.
- 91.1 (85 x 13178 x 53.06 x 68.22 x 134.7) .33 Ac.
- 91.2 (134.7 x 123.31 x 96.68 x 122.23) .33 Ac.
- 17 (189.46 x 169.85 x 103.67 x 92.85 x 280)
- 24 (132 x 165 x 85 x 58)
- 25 (144.4 x 180 x 10 x 165)
- 26 (114.4 x 195 x 120 x 160)
- 27 (100 x 210 x 108 x 195)
- 40 (50 x 500 x 50 x 535)
- 41 (50 x 535 x 50 x 352 x 1 x 158)
- 42 (50 x 198 x 1 x 352 x 50 x 535)
- 51 (208.5 x 75 x 276 x 210)
- 64 (274.5 x 188 x 334.6 x 75)
- 65 (174.4 x 135 x 249 x 188)
- 68 (176 x 155 x 220 x 135)
- 69 (286.6 x 35 x 291.7 x 155)
- 80 (319 x 243 x 350)
- 81 (100 x 269 x 105 x 243)
- 82 (100 x 295 x 105 x 269)
- 83 (100 x 191 x 100 x 195)
- 84 (75 x 287 x 75 x 291)
- 85 (60 x 285 x 60 x 287)
- 86 (225 x 300 x 130 x 285)
- 87 (50 x 120)
- 88 (60 x 112 x 52 x 90)
- 89 (95 x 165 x 43 x 112)
- 100 (250 x 70 x 180 x 210)
- 101 (55.2 x 57 x 56.7 x 34.6 x 45.5)
- 102 (40 x 100)
- 104 (50 x 100)
- 105 (75 x 100)
- 106 (157 x 200 x 64 x 200)
- 109 (100 x 120)
- 110 (92 x 100 x 60 x 71)
- 4.1 (145 x 50 x 150 x 93)
- 19.1 (165 x 164 x 202 x 153.5)
- 232 (53 x 325 x 255 x 236)
- 233 (211 x 102 x 218 x 50)
- 74.1 (125 x 155 x 250 x 225)
- 2.3 .06486 Ac.
- 2.5 .187565 Ac.

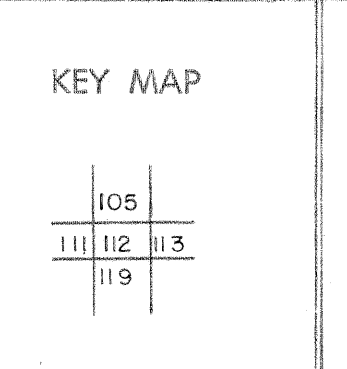


Legend

Property line	—	Original lot line	—
Edge of pavement or roadway	—	Dead lot number	(15)
Corporation line	—	Parcel or index number	(9)
District line	—	Improvement	—
County line	—	Railroad	—

Revisions

1	4-1-64		9	7-1-02 TO 7-1-04 L.S.S	17
2	2-78	P.W.	10		18
3	REV. TO 1-1-83	NCS	11		19
4	7-1-83	L.E.S	12		20
5	Revised to 7-1-84		13		21
6	7-1-88	TRL	14		22
7	9-1-97	J.E.B	15		23
8	7-1-2000	J.E.B	16		24



LOGAN COUNTY
STATE OF WEST VIRGINIA
Office of Assessor

DISTRICT
GUYAN

SHEET NO: 112

Date, Aerial Photography: November, 1962 Date, Map: April 1963
Photo No: Scale: 1" = 400'

For Tax Purposes Only

Prepared by
MICHAEL BAKER, JR., INC.
Consulting Engineers
Rochester, Pennsylvania