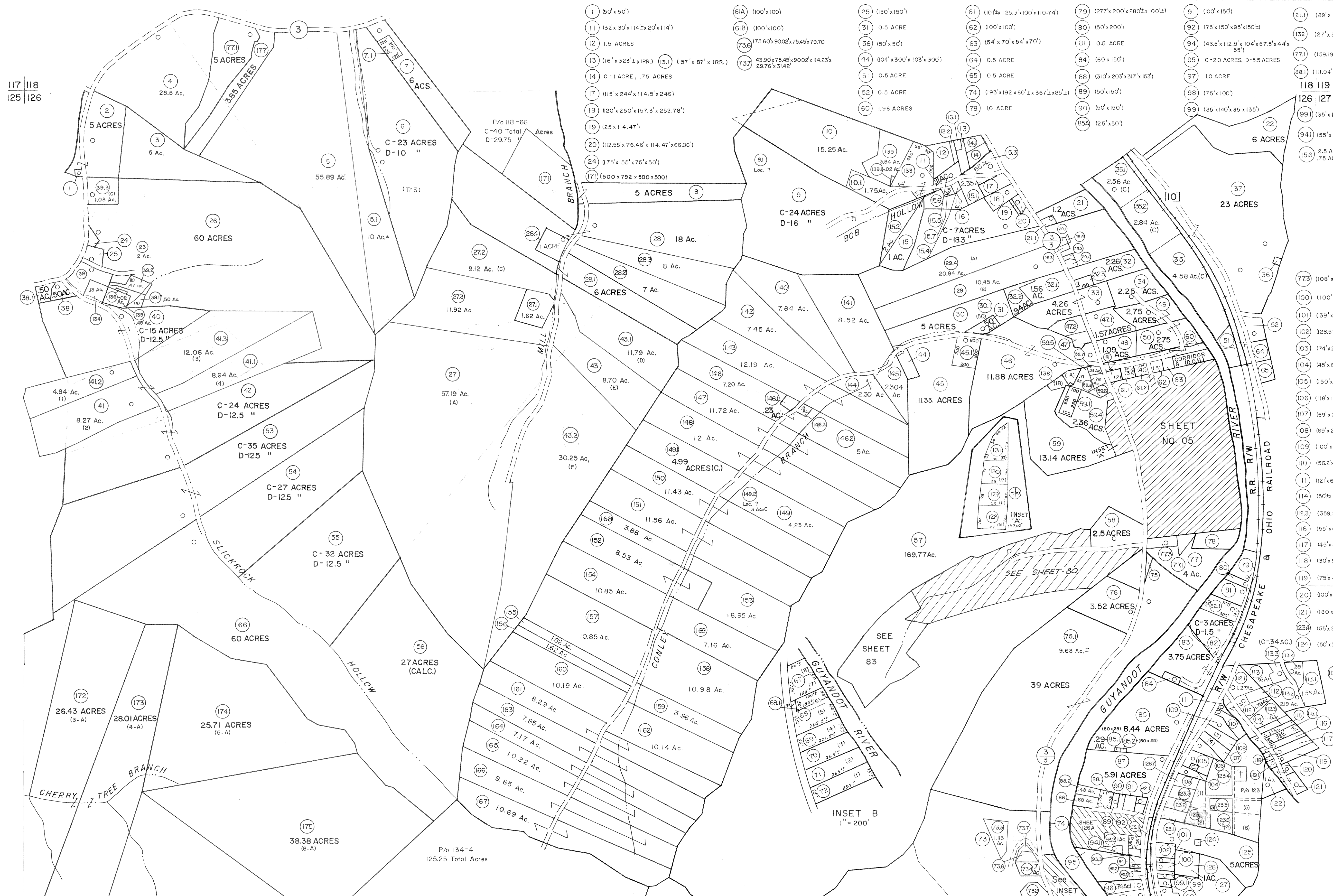


117 118
125 126

118 119
126 127

125 126
133 134

126 127
134 135



- 1 (50' x 50')
- 11 (32' x 30' x 114' x 20' x 114')
- 12 1.5 ACRES
- 13 (16' x 323' x IRR.) (13.1) (57' x 87' x IRR.)
- 14 C-1 ACRE, 1.75 ACRES
- 17 (115' x 244' x 114.5' x 246')
- 18 (20' x 250' x 157.3' x 252.78')
- 19 (25' x 114.47')
- 20 (112.55' x 76.46' x 114.47' x 66.06')
- 24 (175' x 155' x 75' x 50')
- 171 (500' x 792' x 500' x 500')
- 61A (100' x 100')
- 61B (100' x 100')
- 73.6 175.60' x 90.02' x 75.45' x 79.70'
- 73.7 43.90' x 75.45' x 90.02' x 114.23' x 29.76' x 31.42'
- 25 (150' x 150')
- 31 0.5 ACRE
- 36 (50' x 50')
- 44 (104' x 300' x 103' x 300')
- 51 0.5 ACRE
- 52 0.5 ACRE
- 60 1.96 ACRES
- 61 (107' x 125.3' x 100' x 110.74')
- 62 (100' x 100')
- 63 (54' x 70' x 54' x 70')
- 64 0.5 ACRE
- 65 0.5 ACRE
- 74 (193' x 192' x 60' x 367' x 85')
- 78 1.0 ACRE
- 79 (277' x 200' x 280' x 100')
- 80 (50' x 200')
- 81 0.5 ACRE
- 84 (60' x 200')
- 86 (310' x 203' x 317' x 153')
- 88 (50' x 150')
- 89 (50' x 150')
- 90 (50' x 150')
- 95A (25' x 50')
- 91 (100' x 150')
- 92 (75' x 150' x 95' x 150')
- 94 (43.5' x 112.5' x 104' x 57.5' x 44' x 56')
- 95 C-2.0 ACRES, D-5.5 ACRES
- 97 1.0 ACRE
- 98 (75' x 100')
- 99 (35' x 140' x 35' x 135')
- 21.1 (89' x 120' x 67' x 120')
- 92 (27' x 30' x 27' x 74' x 130')
- 94 (159.19' x 159.86' x 230.03')
- 88.1 (111.04' x 153' x 110.5' x 170.38')
- 99.1 (35' x 140' x 35' x 135')
- 94.1 (55' x 44' .25 ACRE
- 15.6 2.5 ACRES (A)
- .75 ACRES (C)
- 77.3 (108' x 159.82' x 6.54' x 71')
- 100 (100' x 70' x 150' x 70' x 140')
- 101 (39' x 150' x 36' x 150')
- 102 (128.57' x 158.42' x 133.12' x 149.6')
- 103 (74' x 223.5' x 41' x 236.95')
- 104 (45' x 62')
- 105 (150' x 190' x 160' x 223.5')
- 106 (118' x 130.3' x 172' x 280')
- 107 (69' x 294.5' x 108.2' x 172' x 130.3')
- 108 (69' x 291' x 101' x 294.5')
- 109 (100' x 80' x 81' x 156.8' x 26' x 291')
- 110 (56.2' x 206' x 53.1' x 85' x 74.5' x 156.8' x 81' x 89')
- 111 (121' x 68' x 50' x 138.7' x 206')
- 114 (50' x 200')
- 112.3 (359.25' x 114.2' x 148.63' x 190.73')
- 116 (55' x 400')
- 117 (45' x 400' x 75' x 360' x 30' x 40')
- 118 (30' x 50')
- 119 (75' x 405')
- 120 (100' x 140')
- 121 (180' x 140')
- 123A (55' x 203.37' x 51' x 101.68' x 62.8' x 204.67' x 199.7')
- 124 (50' x 50')
- 112.2 (88' x 346.7' x 135.26' x 88' x 135.26' x 34.67')

For Tax Purposes Only

Prepared by
MICHAEL BAKER, JR., INC.
Consulting Engineers
Rochester, Pennsylvania

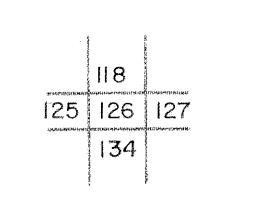
Legend

Property line	Original lot line	(15)
Edge of pavement or roadway	Dead lot number	(99)
Corporation line	Parcel or index number	o
District line	Improvement	
County line	Railroad	

Revisions

1	4-1-64	9	7-1-02 TO 7-1-04 L.S.S.	17
2	2-78	10		18
3	To 1-1-83 C.P.	11		19
4	To JULY 1, 1983 C.P.	12		20
5	Revised to 7-1-84	13		21
6	REV. TO 7-1-85	14		22
7	REV. TO 7-1-88	15		23
8	7-1-2000 JEB	16		24

KEY MAP



LOGAN COUNTY
STATE OF WEST VIRGINIA
Office of Assessor

DISTRICT
GUYAN
SHEET NO: 126
Date, Aerial Photography: November, 1962 Date, Map: April, 1963
Photo No: Scale: 1" = 400'