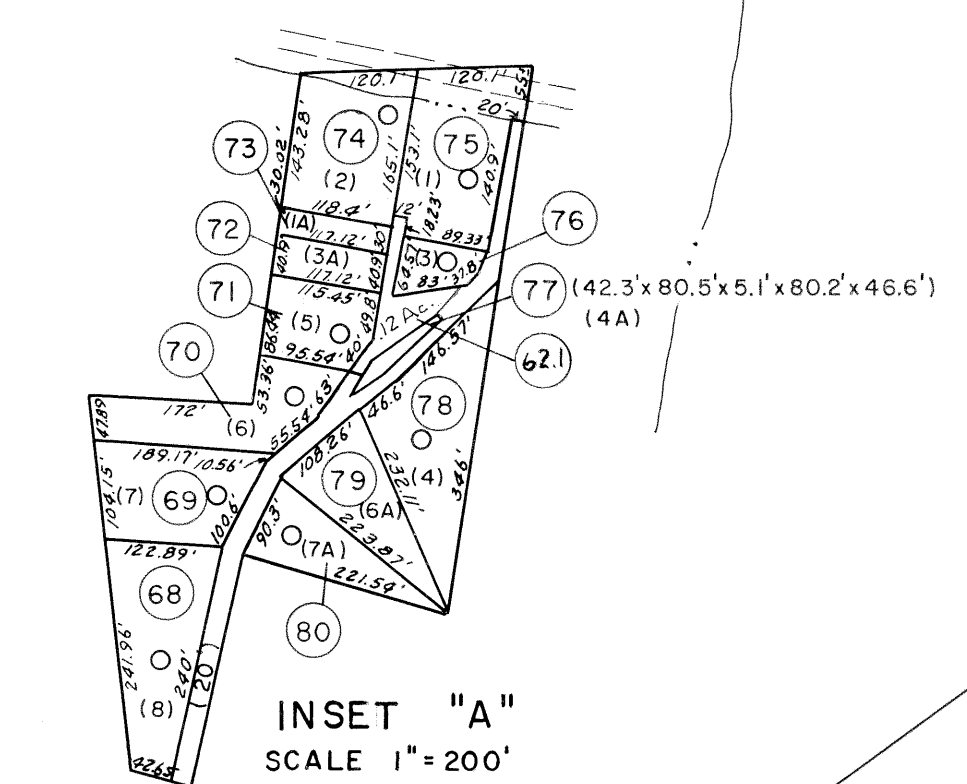


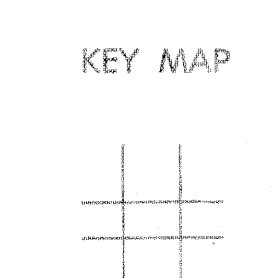
- 89 (104' x 134' x 158' x 131')
- 90 (158' x 246' x 234' x 167')
- 91 (100' x 154' x 159' x 139')
- 92 (120' x 157' x 100' x 157')
- 172 (195 x 80 x 195 x 40)
- 5.2 (84.05 x 38.17 x 245.42 x 125 x 243.60)
- 23.2 (163.26 x 152.63 x 175 x 250 x 240 x 75)
- 64.3 (88.91 x 428.07 x 44.92 x 117.6 x 64.32 x 65 x 188 x 198.2)
- 33.1 (130 x 45 x 130 x 45)
- 16.1 (125' x 275' x 125' x 275')
- 6.1 (74' x 20' x 130' x 79' x 105' x 25')
- 34 (176' x 101' x 175' x 90')
- 34.1 (144' x 90' x 145' x 82') .29 ACRE



For Tax Purposes Only
 Prepared by
MICHAEL BAKER, JR., INC.
 Consulting Engineers
 Rochester, Pennsylvania

Legend	
Property line	Original lot line
Edge of pavement or roadway	Deed lot number
Corporation line	Parcel or index number
District line	Improvement
County line	Railroad

Revisions	
1 4-1-64	9 7-1-2000 J.E.B.
2 2-78	10 7-1-02 TO 7-1-04 L.S.S.
3 To 1-1-83 C.P.	11
4 To July 1, 1983 C.P.	12
5 Revised to 7-1-84	13
6 REV. TO 7-1-86	14 NCS
7 REV. TO 7-1-88	15 NCS
8 8-1-97	16 J.E.B.



LOGAN COUNTY
 STATE OF WEST VIRGINIA
 Office of Assessor

DISTRICT
GUYAN
 SHEET NO: 127
 Date, Aerial Photography: November, 1962 Date, Map: April, 1963
 Photo No: Scale: 1" = 400'