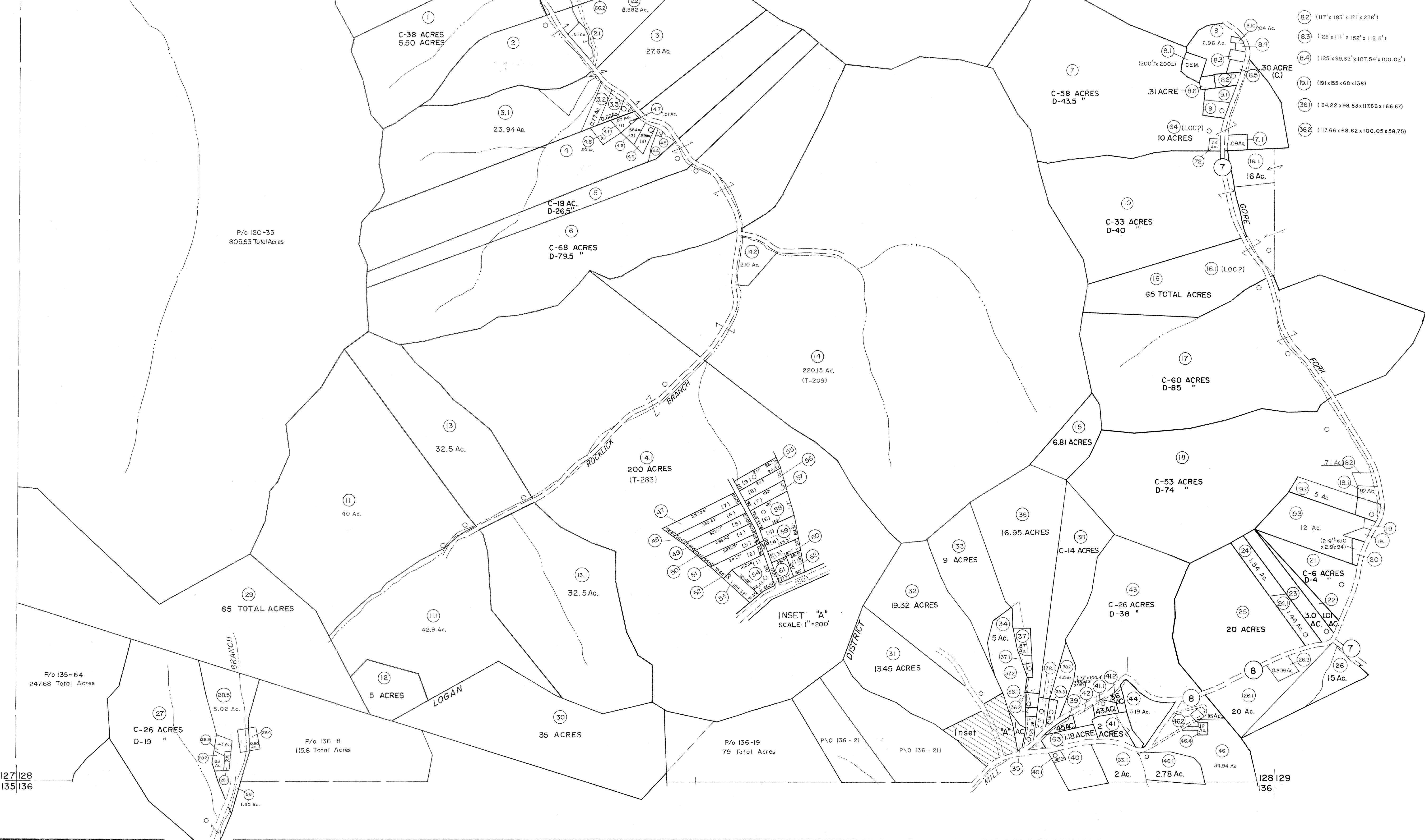


119|120  
127|128

120|121  
128|129



- 8.2 (117' x 183' x 121' x 236')
- 8.3 (125' x 111' x 152' x 112.5')
- 8.4 (125' x 99.62' x 107.54' x 100.02')
- 9.1 (91' x 55' x 60' x 138)
- 36.1 (84.22 x 98.83 x 117.66 x 166.67)
- 36.2 (117.66 x 68.62 x 100.05 x 58.75)

P/o 135-64  
24768 Total Acres

P/o 120-35  
805.63 Total Acres

P/o 136-8  
115.6 Total Acres

P/o 136-19  
79 Total Acres

127|128  
135|136

128|129  
136

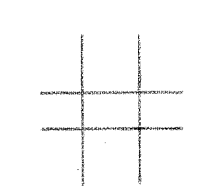
Legend

Property line	—	Original lot line	—
Edge of pavement or roadway	—	Deed lot number	(15)
Corporation line	—	Parcel or index number	(99)
District line	—	Improvement	○
County line	—	Railroad	—

Revisions

1	4-1-64	9	7-1-02 TO 7-1-04 L.S.	17
2	2-78	10		18
3	To 1-1-83 C.P.	11		19
4	To JULY 1, 1983 C.P.	12		20
5	Revised to 7-1-87	13		21
6	REV. TO 7-1-88	14		22
7	8-1-97	15		23
8	7-1-2000	16		24

KEY MAP



**LOGAN COUNTY**  
STATE OF WEST VIRGINIA  
Office of Assessor

DISTRICT

**GUYAN**

SHEET NO: 128

Date, Aerial Photography: November, 1962 Date, Map: April, 1963  
Photo No: Scale: 1" = 400'

For Tax Purposes Only

Prepared by  
**MICHAEL BAKER, JR., INC.**  
Consulting Engineers  
Rochester, Pennsylvania