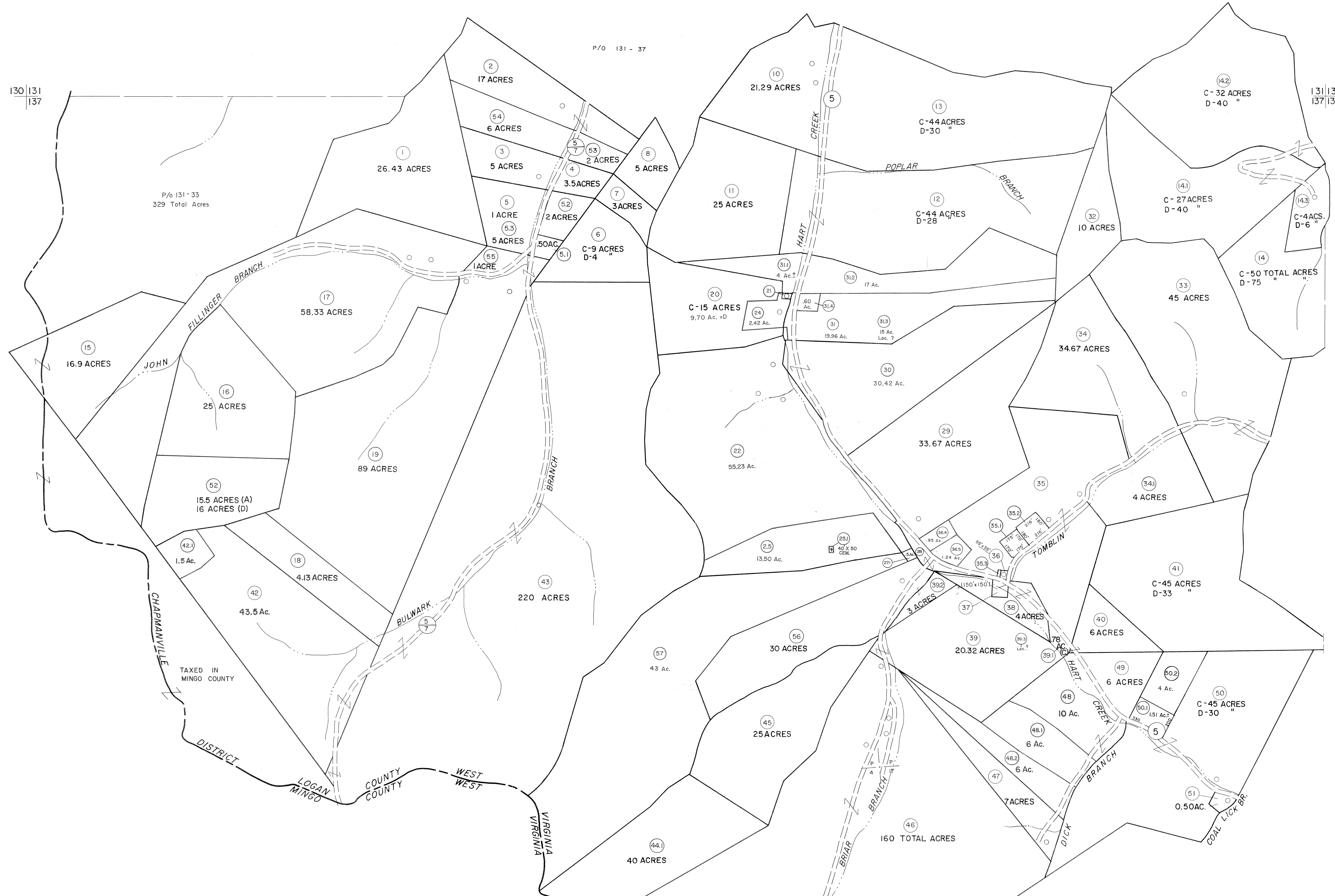


130 | 131  
137

131 | 132  
137 | 138

137  
142

137 | 138  
142 | 143



For Tax Purposes Only  
 Prepared by  
**MICHAEL BAKER, JR., INC.**  
 Consulting Engineers  
 Rochester, Pennsylvania

Legend	
Property line	Original lot line
Edge of pavement or roadway	Deed lot number
Corporation line	Parcel or index number
District line	Improvement
County line	Railroad

Revisions			
1	4-1-64	9	17
2	2-78	10	18
3	To 1-1-83 C.P.	11	19
4	REV. TO 7-1-86 NCS	12	20
5	REV. TO 7-1-88 NCS	13	21
6	8-1-97 J.E.B.	14	22
7	7-1-2000 J.E.B.	15	23
8	7-1-02 TO 7-1-04 L.S.S.	16	24

KEY MAP

**LOGAN COUNTY**  
 STATE OF WEST VIRGINIA  
 Office of Assessor

DISTRICT  
**GUYAN**  
 SHEET NO: 137  
 Date, Aerial Photography: November, 1962 Date, Map: April, 1963  
 Photo No: Scale: 1" = 400'