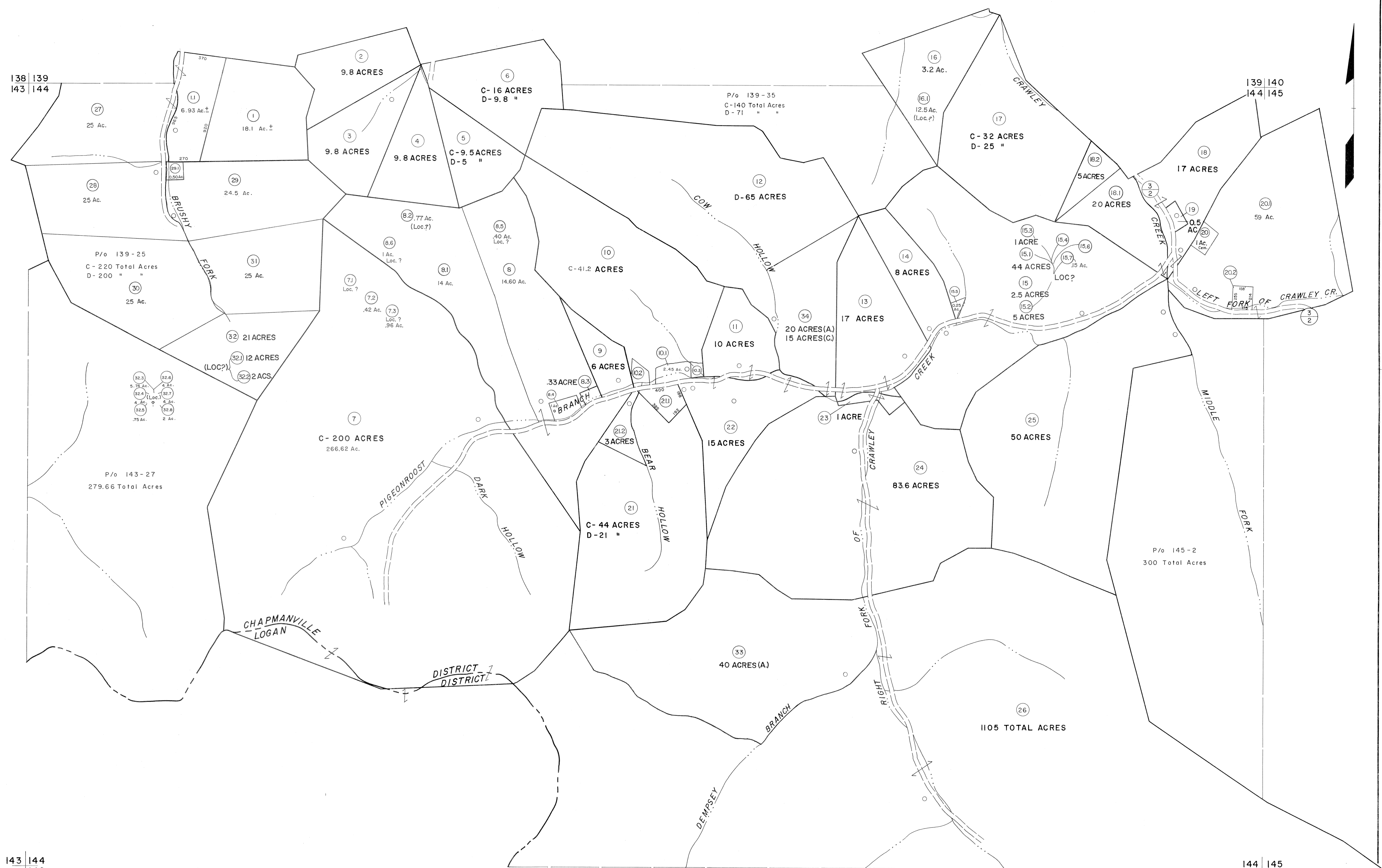


138 | 139
143 | 144

139 | 140
144 | 145

143 | 144
146 | 147

144 | 145
146 | 147



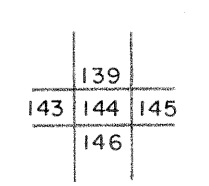
For Tax Purposes Only

Prepared by
MICHAEL BAKER, JR., INC.
Consulting Engineers
Rochester, Pennsylvania

Legend	
Property line	Original lot line
Edge of pavement or roadway	Deed lot number
Corporation line	Parcel or index number
District line	Improvement
County line	Railroad

Revisions			
1	4-1-64	9	7-1-02 TO 7-1-04 L.S.S.
2	2-78	10	
3	Amended 1983 P.W.	11	
4	To 7-1-83 C.P.	12	
5	Revised to 7-1-84	13	
6	REV. TO 7-1-86 NCS	14	
7	REV. TO 7-1-88 NCS	15	
8	8-1-97 J.E.B.	16	

KEY MAP



LOGAN COUNTY

STATE OF WEST VIRGINIA

Office of Assessor

DISTRICT
GUYAN

SHEET NO: 144

Date, Aerial Photography: November, 1962 Date, Map: April, 1963
Photo No: Scale: 1" = 400'