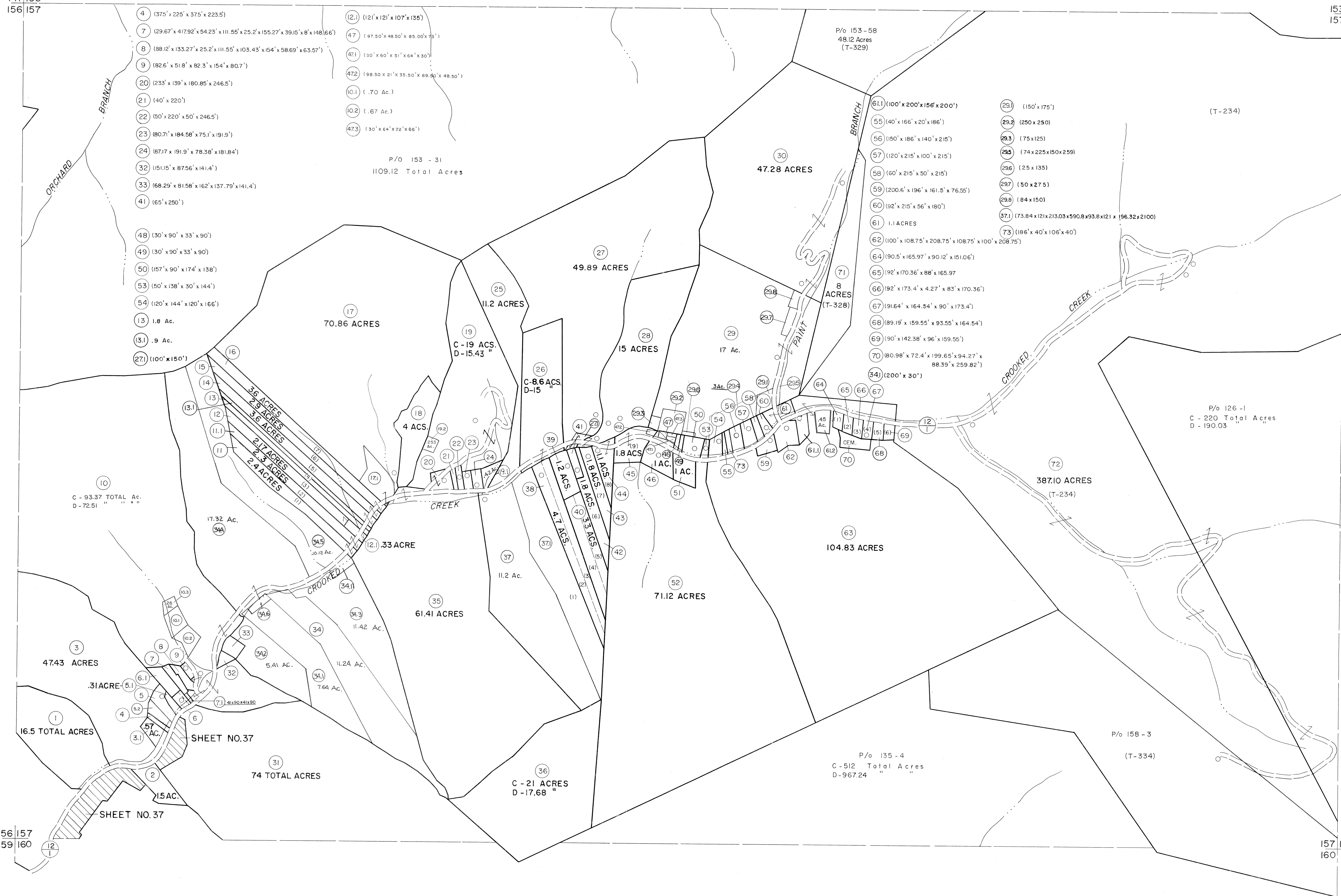


141 153
156 157

153 154
157 158



For Tax Purposes Only

Prepared by
MICHAEL BAKER, JR., INC.
Consulting Engineers
Rochester, Pennsylvania

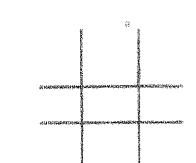
Legend

Property line	—————	Original lot line	-----
Edge of pavement or roadway	-----	Deed lot number	(15)
Corporation line	-----	Parcel or index number	(99)
District line	-----	Improvement	o
County line	-----	Railroad	+

Revisions

1	4-1-64	9	17
2	January 1963	10	18
3	REV. TO 7-1-83 NCS	11	19
4	REV. TO 7-1-84 NCS	12	20
5	REV. TO 7-1-88 NCS	13	21
6	9-1-97 J.E.B	14	22
7	7-1-02 TO 7-1-04 L.S.S.	15	23
8		16	24

KEY MAP



LOGAN COUNTY
STATE OF WEST VIRGINIA
Office of Assessor

DISTRICT

GUYAN

SHEET NO: 157

Date, Aerial Photography: November, 1962 Date, Map: April, 1963
Photo No: Scale: 1" = 400'