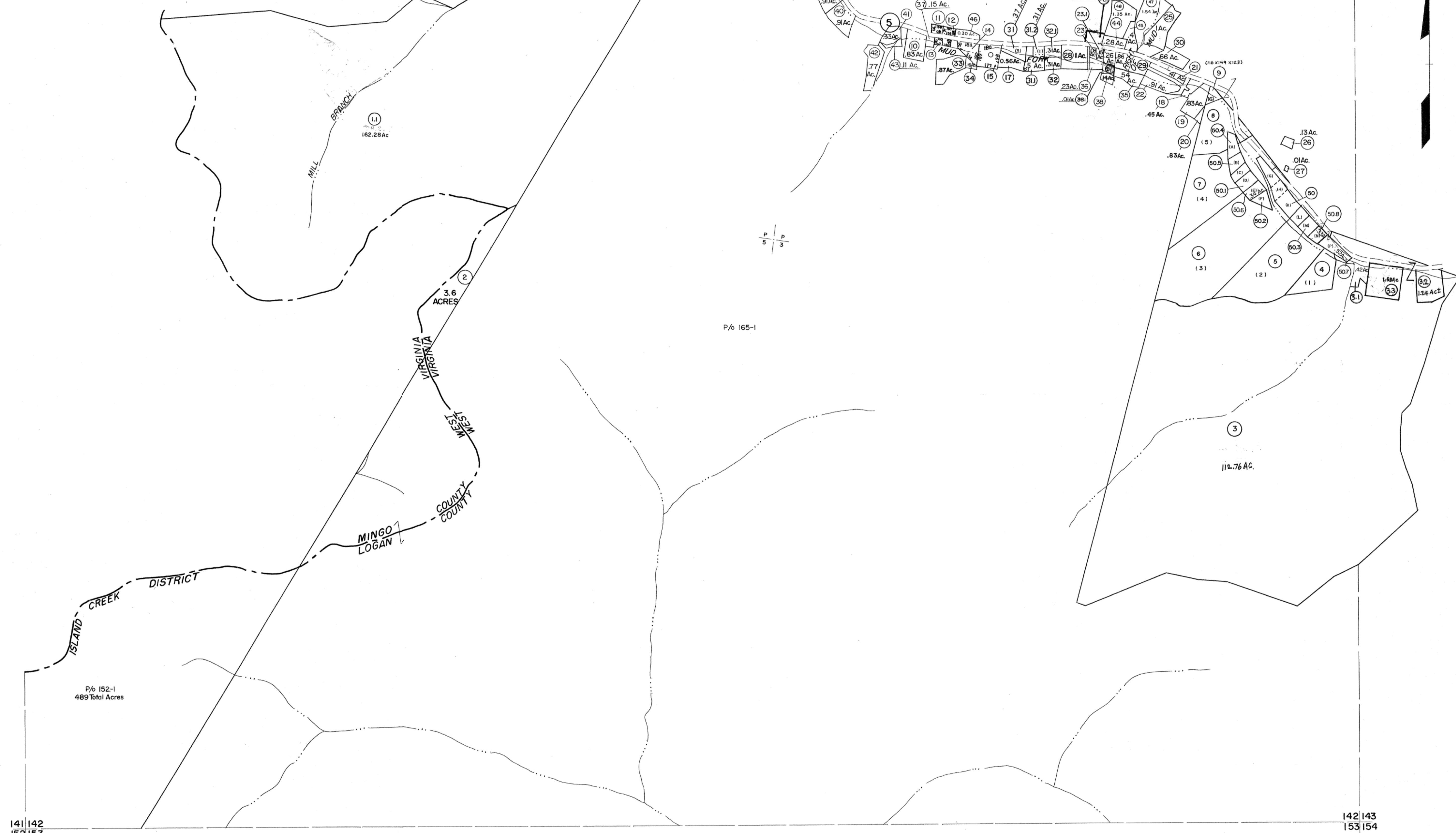


131  
141 142

13 132  
142 143

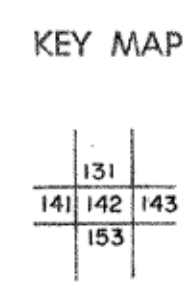
- 20 (57.96 x 120.9 x 89.76)
- 23 (123.8 x 112.69 x 119.46 x 80.74)
- 24 (37.82 x 57.51 x 135.74 x 95.2 x 112.69)



For Tax Purposes Only  
 Prepared by  
**MICHAEL BAKER, JR., INC.**  
 Consulting Engineers  
 Rochester, Pennsylvania

| Legend                      |           |
|-----------------------------|-----------|
| Property line               | —————     |
| Edge of pavement or roadway | - - - - - |
| Corporation line            | · · · · · |
| District line               | - - - - - |
| County line                 | —————     |
| Original lot line           | —————     |
| Deed lot number             | (15)      |
| Parcel or index number      | (22)      |
| Improvement                 | o         |
| Railroad                    | —————     |

| Revisions |                   |    |       |
|-----------|-------------------|----|-------|
| 1         | 4-1-64            | 9  | 11-16 |
| 2         | Revised to 7-1-86 | 10 |       |
| 3         | To 7-1-86 C.P.    | 11 |       |
| 4         | 7-1-89            | 12 |       |
| 5         | 9-1-97            | 13 |       |
| 6         | 7-1-2000          | 14 |       |
| 7         | 4-15-08           | 15 |       |
| 8         | 2/21/10           | 16 |       |



**LOGAN COUNTY**  
 STATE OF WEST VIRGINIA  
 Office of Assessor

DISTRICT  
**ISLAND CREEK**  
 SHEET NO: 142  
 Date, Aerial Photography: November, 1962 Date, Map: April, 1963  
 Photo No: Scale: 1" = 400'