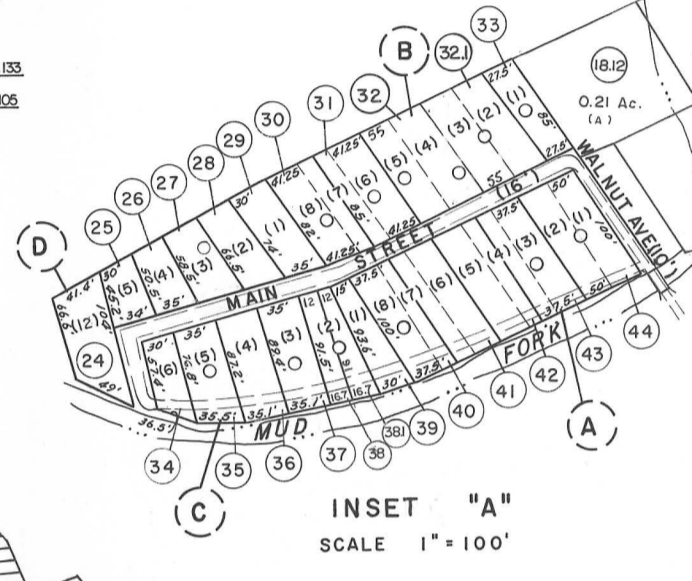
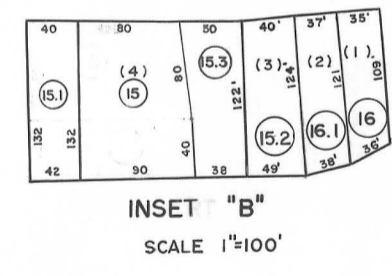


- 3 (150' x 200')
- 4 (55' x 95' x 40' x 80')
- 5 (15' x 130' x 32' x 130')
- 6 (72' x 133' x 55' x 130')
- 7 (19' x 133')
- 8 (73' x 116' x 79' x 116')
- 13 (200' x 160' x 97' x 160')
- 14 (67' x 160')
- 15 (165' x 100' x 60' x 50' x 105' x 150')
- 16 (122.7' x 137' x 65' x 150')
- 17 (205' x 105')
- 19 (80' x 60' x 80' x 22')



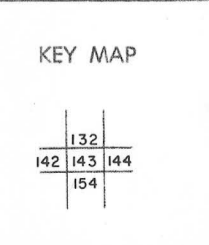
For Tax Purposes Only  
Prepared by  
MICHAEL BAKER, JR., INC.  
Consulting Engineers  
Rochester, Pennsylvania

**Legend**

Property line	—	Original lot line	—
Edge of pavement or roadway	—	Deed lot number	(15)
Corporation line	—	Parcel or index number	(99)
District line	—	Improvement	o
County line	—	Railroad	—

**Revisions**

1	4-1-64		9	7-1-2000	J.E.B.	17
2	2-3-78	KJG	10	11-6-08		18
3	Revision 16 7-1-88		11	7-11-11		19
4	July 1984	TRC	12	11-7-12		20
5	7-1-86	C.P.	13			21
6	7-1-88	TRL	14			22
7	OGIS 5-7-91	TL	15			23
8	9-1-97	J.E.B.	16			24



**LOGAN COUNTY**  
STATE OF WEST VIRGINIA  
Office of Assessor

DISTRICT  
**ISLAND CREEK**  
SHEET NO: 143  
Date, Aerial Photography: November, 1962 Date, Map: April, 1963  
Photo No: Scale: 1"=400'