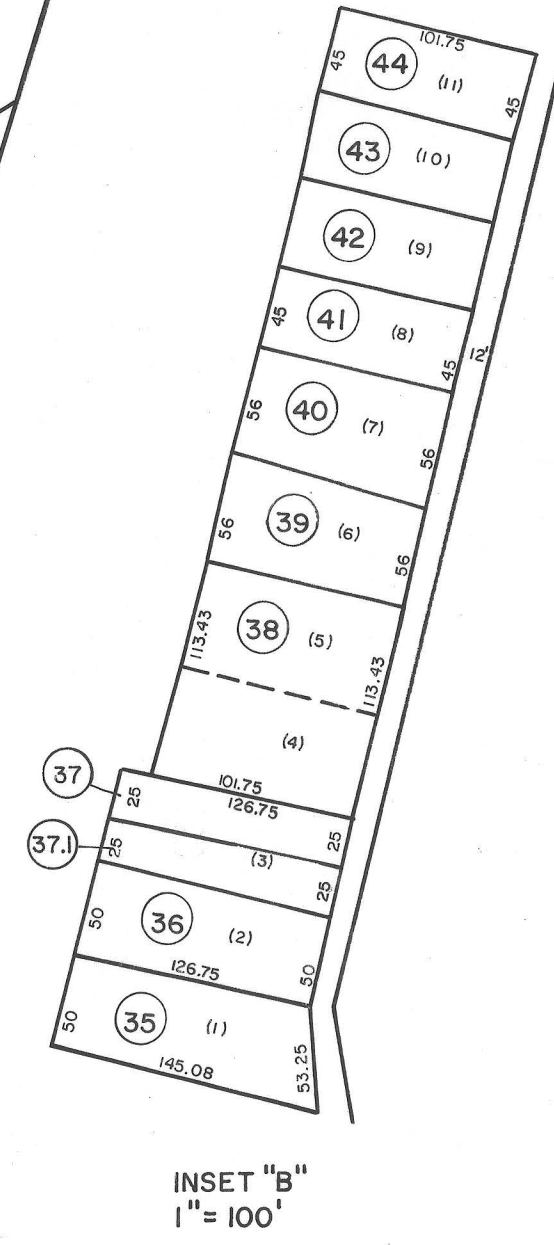


- (32) (62x150x90x150)
- (45) (75x100.46)
- (46) (30.90x22.99x63.98x122.44x109.04x100.46)
- (47) (56.82x34.07x127.77x62.20x122.44)
- (48) (84.70x24.11x132.89x59.09x127.77)
- (49) (72x132.89)
- (50) (78x61.43x86.85x119.54x132.89)
- (51) (40x120.11x65.06x26.16x20.80x130x86.85)

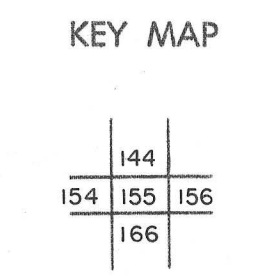


For Tax Purposes Only

Prepared by  
**MICHAEL BAKER, JR., INC.**  
*Consulting Engineers*  
 Rochester, Pennsylvania

Legend	
Property line	———
Edge of pavement or roadway	———
Corporation line	———
District line	———
County line	———
Original lot line	-----
Dead lot number	(15)
Parcel or index number	(99)
Improvement	o
Railroad	———

Revisions	
1	4-1-64
2	2-3-78 KG
3	Revised to 7-1-83
4	July, 1986 TRL
5	7-1-88 TRL
6	0615 5-10-91 TL
7	9-1-97 J.E.B.
8	
9	9/2/07 S&H
10	7-14-11 HES
11	2-23-13 HES
12	
13	
14	
15	
16	
17	
18	
19	
20	
21	
22	
23	
24	



**LOGAN COUNTY**  
 STATE OF WEST VIRGINIA  
 Office of Assessor

DISTRICT  
**ISLAND CREEK**  
 SHEET NO: 155  
 Date, Aerial Photography: November, 1962 Date, Map: April, 1963  
 Photo No. \_\_\_\_\_ Scale: 1" = 400'