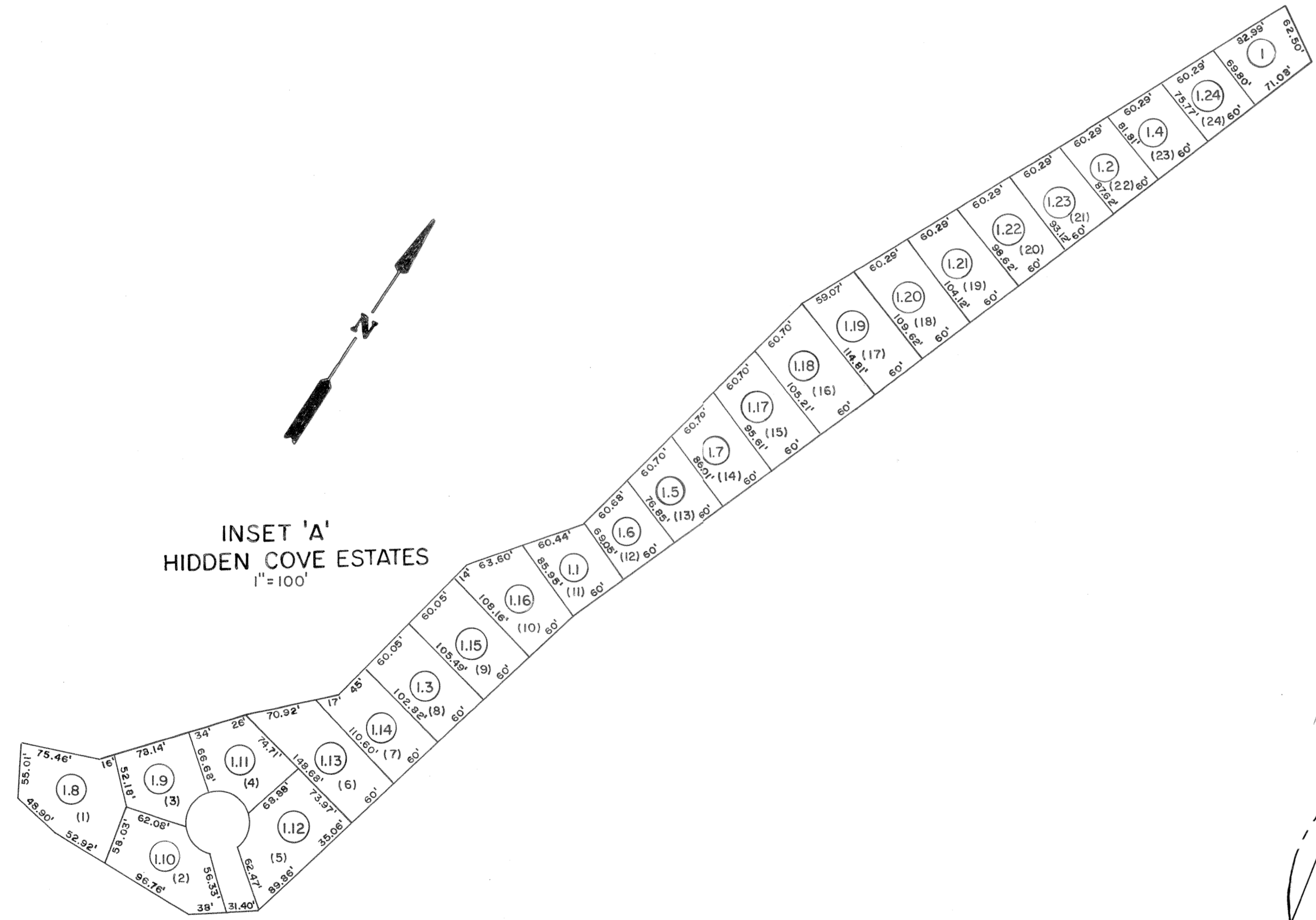


163 164  
175

164 165  
175 176

175 185

175 176  
185 186



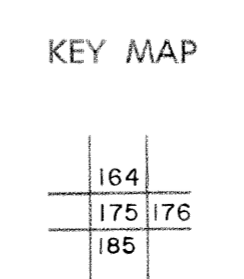
**For Tax Purposes Only**  
Prepared by  
**MICHAEL BAKER, JR., INC.**  
Consulting Engineers  
Rochester, Pennsylvania

**Legend**

Property line	—	Original lot line	- - - - -
Edge of pavement or roadway	—	Deed lot number	(15)
Corporation line	—	Parcel or index number	(2)
District line	—	Improvement	o
County line	—	Railroad	+

**Revisions**

1	4-1-64	9	17
2	Revised to 7-1-83	10	18
3	7-1-88	11	19
4	9-1-97	12	20
5	7-1-2000	13	21
6	8/25/07	14	22
7		15	23
8		16	24



**LOGAN COUNTY**  
STATE OF WEST VIRGINIA  
Office of Assessor

DISTRICT  
**ISLAND CREEK**  
SHEET NO: 175  
Date, Aerial Photography: November, 1962 Date, Map: April, 1963  
Photo No: Scale: 1" = 400'