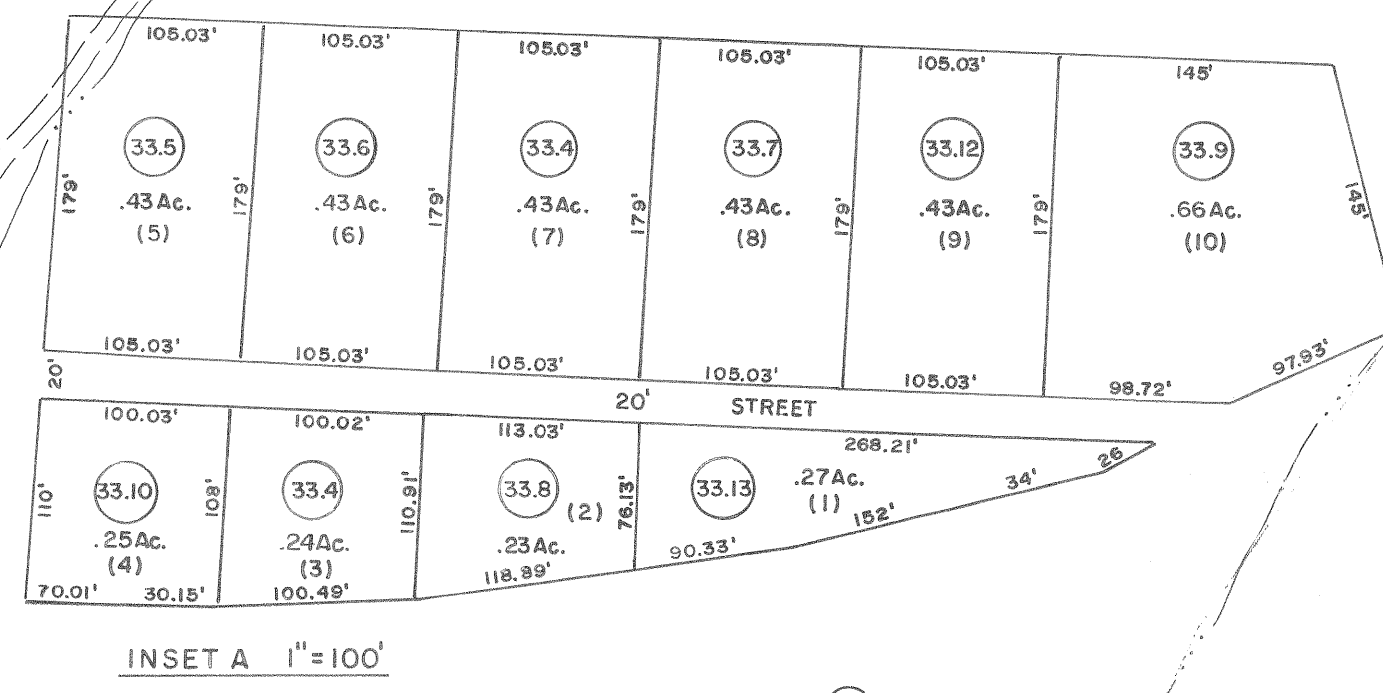


141 | 142  
152 | 153

142 | 143  
153 | 154



152 | 153  
163 | 164

153 | 154  
164 | 165

**For Tax Purposes Only**

Prepared by  
**MICHAEL BAKER, JR., INC.**  
Consulting Engineers  
Rochester, Pennsylvania

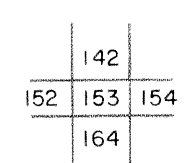
**Legend**

Property line	———	Original lot line	-----
Edge of pavement or roadway	———	Deed lot number	(15)
Corporation line	-----	Parcel or index number	○
District line	-----	Improvement	○
County line	-----	Railroad	—+—

**Revisions**

No.	Description	Date	By	Check
1	4-1-64	8/31/07	S.B.H.	17
2	2-3-78			18
3	Revised to 7-1-86			19
4	To 7-1-86 C.P.			20
5	7-1-88		TRL	21
6	OGIS 5-10-91		TL	22
7	9-1-97		J.E.B	23
8	7-1-2000		J.E.B	24

**KEY MAP**



**LOGAN COUNTY**  
STATE OF WEST VIRGINIA  
Office of Assessor

**DISTRICT**

**ISLAND CREEK**

**SHEET NO: 153**

Date, Aerial Photography: November, 1962 Date, Map: April, 1963  
Photo No: Scale: 1" = 400'