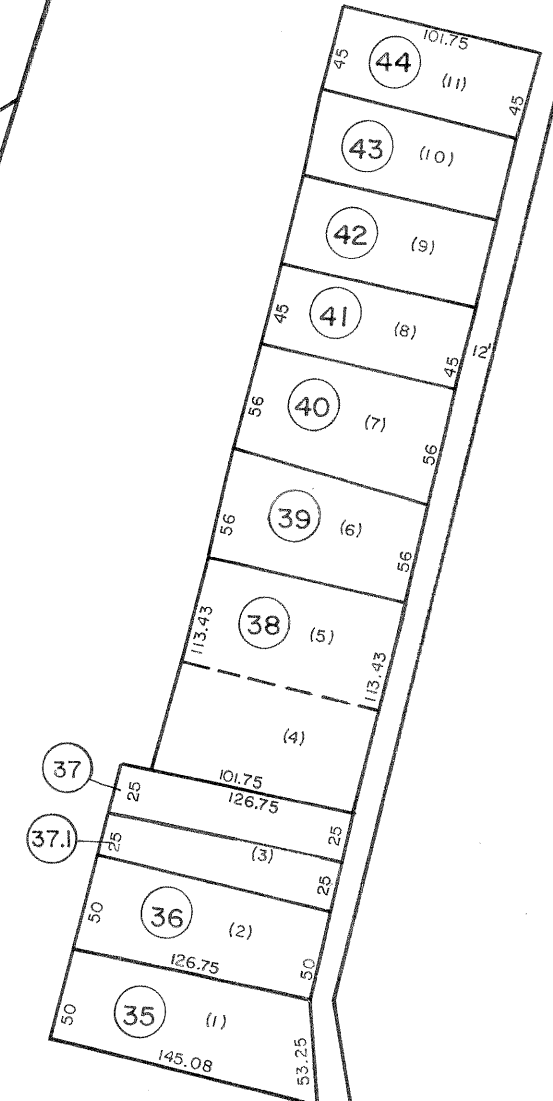




- (32) (82x150x90x150)
- (45) (75x100.46)
- (46) (30.90x2249x6398x122.44x109.04x100.46)
- (47) (56.82x34.07x127.77x62.20x122.44)
- (48) (54.70x24.11x132.89x59.09x127.77)
- (49) (72x132.89)
- (50) (78x61.43x86.85x119.54x132.89)
- (51) (40x120.11x65.06x26.16x200.80x130x86.85)



INSET "B"
1" = 100'

For Tax Purposes Only
Prepared by
MICHAEL BAKER, JR., INC.
Consulting Engineers
Rochester, Pennsylvania

Legend	
Property line	—
Edge of pavement or roadway	—
Corporation line	—
District line	—
County line	—
Original lot line	- - - -
Deed lot number	(15)
Parcel or index number	(2)
Improvement	o
Railroad	—+—

Revisions	
1	4-1-64
2	2-3-78 KG
3	Revised to 7-1-83
4	July, 1986 TRL
5	7-1-88 TRL
6	OGIS 5-10-91 TL
7	9-1-97 J.E.B
8	7-1-2000 J.E.B
9	9/2/07
10	S & H
11	
12	
13	
14	
15	
16	

KEY MAP

144
154 155 156
166

LOGAN COUNTY
STATE OF WEST VIRGINIA
Office of Assessor

DISTRICT
ISLAND CREEK
SHEET NO: 155
Date, Aerial Photography: November, 1962 Date, Map: April, 1963
Photo No: Scale: 1" = 400'