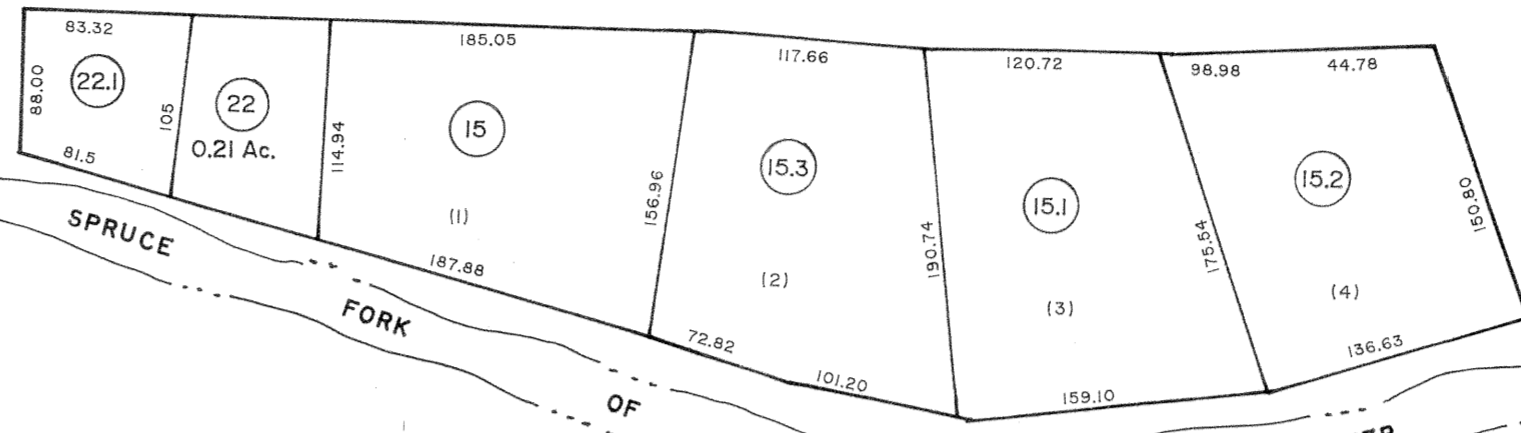


138 139  
149 150

139 140  
150 151

149 150  
160 161

150 151  
161 162



- (1.13) (180' x 131' x 243' x 99' x 197' x 262' x 89') .14 AC.
- (1.12) (30' x 99' x 243' x 131' x 180')
- (2A) (50' x 125' x 50' x 140')
- (2) (178' x 246' x 125' x 88')
- (3) (112' x 125' x 112' x 158')
- (4) 1.45 ACRES
- (5) (50.5' x 115.5' x 53.28' x 115.07')
- (6) (50.5' x 115.07' x 53.24' x 115.15')
- (7) (106.52' x 115' x 101.2' x 132.24')
- (8) (59.44' x 132.24' x 65.5' x 145.57')
- (9) (50.5' x 115.15' x 53.24' x 115.31')
- (10) (50.5' x 115.31' x 53.24' x 115.52')
- (11) (53.24' x 145.57' x 65.5' x 159.48')
- (12) (107' x 275' x 98' x 275')
- (14) (155' x 152' x 104' x 120')

- (16) 7 ACRES (1)
- (17) 3.89 ACS (2)
- (18) 1.31 AC (3)
- (19) 1.87 ACRE (4)
- (20) 3.23 ACS (5)
- (21) 2.79 Ac. (6)

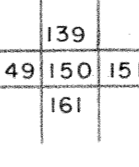
Legend

Property line	—	Original lot line	—
Edge of pavement or roadway	---	Deed lot number	(15)
Corporation line	----	Parcel or index number	(16)
District line	-----	Improvement	o
County line	-----	Railroad	+

Revisions

1	4-1-64	9	6-2-2003 JEB	17
2	2-2-78 BAH	10	11-6-88 HKS	18
3	TO JULY 1981 C.P.	11		19
4	7-1-86 C.P.	12		20
5	REV. TO 7-1-88 NCS	13		21
6	8-1-97 J.E.B	14		22
7	7-1-2000 JEB	15		23
8		16		24

KEY MAP



**LOGAN COUNTY**  
STATE OF WEST VIRGINIA  
Office of Assessor

DISTRICT

LOGAN

SHEET NO: 150

Date, Aerial Photography: November, 1962 Date, Map: April, 1963  
Photo No: Scale: 1" = 400'

For Tax Purposes Only  
Prepared by  
MICHAEL BAKER, JR., INC.  
Consulting Engineers  
Rochester, Pennsylvania