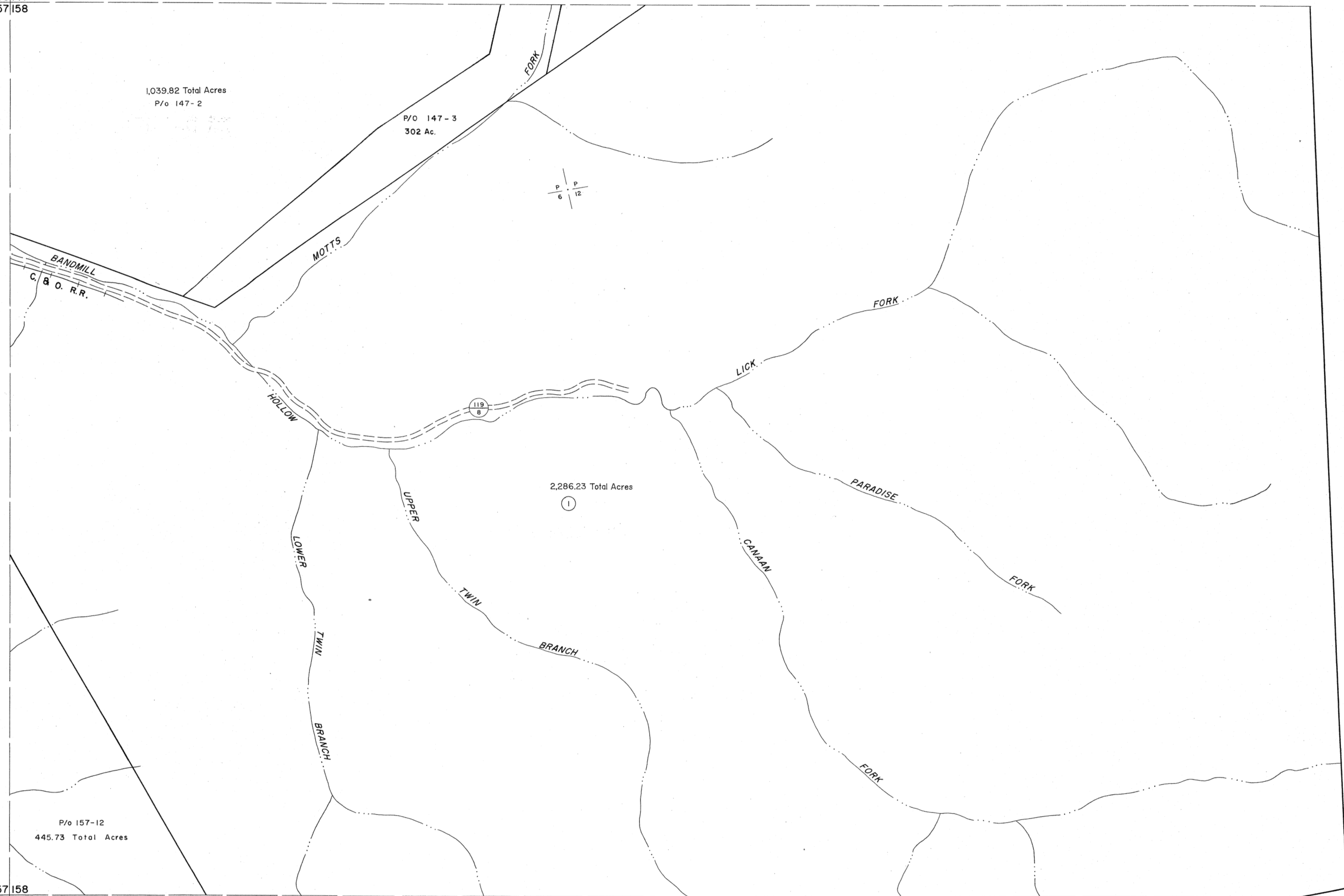


146|147
157|158

147|148
158|159



157|158
168|169

158|159
169|170

For Tax Purposes Only

Prepared by
MICHAEL BAKER, JR., INC.
Consulting Engineers
Rochester, Pennsylvania

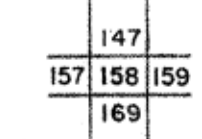
Legend

Property line	—	Original lot line	—
Edge of pavement or roadway	—	Deed lot number	(15)
Corporation line	—	Parcel or index number	⊙
District line	—	Improvement	o
County line	—	Railroad	—

Revisions

1	4-1-64	9	17
2	To JULY 1981 C.P.	10	18
3	11-16	11	19
4		12	20
5		13	21
6		14	22
7		15	23
8		16	24

KEY MAP



LOGAN COUNTY
STATE OF WEST VIRGINIA
Office of Assessor

DISTRICT

LOGAN

SHEET NO: 158

Date, Aerial Photography: Nov., 1962 Date, Map: Apr., 1963
Photo No: Scale: 1" = 400'